



Importing Projects

Reference Number: **KB-03213**

Last Modified: **August 13, 2025**

QUESTION

I am using X17 or Home Designer 2026, and I need to import a project or asset someone sent to me. What is the best way to accomplish this?

ANSWER

In X17 and Home Designer 2026, projects and assets can easily be imported into your Chief Architect/Home Designer program using the Import functions available within the program. Additionally, files can be imported directly into existing projects using the Project Browser.



Reasons you might perform an import of these files:

- Copying/transferring files from a different computer
- Receiving file(s) from a client or colleague
- Adding files to an existing project


Note: Information on exporting projects can be found in the "Exporting Projects and Disconnected Files" resource in the [Related Articles](#) section below.

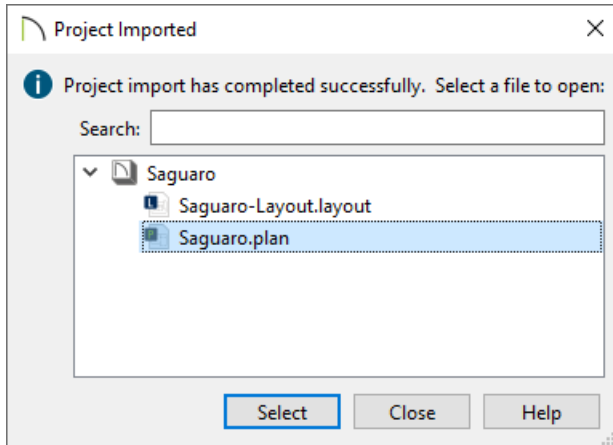
Assets are external files that are referenced by plan and layout files. Some examples include images, PDFs, material textures and maps, and backdrops.

Importing projects

1. Navigate to **File> Import Project**  when the Dashboard is active or **File> Import> Import Project**  if an existing file is active.
2. In the dialog that appears, select a .caproj file, then click **Open**.


3. If you're using Project Management, the **Project Imported** dialog will open and state "Project import has completed successfully. Select a file to open:". You can choose to either open one of the files within the project or click **Close** at this time.

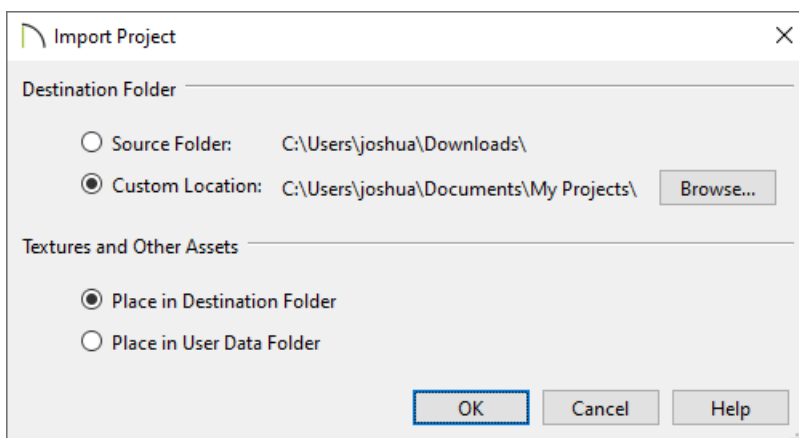
All plan and layout files associated with the imported project will be listed in the **Project Browser** , while any assets will be listed in the Asset Management dialog.




Although all referenced assets are included in a project, individual assets can be imported independently into the program, if you so wish. Navigate to Tools> Asset Management, then click "Import New".

If you're using Traditional File Management, you will instead be prompted with an **Import Project** dialog, allowing you to choose the **Destination Folder** for the extracted project, and where you would like **Textures and Other Assets** to be placed. Once these settings have been specified, click **OK**.

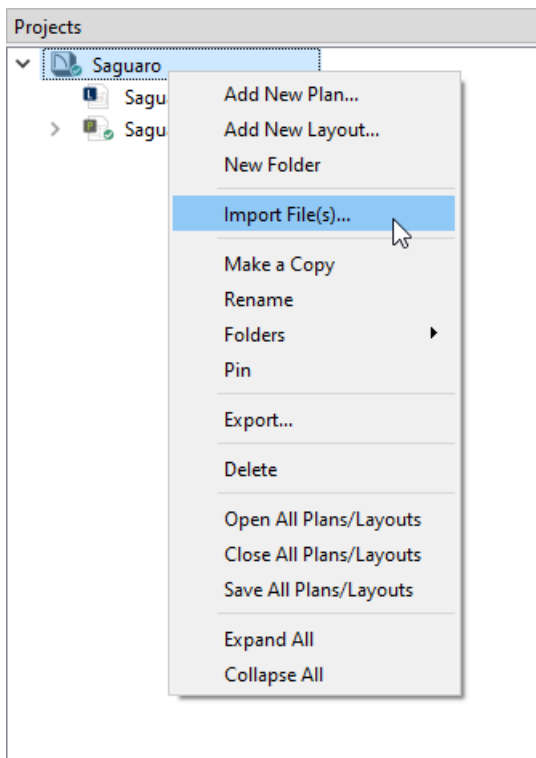
All plan and layout files associated with the project will open immediately in the program, and they will be listed in the **Project Browser** .



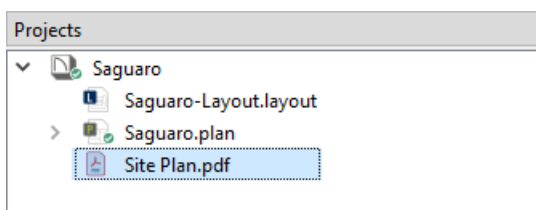
Importing files into existing projects (Project Management only)

1. You can import a variety of different files directly into a project using the **Project Browser** ; right-click on a project and select **Import File(s)**.

Note: On a Mac, hold down the Control key while clicking to initiate a right-click command. More information about right-click commands on Apple input devices can be found in the following Apple resource: [Right-click on Mac \(https://support.apple.com/guide/mac-help/right-click-mh35853/mac\)](https://support.apple.com/guide/mac-help/right-click-mh35853/mac).



2. In the dialog that appears, select the file that you want to import, such as a .plan, .layout, image, .pdf, etc., then click **Open**. The file will now be listed as its own line item within the project.



A Common Documents area is also available within the Project Browser when using Project Management.

Files that you might want to use across multiple projects can be added to the Common Documents; however, it's important to be aware that when a file located here is updated, it will also be updated in every file or project that references it.

📄 [Backing Up and Restoring Chief Architect Content Using Project Management \(/support/article/KB-03211/backing-up-and-restoring-chief-architect-content-using-project-management.html\)](/support/article/KB-03211/backing-up-and-restoring-chief-architect-content-using-project-management.html)

📄 [Enabling or Disabling Project Management \(/support/article/KB-03210/enabling-or-disabling-project-management.html\)](/support/article/KB-03210/enabling-or-disabling-project-management.html)

📄 [Exporting Projects and Disconnected Files \(/support/article/KB-03212/exporting-projects-and-disconnected-files.html\)](/support/article/KB-03212/exporting-projects-and-disconnected-files.html)