

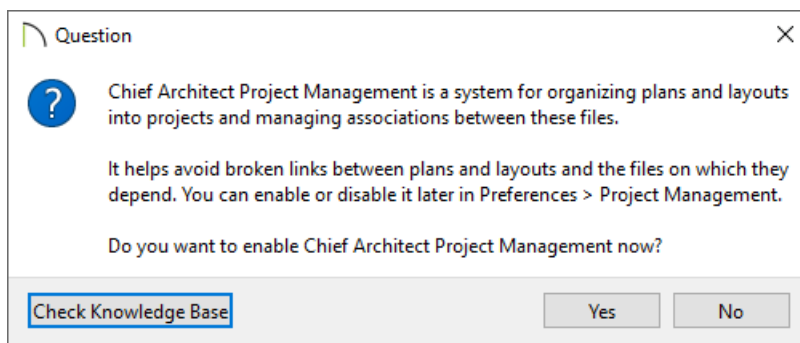
Enabling or Disabling Project Management

Reference Number: **KB-03210**

Last Modified: **August 12, 2025**

QUESTION

I receive the following question when opening X17 or Home Designer 2026 for the first time:



Should I enable this feature?

OR

How do I enable or disable Project Management, or switch back and forth between the two at any time?

ANSWER

Project Management is a feature introduced in Chief Architect X17 and Home Designer 2026, and it offers a number of advantages, including:

- Protecting links between plans, layouts, and assets such as materials and PDFs
- Backing up your Chief Architect/Home Designer projects and user settings to local disk
- Accessing and managing of all files directly within Chief Architect/Home Designer

In order to perform these tasks, Chief Architect/Home Designer saves all of your projects (plans and layouts), user catalog, user settings (toolbars, hotkeys, preferences, etc.) into a hidden location on your computer's file system and assigns each file a unique hashed name. By doing this, these files are not easily accessible outside of the Chief Architect/Home Designer program, unless they are exported. Instead, all of your files are accessed and managed directly within the program using the Project Browser and Asset Management dialog. To learn more about Project Management, please see the [Related Articles](#) section, along with your program's documentation.

If you are prompted with the question at the beginning of this article, click **Yes** to enable this functionality, or **No**

to continue using Traditional File Management.



Project Management can be enabled or disabled at any time by accessing your Preferences.

With Project Management enabled, it's important that you do NOT change or redirect the program's Managed Resources onto a cloud/network or synced location, as this will likely lead to file corruption and/or data loss.

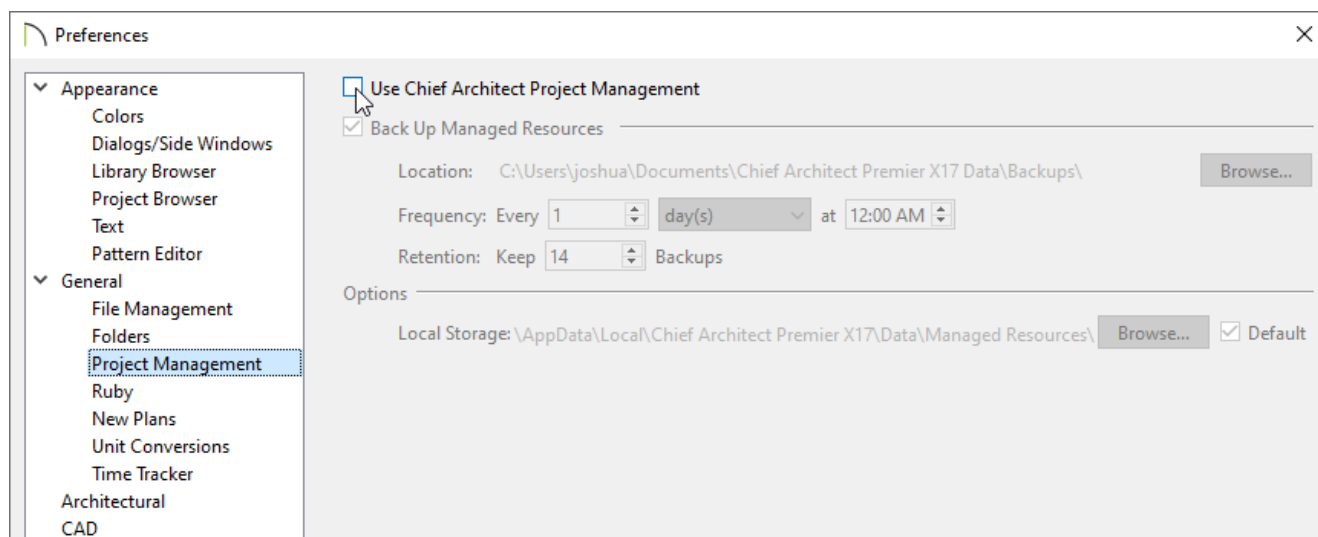
Chief Architect, Inc will be unable to provide support or assistance if you have redirected the Managed Resources to a location that is being synced or not local to the system.

Consider using Traditional File Management if you want to store Chief Architect/Home Designer specific files on a cloud/network.

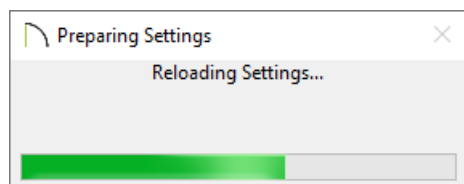
To enable or disable Project Management

1. Select **Edit> Preferences**  if you're on a Windows computer or **Chief Architect/Home Designer> Preferences**  if you're on a Mac.
2. On the **PROJECT MANAGEMENT** panel of the **Preferences** dialog, check or uncheck the **Use Chief Architect Project Management** box, then click **OK**.

In order to change between Project Management and Traditional File Management, all plan and layout files must be closed.



3. A **Preparing Settings** dialog will appear. Once this dialog disappears, you can begin working.



If you are switching from Project Management to Traditional File Management, you may also receive a **Question** dialog asking "Would you like to back up managed resources?" Click **Yes** or **No** to proceed.

Note: A backup of your Managed Resources saves all of your projects (plans and layouts), user catalog, user settings (toolbars, hotkeys, preferences, etc), and assets into a compressed (zipped) folder located within the Chief Architect/Home Designer Data folder. To learn more, see the [Related Articles](#) section below.

Related Articles

- 📁 [Backing Up and Restoring Chief Architect Content Using Project Management \(/support/article/KB-03211/backing-up-and-restoring-chief-architect-content-using-project-management.html\)](/support/article/KB-03211/backing-up-and-restoring-chief-architect-content-using-project-management.html)
- 📁 [Exporting Projects and Disconnected Files \(/support/article/KB-03212/exporting-projects-and-disconnected-files.html\)](/support/article/KB-03212/exporting-projects-and-disconnected-files.html)
- 📁 [Importing Projects \(/support/article/KB-03213/importing-projects.html\)](/support/article/KB-03213/importing-projects.html)
- 📁 [Sharing Projects in a Work Environment that is Utilizing Cloud/Network Services \(/support/article/KB-03155/sharing-projects-in-a-work-environment-that-is-utilizing-cloud-network-services.html\)](/support/article/KB-03155/sharing-projects-in-a-work-environment-that-is-utilizing-cloud-network-services.html)
- 📁 [Working With the Project Browser Using Traditional File Management \(/support/article/KB-03003/working-with-the-project-browser-using-traditional-file-management.html\)](/support/article/KB-03003/working-with-the-project-browser-using-traditional-file-management.html)