

Displaying Closed Cabinet Doors and Drawers in a Floor Plan View

Reference Number: **KB-03158**

Last Modified: **February 17, 2022**

The information in this article applies to:





QUESTION

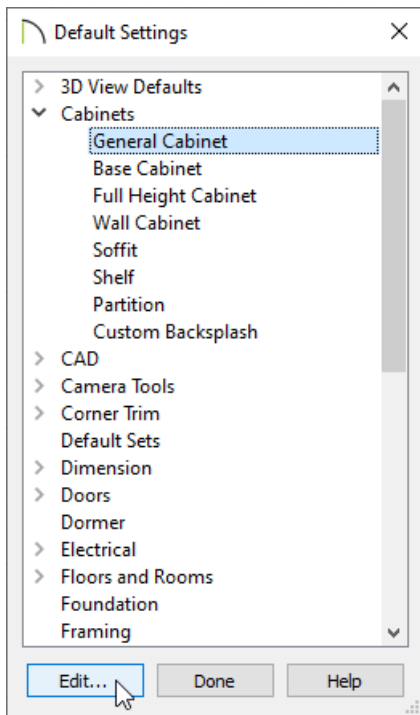
I would like to display my closed cabinet doors and drawers in a floor plan view. I have the "Cabinets, Doors & Drawers" layer set to display, but these components aren't appearing. What am I missing?

ANSWER

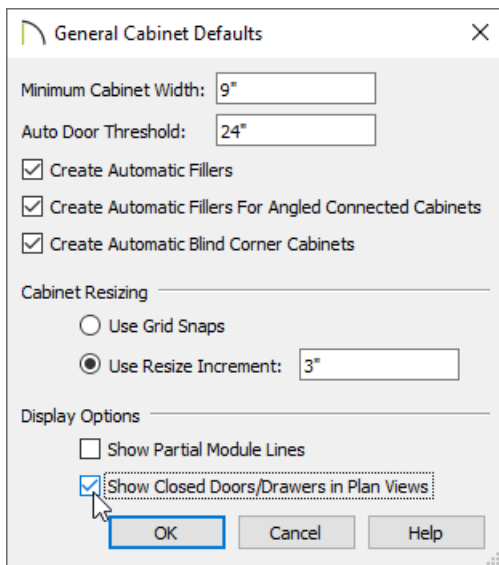
By default, cabinet doors and drawers do not display in plan view when they are closed, even when the "Cabinets, Doors & Drawers" layer is set to display. You can, however, check the Show Closed Doors/Drawers in Plan Views setting located in the General Cabinet Defaults dialog if you would like all cabinets to be affected, or enable the Show Open settings with a Percent Open/Swing Angle value of 0 for a single cabinet.

To display closed doors and drawers in a floor plan for all cabinets

1. **Open**  the plan that you would like to display closed cabinet doors and drawers in.
2. Navigate to **Edit> Default Settings**  from the menu, expand the **Cabinets** category, select the **General Cabinet** subcategory, then click **Edit**.





3. In the **General Cabinet Defaults** dialog that displays, check the **Show Closed Doors/Drawers in Plan Views** box.



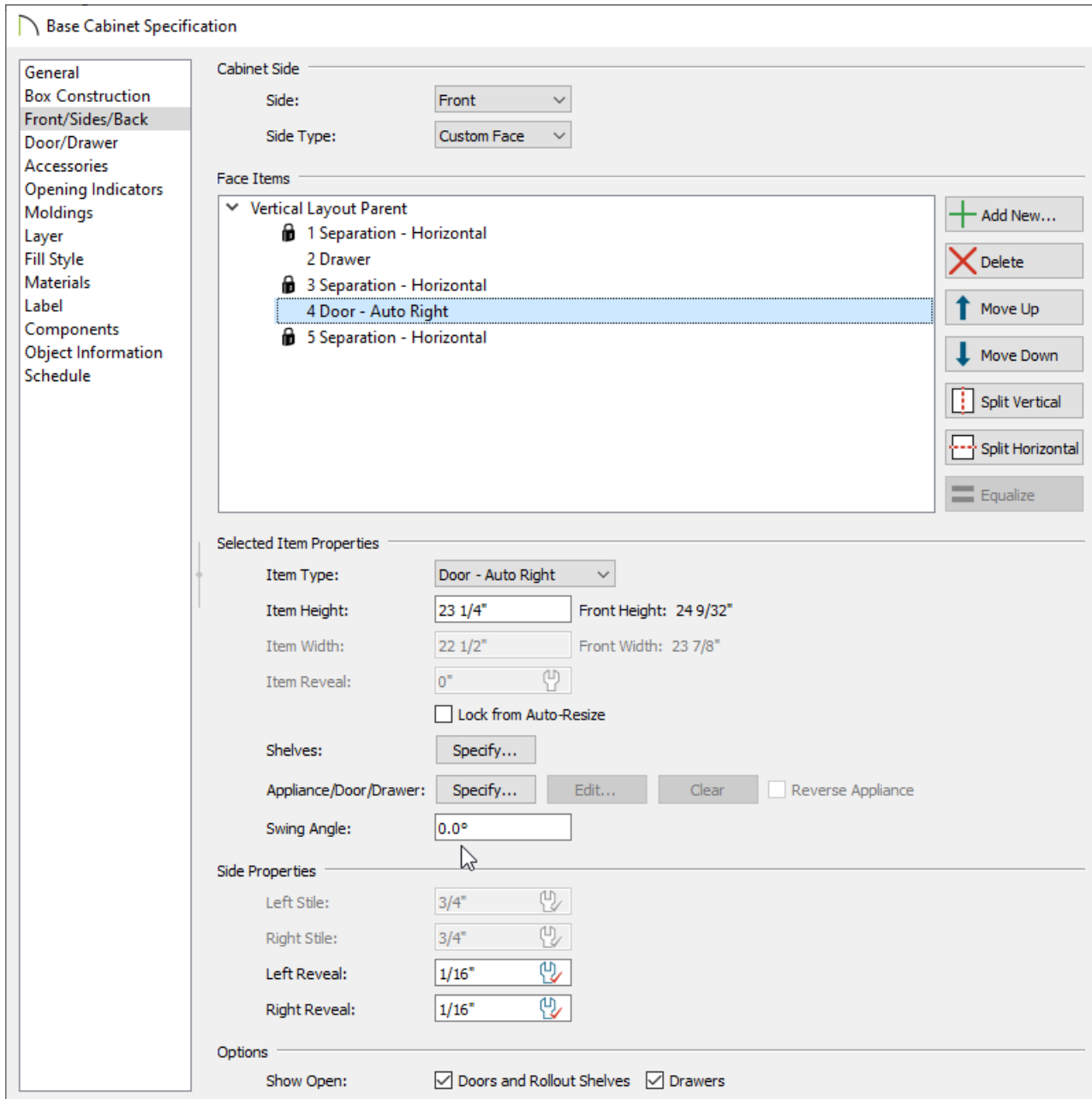
4. Click **OK** and **Done** to confirm the change.

Note: If cabinet doors and drawers do not display after enabling this setting, it's possible that the "Cabinets, Doors & Drawers" layer is not set to display. Access the Layer Display Options or Active Layer Display Options, then enable the display of the mentioned layer.

To display closed doors and drawers in a floor plan for a single cabinet

- Using the **Select Objects**  tool, click on the desired cabinet to select it, then click the **Open Object**  edit tool.
- On the **FRONT/SIDES/BACK** panel of the **Cabinet Specification** dialog that displays:

In Home Designer Pro, select the **FRONT** panel instead.



- Check the **Doors and Rollout Shelves** box and/or the **Drawers** box located in the Show Open section at the bottom.
- Using either the Face Items table or the 3D preview on the right, select the desired door or drawer that you want to display as closed, then change the **Percent Open/Swing Angle** setting to **0**.

Perform this same process for each separate door and drawer face item that you would like to display as closed.

3. Click **OK** to confirm the change.

Related Articles

📌 [Replacing a Cabinet's Standard Shelves with Rollout Shelves or Drawers](https://www.chiefarchitect.com/support/article/KB-03142/replacing-a-cabinet-s-standard-shelves-with-rollout-shelves-or-drawers.html)

(<https://www.chiefarchitect.com/support/article/KB-03142/replacing-a-cabinet-s-standard-shelves-with-rollout-shelves-or-drawers.html>)

📌 [Using Different Door Styles on a Single Cabinet](https://www.chiefarchitect.com/support/article/KB-00040/using-different-door-styles-on-a-single-cabinet.html)(<https://www.chiefarchitect.com/support/article/KB-00040/using-different-door-styles-on-a-single-cabinet.html>)

© 2003–2022 Chief Architect, Inc. All rights reserved // [Terms of Use](https://www.chiefarchitect.com/company/terms.html) (<https://www.chiefarchitect.com/company/terms.html>) // [Privacy Policy](https://www.chiefarchitect.com/company/privacy.html)

(<https://www.chiefarchitect.com/company/privacy.html>)