

# Message: The layer is locked.

---

Reference Number: **KB-02923**

Last Modified: **July 20, 2021**

---

The information in this article applies to:



## QUESTION

When placing an object, I receive the following message:

The layer is locked. Items cannot be created or modified on locked layers. Do you want to unlock the layer?

What does this mean?

## ANSWER

Every item in Chief Architect is assigned a layer. For example, base cabinets are assigned to the 'Cabinets, Base' layer when placed. When a layer has been locked, it prevents objects on that layer from being selected. New objects cannot be drawn on a locked layer, either. If you lock a layer and then attempt to draw a new object on that layer, a message box will ask you to unlock the layer.

Layers with objects that you need to see as a reference while working, but not select, are good candidates for locking.

For example:

- Locking the "Rooms" layer can make it easier to select objects located inside of rooms.
- Locking the "Roof Planes" layer can make it easier to select objects located under the eaves.

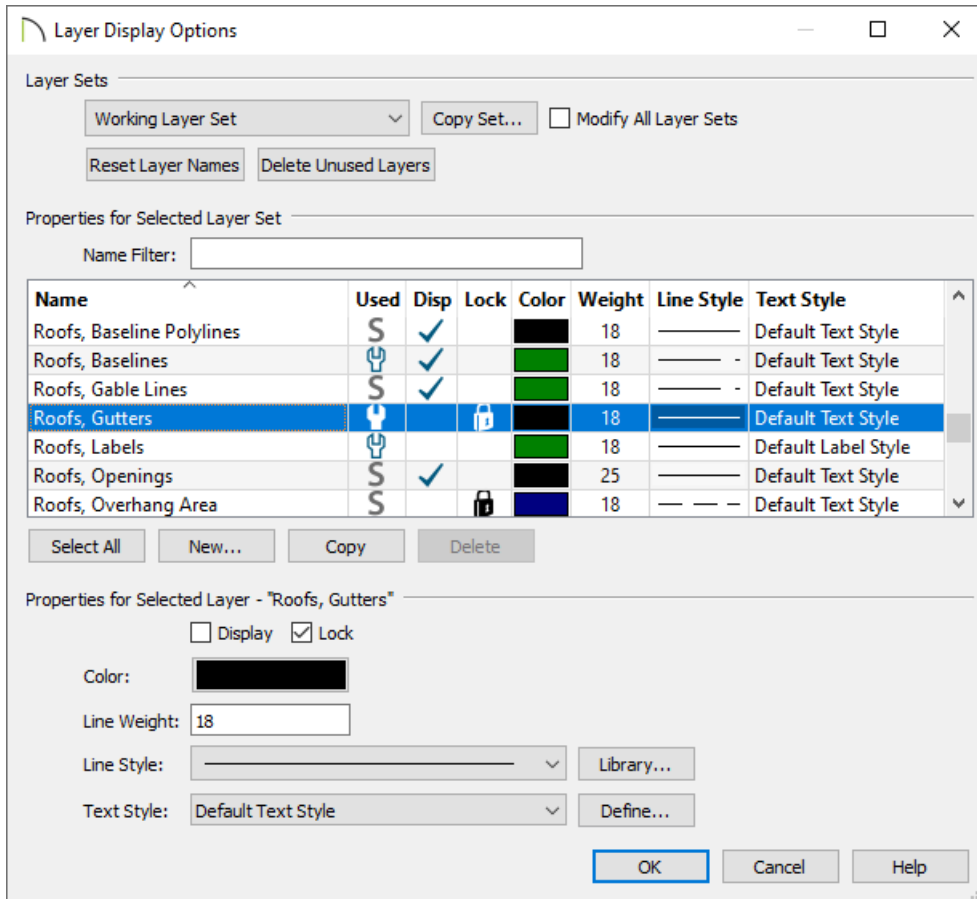
## To lock or unlock layers

1. From the menu select **Tools> Layer Settings> Display Options** .

In Home Designer Pro select **Tools> Display Options** .

2. In the **Layer Display Options** dialog that displays, notice the **Lock** column that is present. If a padlock symbol appears in this column for a selected layer, the layer is locked. Click on the padlock symbol to unlock the layer.

**Note:** You can also lock and unlock layers using the 'Lock' checkbox that displays under the Properties for Selected Layer section when a layer is selected or highlighted.



Some layers that are locked by default include:

- Roofs, Gutters
- Roofs, Overhang Area
- Roofs, Ridge Caps
- Roofs, Trim

3. Click **OK** to confirm your changes and close the dialog.

#### Related Articles

[Understanding Layer Sets \(https://www.chiefarchitect.com/support/article/KB-00765/understanding-layer-sets.html\)](https://www.chiefarchitect.com/support/article/KB-00765/understanding-layer-sets.html)

