

Determining If Your Computer is 32-Bit or 64-Bit

Reference Number: **KB-01230**

Last Modified: **January 18, 2023**

The information in this article applies to:



QUESTION


How do I determine if I have a 32-bit or 64-bit system?

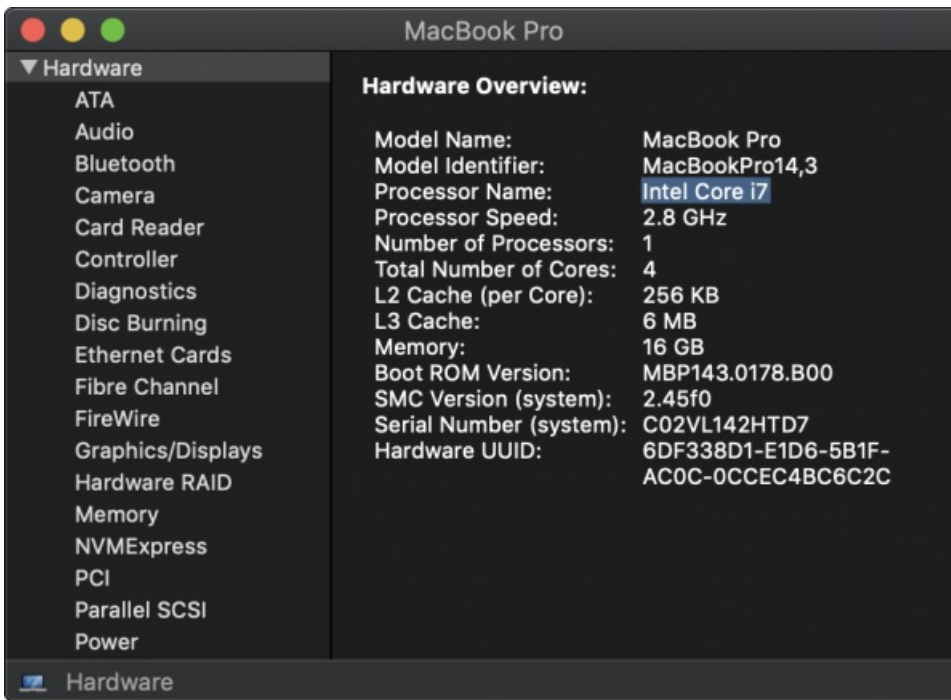
ANSWER

In this article, we will explain how to determine if your system is a 32-Bit or 64-Bit system. Please select the option that is applicable to your operating system:

- [Apple macOS](#)
- [Microsoft Windows](#)

To determine the system type for macOS


1. Open the **Apple**  menu and choose **About This Mac**.
2. Click the **System Report** button. If you do not see this button, click **More Info**, then scroll down and click the **System Report** button.
3. On the **HARDWARE** panel, locate the Processor Name. If you're using a Mac with an M1 or M2 chip, a Processor Name will not be listed; instead, you will see a Model Number and Chip. All M1 and M2 Macs use 64-bit architecture.

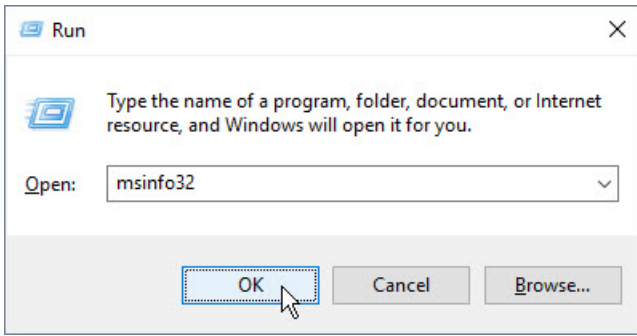


4. If you're using an Intel-based processor, you can use the chart below to identify your processor type.

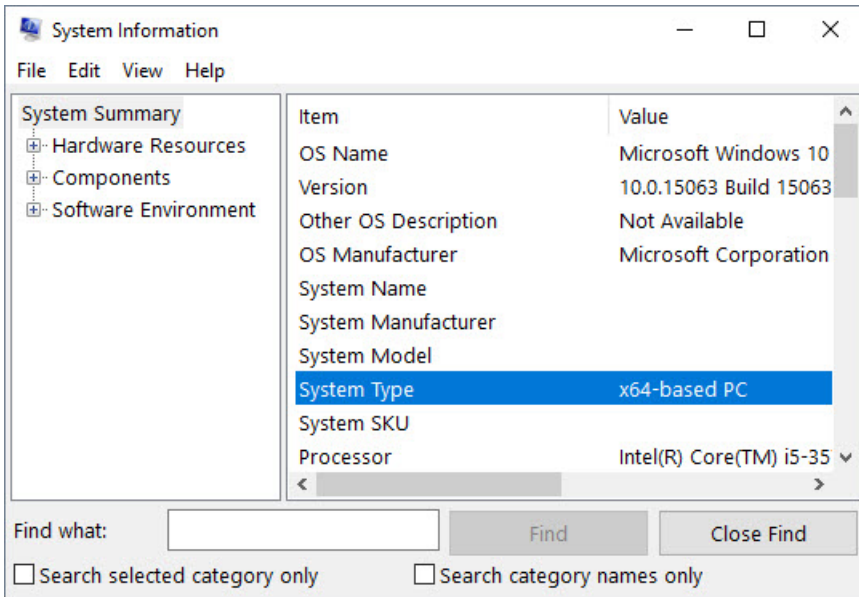
Processor Name	32- or 64-bit
Intel Core Solo	32 bit
Intel Core Duo	32 bit
Intel Core 2 Duo	64 bit
Intel Quad-Core Xeon	64 bit
Dual-Core Intel Xeon	64 bit
Quad-Core Intel Xeon	64 bit
Core i3	64 bit
Core i5	64 bit
Core i7	64 bit

To determine the system type for Windows

1. On the keyboard, hold down the **Windows Key**  and press the letter **R**.
2. In the **Run** dialog that displays, type in `msinfo32` and click **OK**.



3. In the **System Information** dialog that displays, on the **SYSTEM SUMMARY** panel, locate the System Type.



- System Type **x64-based PC** means that you have a 64-bit system.
- System Type **x86-based PC** means that you have a 32-bit system.

Related Articles

- 📄 [Chief Architect Minimum System Requirements \(https://www.chiefarchitect.com/support/article/KB-02761/chief-architect-minimum-system-requirements.html\)](https://www.chiefarchitect.com/support/article/KB-02761/chief-architect-minimum-system-requirements.html)
- 📄 [Locating Your Computer's Specifications \(/support/article/KB-03129/locating-your-computer-s-specifications.html\)](/support/article/KB-03129/locating-your-computer-s-specifications.html)
- 📄 [Retrieving System Information to Send to Technical Support \(/support/article/KB-01867/retrieving-system-information-to-send-to-technical-support.html\)](/support/article/KB-01867/retrieving-system-information-to-send-to-technical-support.html)