



# Applying Two Different Door or Drawer Styles to a Single Cabinet in Home Designer

Reference Number: **KB-01216**

Last Modified: **September 24, 2025**

This article also applies to the following legacy products:

Pro

## QUESTION

I would like the front of my cabinet to have two different door or drawer styles. How can I create this effect?



# ANSWER



In Home Designer 2026 and newer, as well as in Home Designer Pro 2025 and prior, two different door or drawer styles can be applied within a single cabinet by accessing the Cabinet Specification dialog and modifying the face items.

You can also make the following modifications within your Cabinet Defaults if you would like these changes to be applied to new cabinets that you create in your plan.

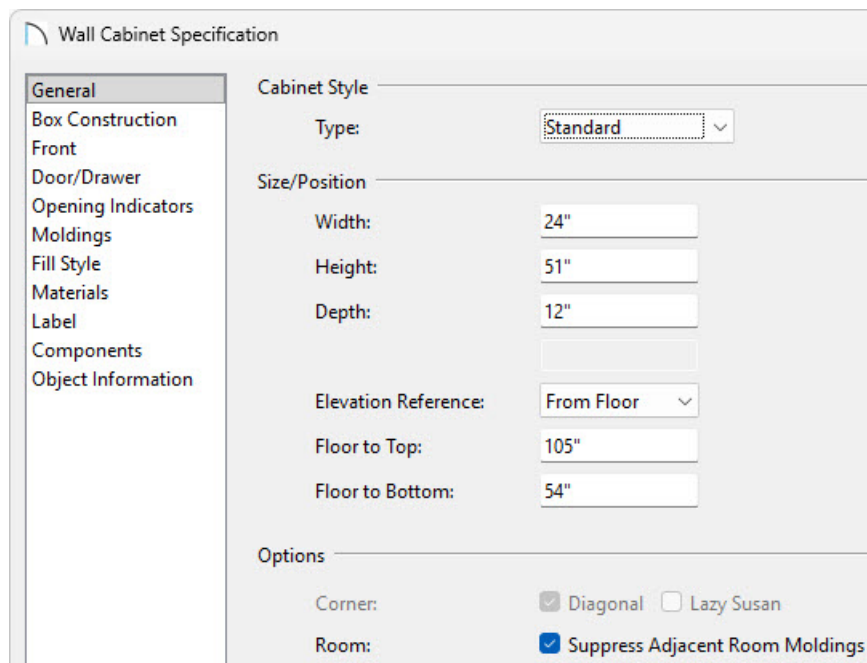
## To apply two different door or drawer styles to a cabinet

1. Access the desired plan, navigate to **Build> Cabinet** , select an appropriate Cabinet tool, then click to place the cabinet in your plan.

In this example, we placed a Wall Cabinet.

2. Using the **Select Objects**  tool, select the cabinet, then click on the **Open Object**  edit button.
3. On the **GENERAL** panel of the **Cabinet Specification** dialog that displays, specify the **Width, Height, Depth**, and **Floor to Top/Bottom** values to your liking.

In this example, the Width is set to 36", the Height is set to 48", the Depth is set to 15", and the Floor to Bottom is set to 54".



The image shows a software dialog box titled "Wall Cabinet Specification". On the left is a vertical sidebar with a list of categories: General, Box Construction, Front, Door/Drawer, Opening Indicators, Moldings, Fill Style, Materials, Label, Components, and Object Information. The "General" category is currently selected and highlighted. The main area of the dialog is divided into three sections: "Cabinet Style", "Size/Position", and "Options". In the "Cabinet Style" section, the "Type:" is set to "Standard" in a dropdown menu. The "Size/Position" section contains input fields for "Width:" (24"), "Height:" (51"), and "Depth:" (12"). Below these is an "Elevation Reference:" dropdown set to "From Floor", followed by "Floor to Top:" (105") and "Floor to Bottom:" (54"). The "Options" section at the bottom has two rows: "Corner:" with checkboxes for "Diagonal" (checked) and "Lazy Susan" (unchecked), and "Room:" with a checked checkbox for "Suppress Adjacent Room Moldings".

Section	Property	Value
Cabinet Style	Type	Standard
	Size/Position	
Size/Position	Width	24"
	Height	51"
	Depth	12"
	Elevation Reference	From Floor
	Floor to Top	105"
	Floor to Bottom	54"
Options	Corner	<input checked="" type="checkbox"/> Diagonal <input type="checkbox"/> Lazy Susan
	Room	<input checked="" type="checkbox"/> Suppress Adjacent Room Moldings

4. On the **FRONT** panel, select the door or drawer Face Item that you would like to modify, then click the **Specify** button next to Appliance/Door/Drawer.

In this example, the 2 Door - Auto Right Face Item is selected. Notice that there are two door Face Items as part of this cabinet; we will be adjusting the upper most door in this example.

Wall Cabinet Specification

General

Box Construction

**Front**

Door/Drawer

Opening Indicators

Moldings

Fill Style

Materials

Label

Components

Object Information

Face Items

☐ Use Default

Vertical Layout Parent

- 1 Separation - Horizontal
- 2 Door - Auto Right** Default: Recessed Panel DP
- 3 Separation - Horizontal
- 4 Door - Auto Right Default: Recessed Panel DP
- 5 Separation - Horizontal

+ Add New...

✖ Delete

↑ Move Up

↓ Move Down

Split Vertical

Split Horizontal

Equalize

Selected Item Properties

Item Type: Door - Auto Right

Item Height: 12" Front Height: 12 3/4"

Item Width: 21" Front Width: 22 1/2"

☒ Lock from Auto-Resize

Shelves: Specify...

Appliance/Door/Drawer: Specify... Clear ☐ Reverse Appliance

Swing Angle: 90.0°

Side Properties

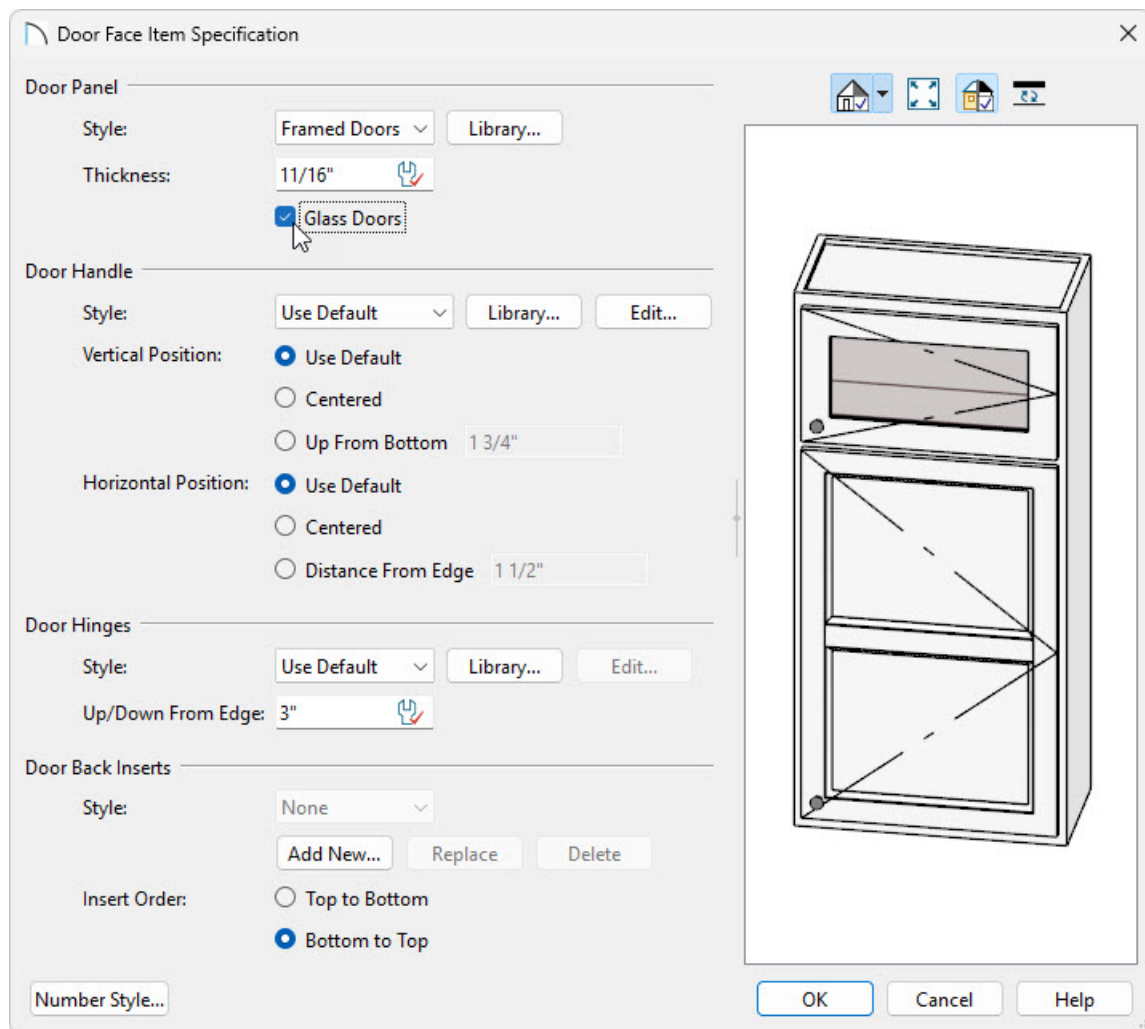
Left Stile: 1 1/2"

Right Stile: 1 1/2"

Options

Show Open: ☐ Doors and Rollout Shelves ☐ Drawers

5. In the **Door/Drawer Face Item Specification** dialog that displays next:




- Use the **Style** drop-down or click the **Library** button to browse the Library for a door style that matches your needs.
- Modify the other components for this Face Item, such as the Door/Drawer Handle, Door Hinges, etc.
- Once all desired changes have been made, click **OK**.

6. Back in the **Cabinet Specification** dialog, click on any other Face Items that you would like to be different from the rest of the cabinet, and follow the steps mentioned above.

If you would like to modify more than one cabinet at a time, use the Shift key to select several cabinets and change their attributes all at once, or use the object painter to take the attributes from one cabinet and place them on other cabinets.


Alternatively, you can apply the steps mentioned above within your Cabinet Defaults so that each new cabinet placed will have two different door/drawer styles.

7. Make any other desired changes to the cabinet, such as adjusting the **MATERIALS** or **MOLDINGS** that are applied, then click **OK**.
8. Create a **Camera**  view to see the results.



You can add a customized cabinet to the Library Browser for future use. To do this, select the cabinet and click the Add to Library edit tool to add it to the User Catalog folder.

#### Related Articles

-  [Adding Glass Doors to a Cabinet \(/support/article/KB-00436/adding-glass-doors-to-a-cabinet.html\)](/support/article/KB-00436/adding-glass-doors-to-a-cabinet.html)
-  [Changing Cabinet Door Swing Sides \(/support/article/KB-02982/changing-cabinet-door-swing-sides.html\)](/support/article/KB-02982/changing-cabinet-door-swing-sides.html)
-  [Creating a Bank of Drawers in a Cabinet \(/support/article/KB-00189/creating-a-bank-of-drawers-in-a-cabinet.html\)](/support/article/KB-00189/creating-a-bank-of-drawers-in-a-cabinet.html)

## Creating an Etched Glass Cabinet Door (/support/article/KB-00438/creating-an-etched-glass-cabinet-door.html)

© 2003–2025 Chief Architect, Inc. All rights reserved // [Terms of Use \(https://www.chiefarchitect.com/company/terms.html\)](https://www.chiefarchitect.com/company/terms.html) // [Privacy Policy \(https://www.chiefarchitect.com/company/privacy.html\)](https://www.chiefarchitect.com/company/privacy.html)