

# Turning Off the Display of Object Labels

---

Reference Number: **KB-01080**

Last Modified: **July 20, 2020**

---

The information in this article applies to:



## QUESTION

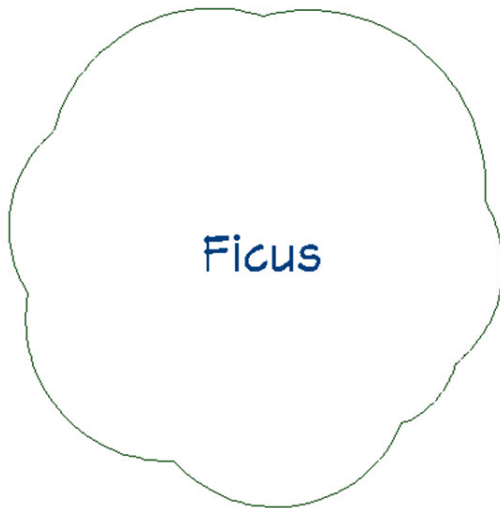
Labels for objects such as plants, fixtures, furniture, or cabinets display in my floor plan view, and I would like to turn them off. How can I do this?


## ANSWER

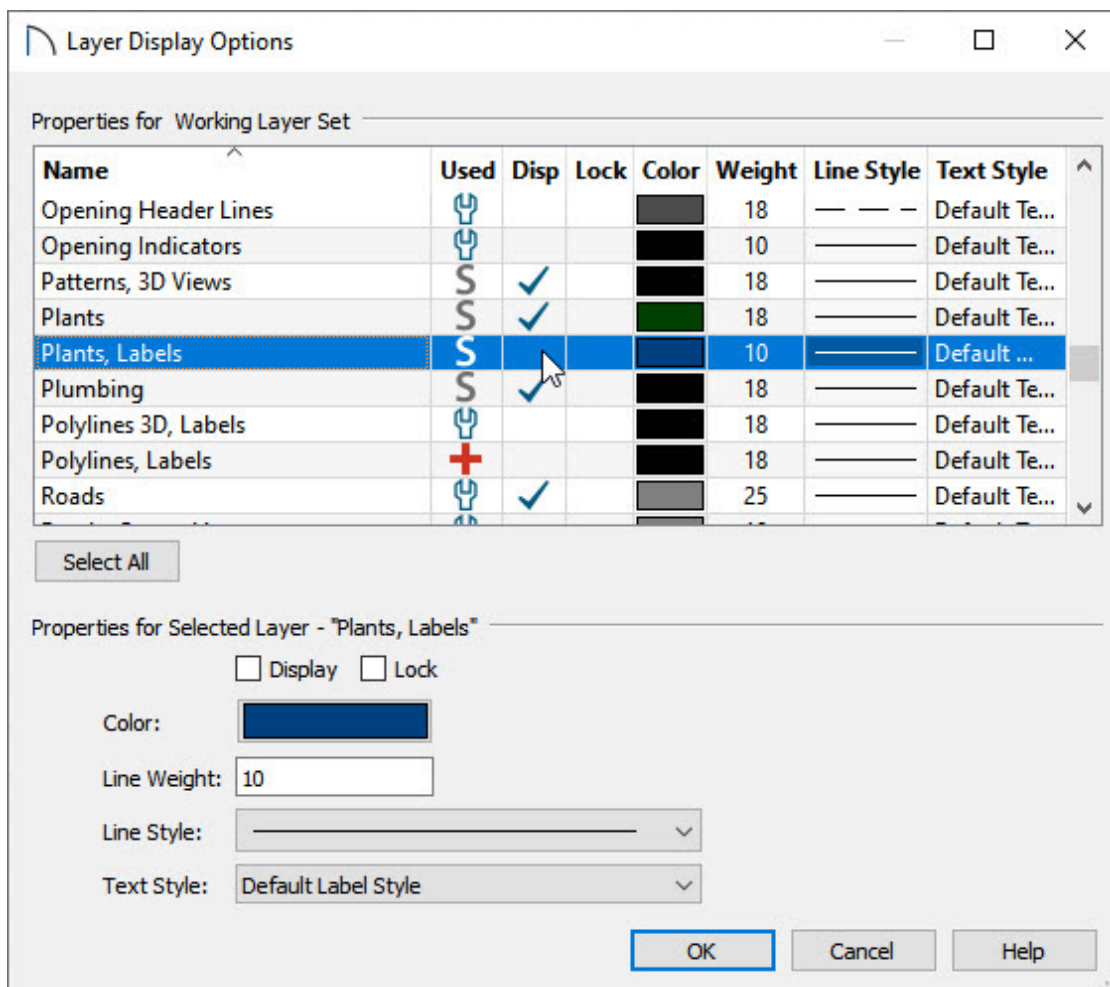
Turning off the display of labels is easy to accomplish in the Display Options dialog.

To turn off object labels

1. First, launch Home Designer and **Open**  the plan in which you would like to turn off the display of labels.



2. Select **Tools> Display Options**  from the menu.
3. Scroll down to find the layer associated with the objects whose labels you would like to turn off.



- For example, to turn off the display of plant labels, first find the "Plants" layer.
  - The next layer in the list is "Plants, Labels." Click in the **Disp** column to remove the checkmark for this layer.
4. Repeat this procedure for any other object labels that you do not want to see in plan view.
5. Finally, click **OK** to close the dialog and apply your changes.



[\(https://hometalk.chiefarchitect.com/\)](https://hometalk.chiefarchitect.com/)



[\(https://chiefarchitectblog.com/\)](https://chiefarchitectblog.com/)



[\(https://www.facebook.com/ChiefArchitect\)](https://www.facebook.com/ChiefArchitect)



[\(https://www.youtube.com/user/ChiefArchitectInc\)](https://www.youtube.com/user/ChiefArchitectInc)



[\(https://www.instagram.com/chiefarchitectsoftware/\)](https://www.instagram.com/chiefarchitectsoftware/)



[\(https://www.houzz.com/pro/chiefarchitect/\)](https://www.houzz.com/pro/chiefarchitect/)



[\(https://www.pinterest.com/chiefarchitect/\)](https://www.pinterest.com/chiefarchitect/)