

Using the Dimension Tools

Reference Number: **KB-01002**

Last Modified: **May 25, 2022**


The information in this article applies to:



QUESTION

How do I use the different dimension tools in Home Designer?

ANSWER

Select **CAD> Dimension**  to access most of the dimension tools available in Home Designer.

We will discuss both manually-drawn dimensions and automatic dimensions in this article, including:

- [Manual Dimensions](#)
- [Interior Dimensions](#)
- [Auto Exterior Dimensions](#)
- [Auto Room/Interior Dimensions](#)
- [End to End Dimensions](#)
- [Point to Point Dimensions](#)
- [Angular Dimensions](#)
- [Temporary Dimensions](#)
- [Tape Measure](#)
- [Moving Objects Using Dimensions](#)

Not all of the dimension tools listed in this article are available in all versions of Home Designer.

If you're interested in upgrading to a higher version of the software that has one of the tools listed here, please [contact our Sales team](#) (<https://www.homedesignersoftware.com/company/contact.html>) to discuss your upgrade options.

Keep in mind that with the exception of angular dimensions, dimension lines only locate objects that are parallel,


or nearly parallel to one another, and should be drawn orthogonal (at right angles) to the objects being located.

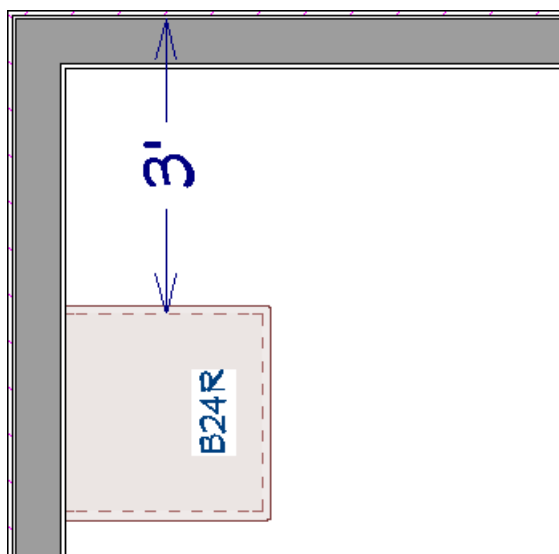
Once created, dimension lines can be selected and edited to your liking.

For more information on dimensions, please access the [Related Articles](#) section below or access your program's documentation by navigating to Help> Launch Help.

Manual Dimensions

**Available in all Home Designer products*

Use the **Manual Dimension**  tool to create dimension lines that locate all eligible objects positioned between their start and end points.




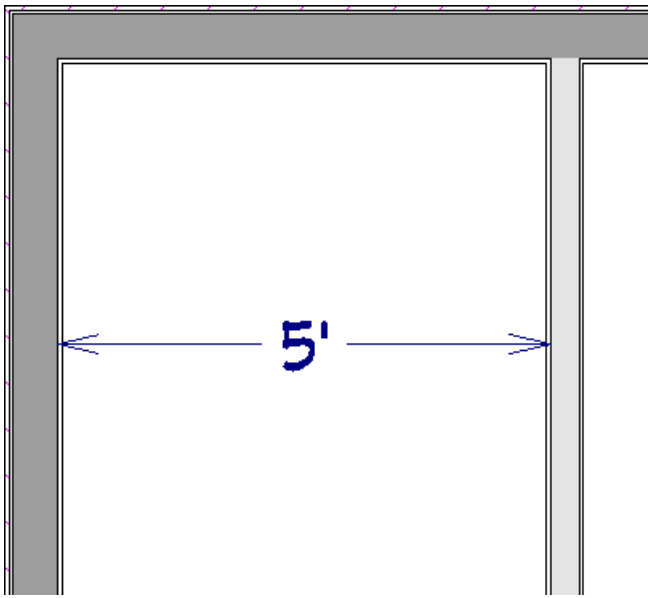
Manual dimensions locate walls as specified in the Dimension Defaults dialog.

In Home Designer Pro, additional locate controls are available for manual dimensions. Also, starting in Home Designer Pro 2023, framing can be dimensioned in Cross Section/Elevation views using manual dimensions.

Interior Dimensions

**Available in all Home Designer products*

Use the **Interior Dimension** tool  to create dimension lines that measure the interiors of rooms.




The Interior Dimension tool will locate the main wall layer.

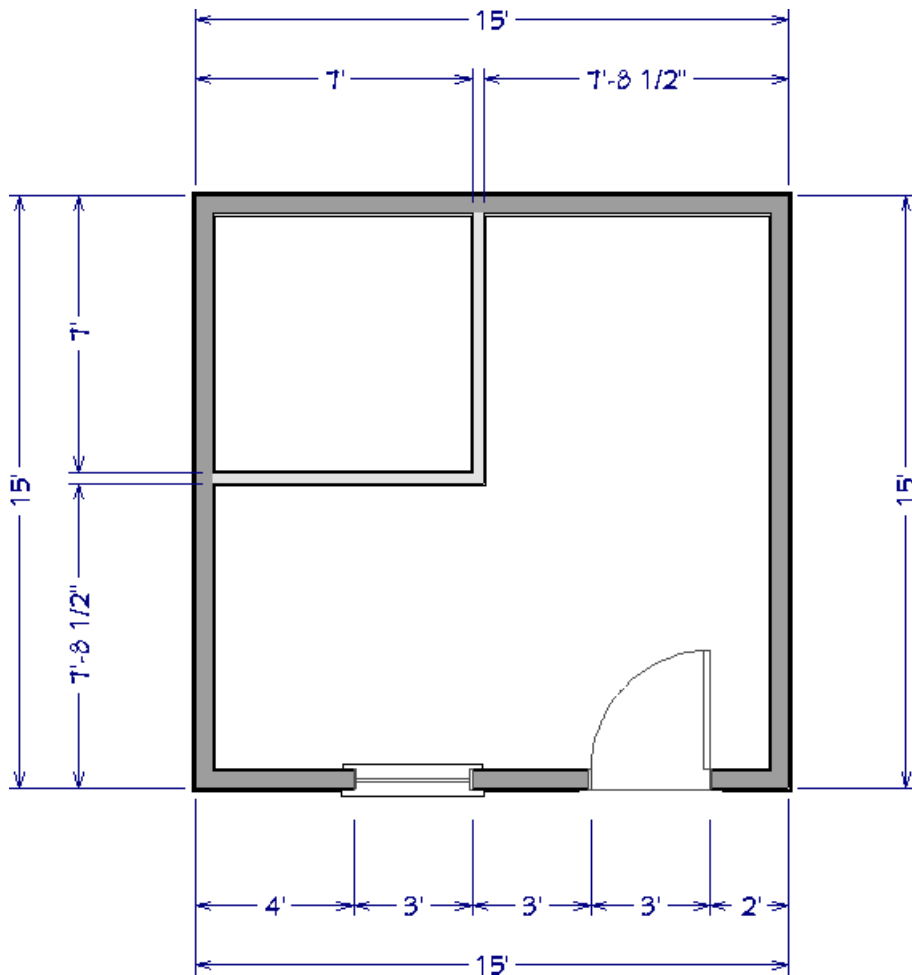
In Home Designer Pro, the option to locate the main wall layer or the wall's surface can be specified in the Dimension Defaults dialog. Also, Starting in Home Designer Pro 2023, framing can be dimensioned in Cross Section/Elevation views using interior dimensions.

To create interior dimensions that locate wall surfaces in the lesser products, use [Auto Room/Interior Dimensions](#) instead.

Auto Exterior Dimensions

**Available in all Home Designer products*

The **Auto Exterior Dimension**  tool generates dimensions around a plan's exterior in a plan view.



Auto exterior dimension lines locate walls as specified in the Dimension Defaults dialog.

In Home Designer Pro, additional locate controls are available for auto exterior dimensions.

There are a maximum of three rows of automatically generated dimensions per exterior wall direction.


- The innermost dimension line locates exterior walls, interior walls, and all openings in exterior walls.
- The second dimension line locates exterior and interior walls.
- The outermost dimension line is the overall exterior dimension.

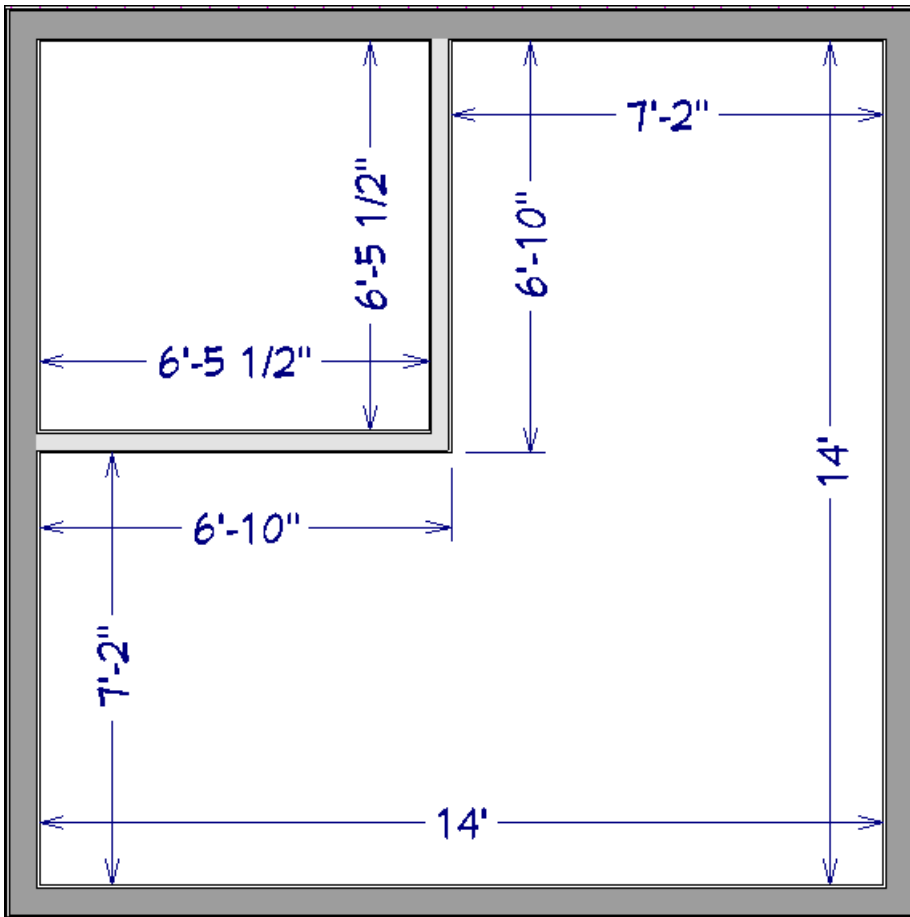
Auto exterior dimensions do not generate properly if there is a gap in the exterior walls or if they do not connect properly.

If you edit an auto exterior dimension line, it will be converted to a manual dimension, so if auto exterior dimensions are later regenerated, your changes will not be lost.

Auto Room/Interior Dimensions

**Available in all Home Designer products*

Select one or more rooms in a plan view, then click the **Auto Room/Interior Dimensions**  edit tool located along the Edit toolbar to generate interior dimensions that measure each wall defining the selected room(s).




Auto room/interior dimension lines are generated inside of the rooms they measure and locate the interior surface of walls and openings.

In Home Designer Pro, additional locate controls are available for auto room/interior dimensions.

Auto room/interior dimension lines do not recognize the No Locate setting for walls. If a wall is specified as No Locate, auto room/interior dimensions will locate it anyway.

End to End Dimensions

**Available in all Home Designer products*


Use the **End to End Dimension**  tool to create a dimension line that locates an eligible object at its start and end points, but ignores any objects in between.

End to end dimensions locate objects as specified in the Dimension Defaults dialog.

In Home Designer Pro, additional locate controls are available for end to end dimensions. Also, Starting in Home Designer Pro 2023, framing can be dimensioned in Cross Section/Elevation views using end to end dimensions.

Point to Point Dimensions


**Available in Home Designer Pro*

Use the **Point to Point Dimension**  tool to create dimension lines that locate an eligible object at their start and end points. If no object is present at either location, a point marker is created and the dimension line locates it instead.

If the objects or point markers located by a point to point dimension line are moved, the dimension updates to reflect the change.

Angular Dimensions

**Available in Home Designer Pro*


Use the **Angular Dimension**  tool to measure the angle between any two straight edges, including walls, cabinets, and the straight sides of polyline-based objects. To create an angular dimension, click on the first edge to be dimensioned, then drag an arc and release on the second edge. Do not pull the angular dimension past the object as you might with a normal straight dimension line.

Angular dimensions can be selected and moved by dragging from a handle along the arc in its middle. The dimension moves to maintain the location of its own arc center. If one of the dimensioned objects is moved, the angular dimension adjusts, but may have to be moved manually to a more visible position.

By default, angular dimensions use the angle style specified in the Dimension Defaults dialog.


Tape Measure

**Available in all Home Designer products*

Use the **Tape Measure**  tool to draw a temporary dimension line between any two points in the drawing area. The tool will place temporary markers at the start and end points of the dimension line. The tape measure line and its start and end points all disappear when you release the mouse button.

If Object Snaps are enabled and an object is located by the temporary line, you can snap to it.

Temporary Dimensions

Temporary Dimensions display automatically when an object is selected and report the distance between that object's selected edge and other objects. Select **View> Temporary Dimensions**  to turn on or off the display of temporary dimensions. This toggle affects all views and is saved between launches of Home Designer.

A temporary dimension will only display when an object is selected, and as with other dimension lines, it will only locate objects that are parallel or nearly parallel to one another. Temporary dimensions will also locate the endpoints of CAD lines and the corners of objects located past the end of the selected edge, within 4 feet (1200 mm) of the point where you click to select the object.

Moving Objects Using Dimensions

Most objects can be moved by changing an automatic, manual, or temporary dimension value that locates it. This technique can be applied in nearly any situation where dimensions are present, including angular dimensions.

Your pointer indicates which dimensions can be used to relocate the selected object by changing to a pointing hand icon. Click on the dimension when the pointing hand icon is present, and then enter the new value you wish to use.

Another way to tell is to select an object and drag it in the desired direction. As you drag, note which dimensions update. These dimensions are the dimensions that can be used to move that object.

[Return to Top](#)

Related Articles

[📄 Changing Your Dimension Settings \(/support/article/KB-00491/changing-your-dimension-settings.html\)](/support/article/KB-00491/changing-your-dimension-settings.html)

[📄 Deleting Dimensions \(/support/article/KB-00139/deleting-dimensions.html\)](/support/article/KB-00139/deleting-dimensions.html)

[📄 Positioning Objects Precisely Using Dimensions \(/support/article/KB-00487/positioning-objects-precisely-using-dimensions.html\)](/support/article/KB-00487/positioning-objects-precisely-using-dimensions.html)