

# Message: At the selected scale, this view is too large to fit on the layout page.

---

Reference Number: **KB-00978**

Last Modified: **July 15, 2024**

---

The information in this article applies to:



## QUESTION

When I send a view to layout, I receive one of the following messages:

- "#272012934 - At the selected scale, this view is too large to fit on the layout page. You can change the current scale by selecting the Layout Box and using the Rescale Layout View edit toolbar button."
- "#272032572 - At the selected scale, this view is too large to fit on the layout page. Do you want to continue?"

Why is this happening?


## ANSWER

One of these messages may appear when you send a view to layout at a scale that makes it either taller than the layout drawing sheet's height or wider than its width, or both.

There are several ways to address this issue, including:

- Specifying a smaller scale for the view;
- Using a larger drawing sheet;
- Reducing the content displayed in the layout box.

### To specify a smaller scale for the view

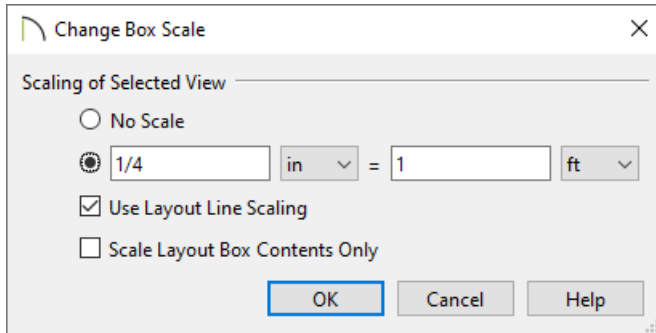
1. Select the layout view that is too large to fit within the layout page and click the **Rescale Layout View\***  edit button.

*\*Available in Chief Architect Premier and Chief Architect Interiors. If you're using Home Designer Pro, the view must*

be resent to the layout at a smaller scale.

2. In the **Change Box Scale** dialog, reduce the scale, then click **OK**.

**Note:** Unless you want the line weights and line styles in your view to be subject to scaling, ensure that "Use Layout Line Scaling" is checked.




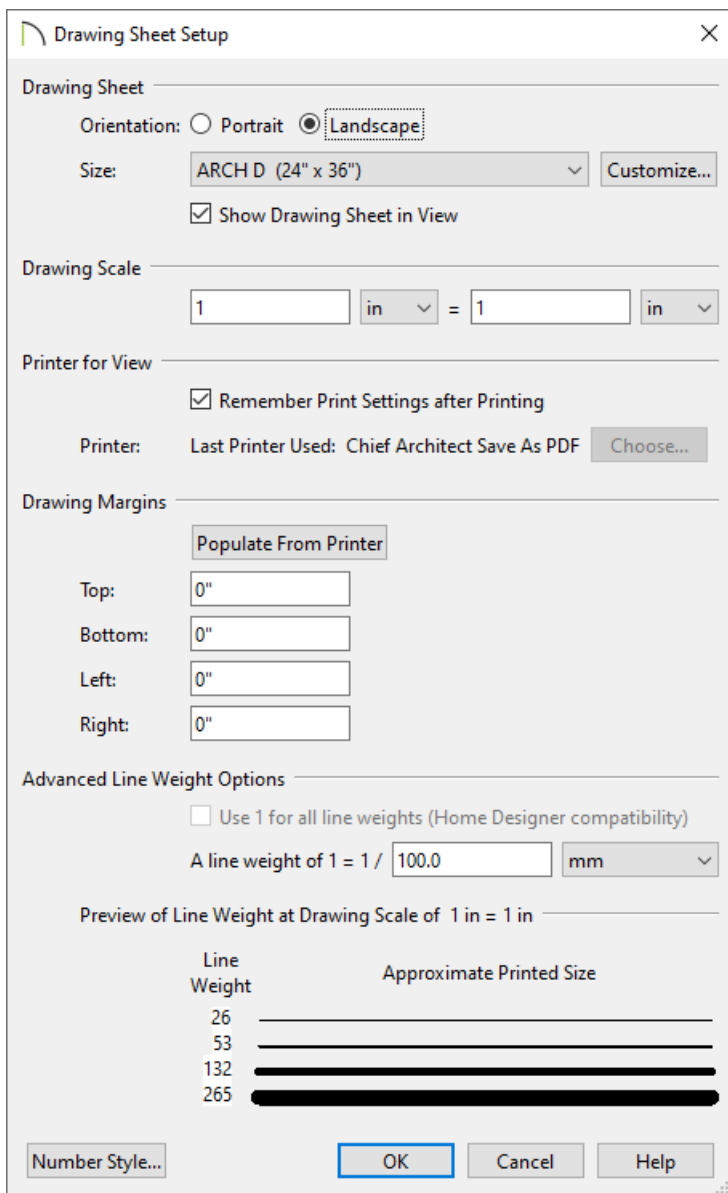
In Chief Architect Premier, additional layout box edit tools are available, including Pan/Scale Layout Box, Recenter Layout Box Contents, and Scale Layout Box Contents To Fit. To learn more about these tools, please access your program's documentation.

If you absolutely need to print the view at a particular scale, but that scale does not allow the view to fit on the layout sheet at its current size, then you will need to use a larger layout sheet. Bear in mind that if you change a layout file's drawing sheet size, you will also need to adjust the border and title block on Page 0. You may find it easier to simply create a new layout using a template with a larger drawing sheet. Please see the [Related Articles](#) section to learn more.

## To use a larger layout drawing sheet

It's important that you are in a layout file and NOT a plan file while following the steps below.

1. Within a layout file, navigate to **File> Print> Drawing Sheet Setup** .
2. In the **Drawing Sheet Setup** dialog, select the desired **Size**, ensure that the **Drawing Scale** is one to one (1 in = 1 in or 1 mm = 1 mm), then click **OK**.



3. Switch to Layout Page 0 and edit the layout's title block and border so that it fits the new drawing sheet size. Please see the [Related Articles](#) section to learn more.

If the layout view in question includes objects that you do not actually need to display, you can turn off the layers associated with those objects and then edit the layout view's box so that it is smaller.

## To reduce the content displayed in the layout box

1. Examine the layout view that was sent and identify any objects that you do not need to show.

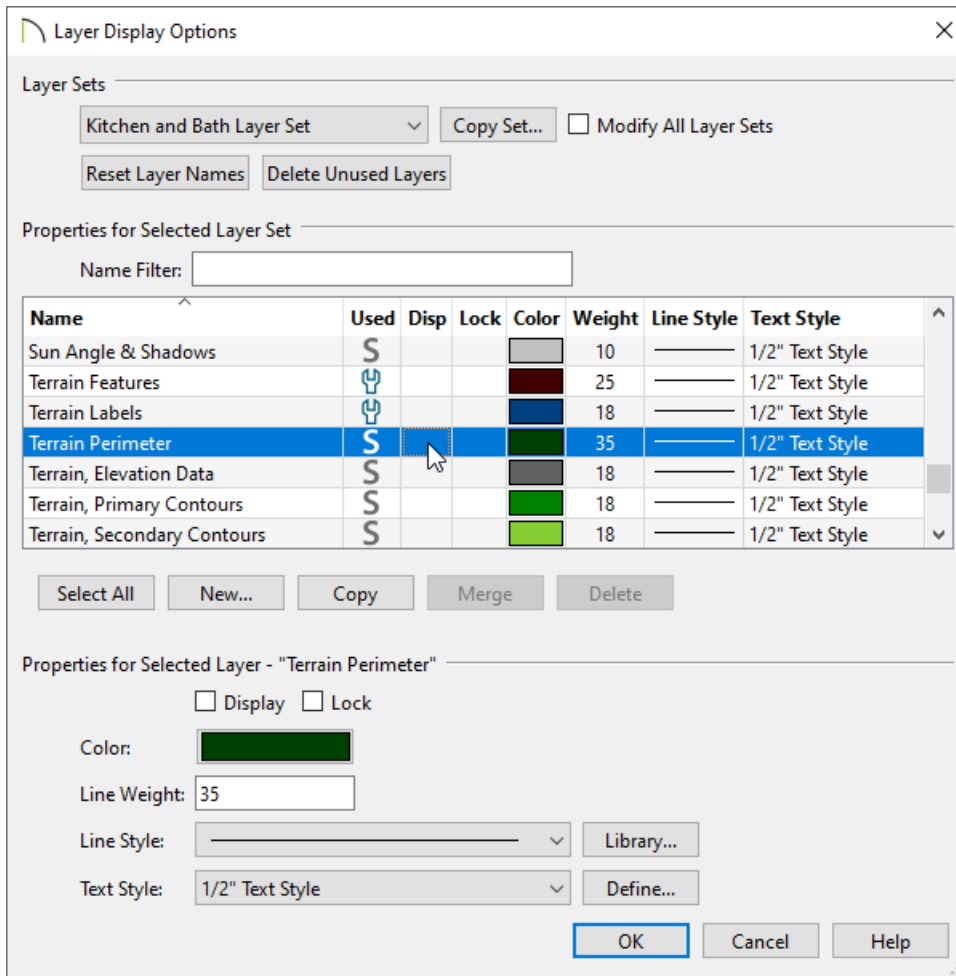
For example, if the view in question is meant to show the kitchen in plan view, you likely don't need to show the terrain.

2. Click on the layout box to select it, then click the **Layout Box Layers\***  edit button.

*\*Available in Chief Architect Premier and Chief Architect Interiors. If you're using Home Designer Pro, access the*

original view located in the plan file, toggle any unwanted layers off, then resend the view to layout.

3. In the **Layer Display Options** dialog:



- Notice the name of the **Layer Set** at the top of the dialog box. Keep in mind that any other views that use this Layer Set will be affected by changes that you make.
- Turn off the display of any unwanted layers by removing the check from the **Disp** column or **Display** checkbox.
- Click **OK**.

4. With the layout box still selected, use the various edit handles to resize and reposition the box, as needed.

#### Related Articles

- 📄 [Creating and Using Layout Templates \(https://www.chiefarchitect.com/support/article/KB-00737/creating-and-using-layout-templates.html\)](https://www.chiefarchitect.com/support/article/KB-00737/creating-and-using-layout-templates.html)
- 📄 [Resizing a Layout Title Block and Border \(https://www.chiefarchitect.com/support/article/KB-02862/resizing-a-layout-title-block-and-border.html\)](https://www.chiefarchitect.com/support/article/KB-02862/resizing-a-layout-title-block-and-border.html)
- 📄 [Resizing a Layout Title Block and Border in Home Designer Pro \(/support/article/KB-01829/resizing-a-layout-title-block-and-border-in-home-designer-pro.html\)](/support/article/KB-01829/resizing-a-layout-title-block-and-border-in-home-designer-pro.html)

