

Creating an Attic Truss

Reference Number: **KB-00933**

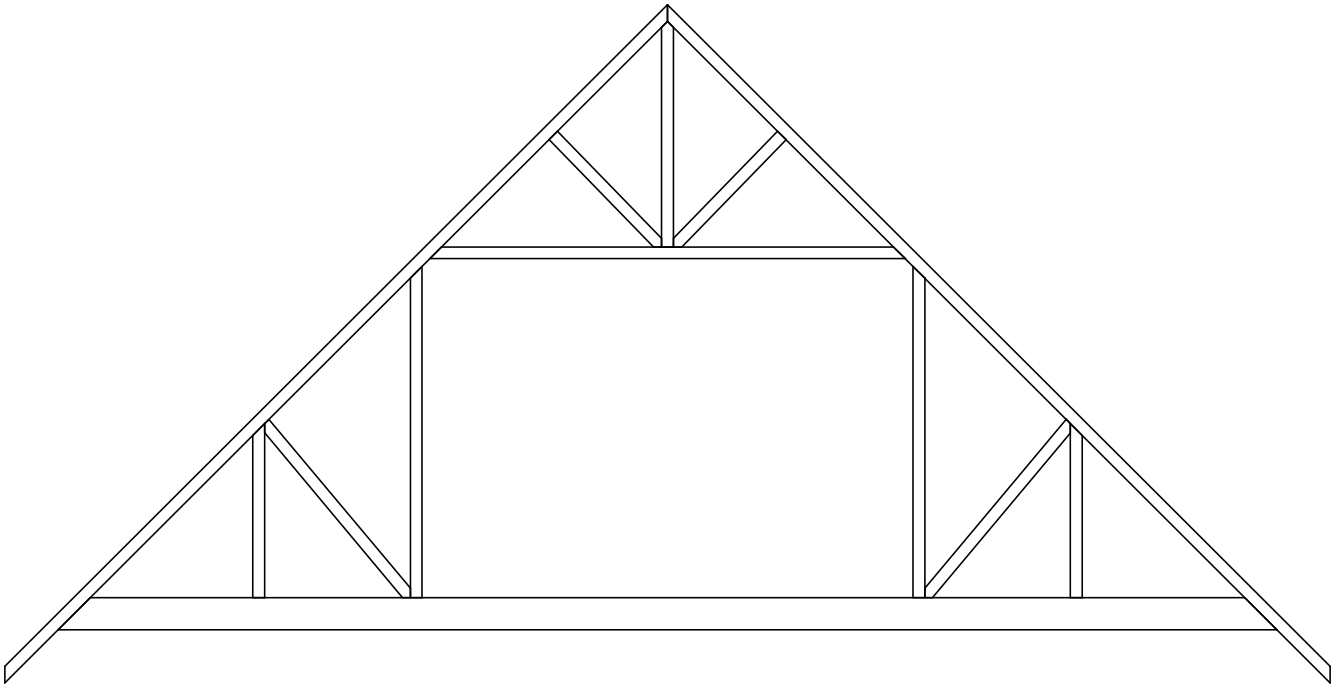
Last Modified: **February 13, 2019**

The information in this article applies to:



QUESTION

How do I create an attic truss?



ANSWER



An attic truss is a type of roof truss with an open space at its bottom center to accommodate a living space, with webbing above and on either side of this living space.

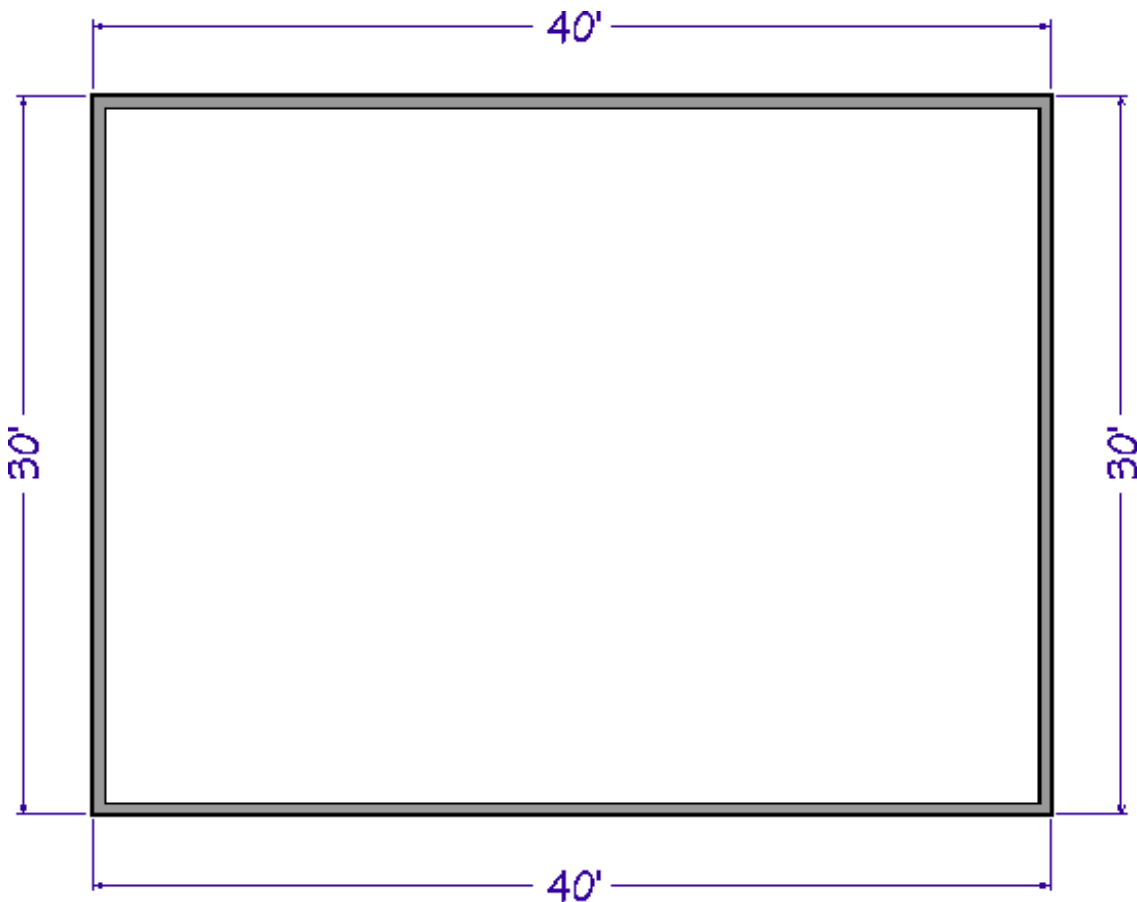
In order to create an attic truss, certain conditions must be met in the plan:

- The structure must be wide enough and the roof steep enough to allow space for a loft area with attic rooms on either side of it. The loft area must have Attic rooms on both sides and must be separated from these Attic rooms by Knee Walls.
- The loft area cannot be on Floor 0 or Floor 1 - it must have a living space below it that has a flat ceiling.
- The roof must bear on the walls defining the floor below the loft area. It cannot bear on knee walls.
- Each side of the roof must be composed of a single roof plane forming a continuous slope with a single pitch from baseline to ridge.
- The loft area must have a flat ceiling.



To create the structure

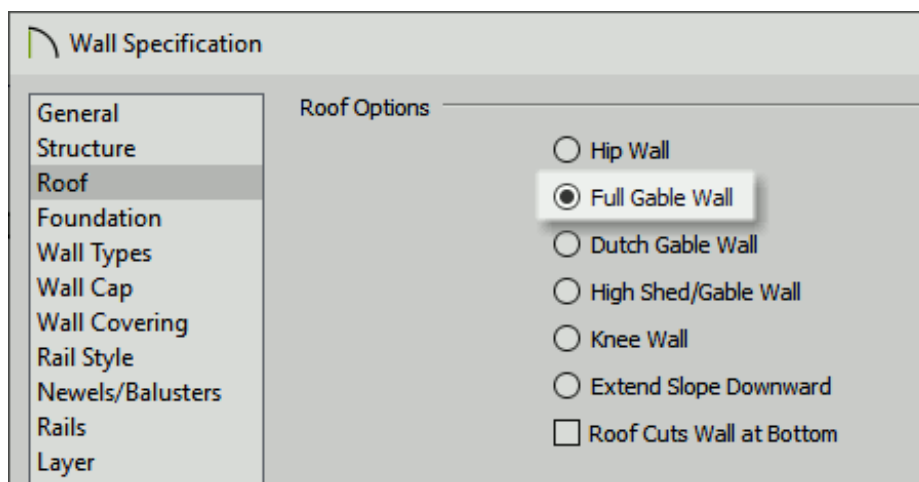
Because attic trusses require specific conditions to be met before they can be created, we'll begin by drawing a simple structure that meets those requirements.



1. Select **File> New Plan**  from the menu to open a new, blank plan.
2. Select **Build> Wall> Straight Exterior Wall**  from the menu, then click and drag to draw a rectangular structure.



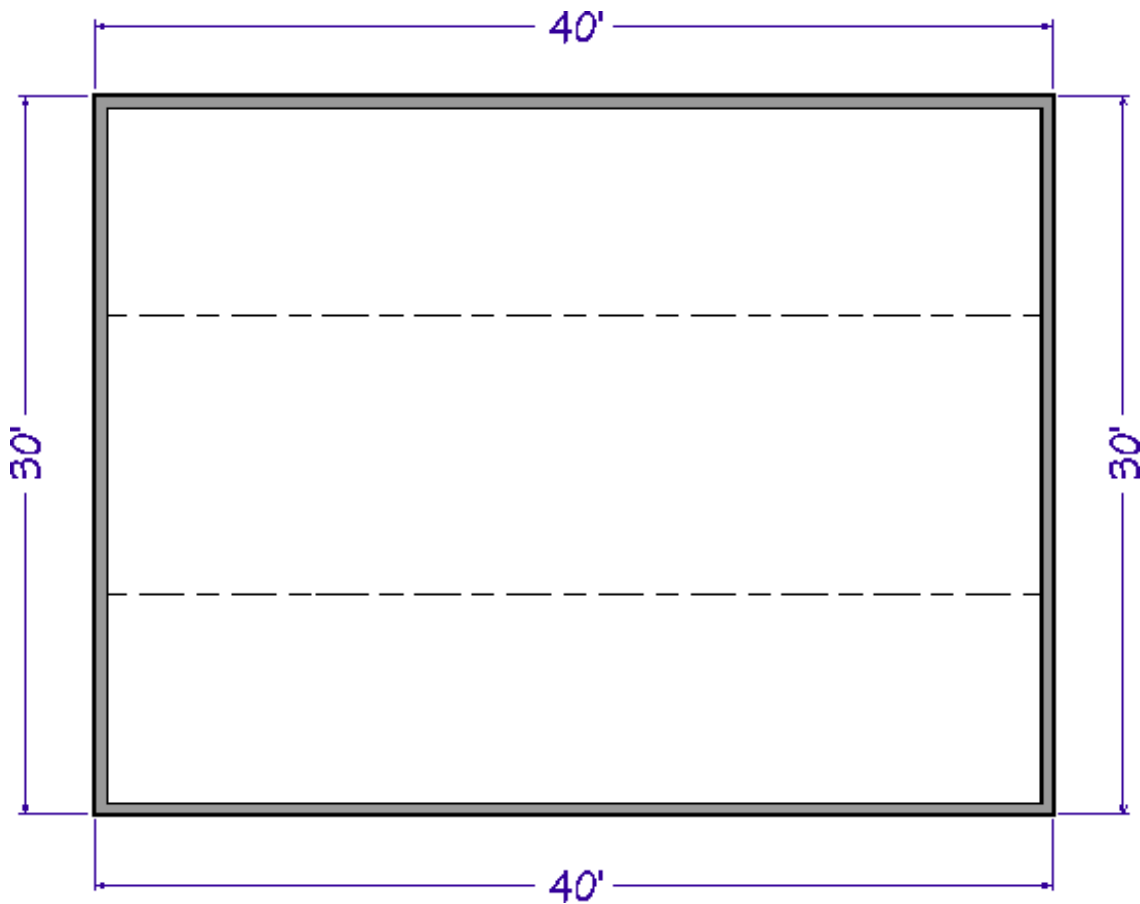
- In this example, a structure measuring **40' x 30'** is used.

3. Click the **Select Objects**  button, then click on the vertical wall on the left to select it then click the **Open Object**  edit button.






- On the **Roof** panel of the **Wall Specification** dialog, select **Full Gable Wall** and click **OK**.
 - Repeat this step with the vertical wall on the right, as well.
4. Select **Build > Floor > Build New Floor**  from the menu, and build a second floor based on the first-floor plan.
5. Select **Build > Roof > Build Roof**  from the menu, and on the **Roof** panel of the **Build Roof** dialog:
- Check the box beside **Build Roof Planes**.
 - Specify the **Pitch** of the roof to be built. In this example, a **12"** in **12"** pitch is used.
 - Check the box beside **Trusses (no Birdsmouth)**.
 - Check the box beside **Ignore Top (2nd) Floor**.
 - Click **OK** to close the dialog and build the roof as specified. It will bear on the top plates of the first floor walls.

Notice the dashed lines that now display in the 2nd-floor room area on floor plan view.

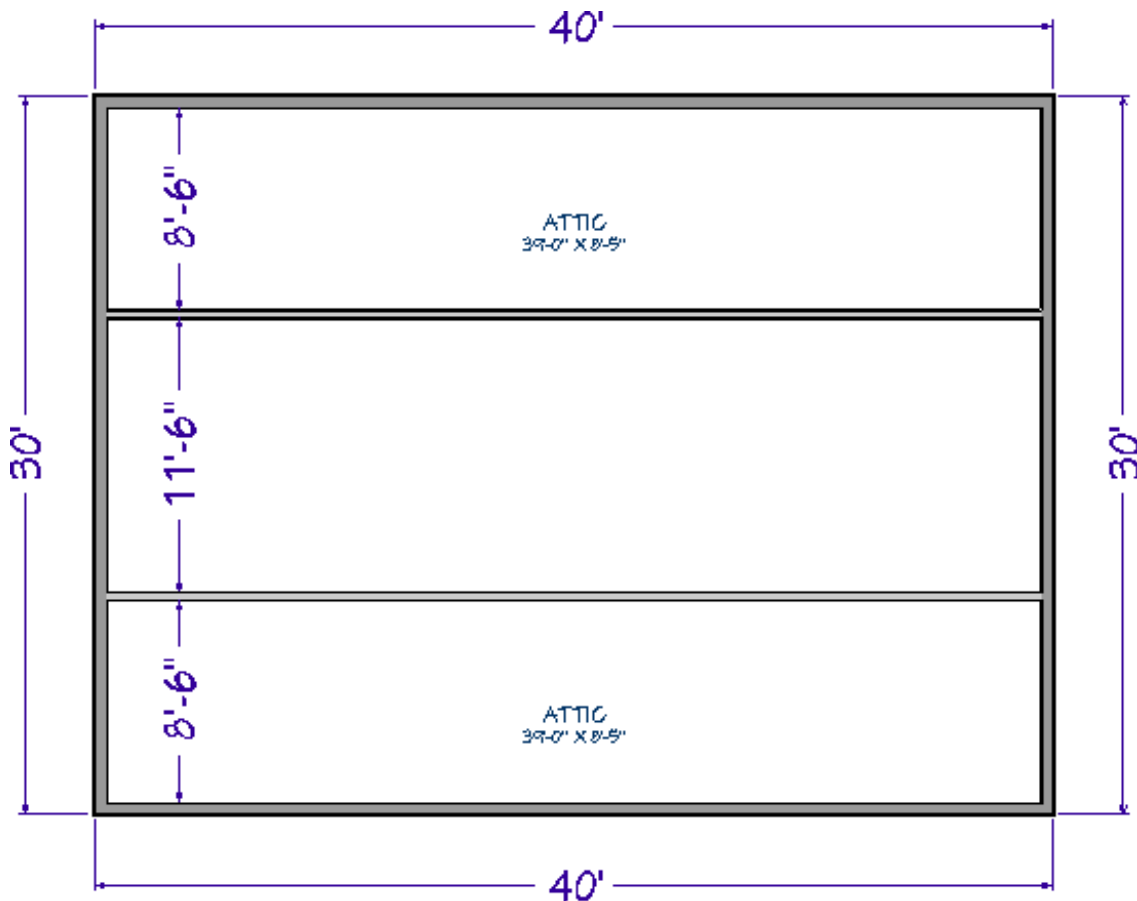


These are ceiling break lines, which represent the division between the flat, full height ceiling in the center of the room and the low, sloped ceilings on either side. The area with the flat, full height ceiling is loft area that will be accommodated by the open space at the center of your attic trusses.

6. Select **Build> Wall> Straight Interior Wall**  from the menu, then click and drag two interior walls along the ceiling break lines.
 - It's easiest to draw them near the ceiling lines, then move them into position after they are drawn.
 - If you want, you can create a custom wall type with sheetrock on only one side if the rooms with the low ceilings are to be unfinished.
7. Select each of these two interior walls and click the **Open Object**  edit button. On the **ROOF** panel of the **Wall Specification** dialog, select **Knee Wall** to specify these walls as knee walls.
8. Next, click the **Select Objects**  button, then click on one of the rooms with a low,


sloped ceiling and click the **Open Object**  edit button.

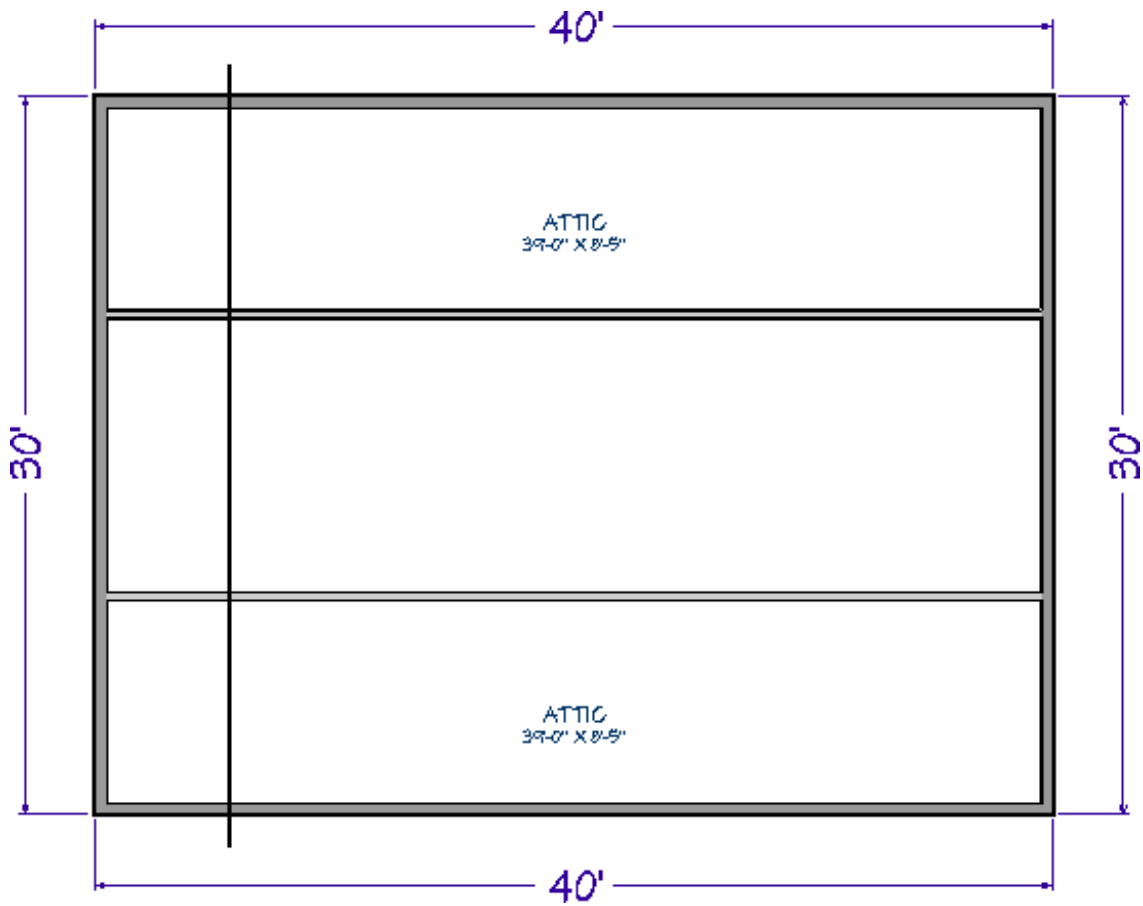
- On the **GENERAL** panel of the **Room Specification** dialog, select **Attic** from the **Room Type** drop-down list.
- Repeat this step with the room on the other side of the loft area.



The conditions necessary to produce attic trusses are now in place.


To create an attic truss

1. Select **Build** > **Framing** > **Roof Truss**  from the menu, then click and drag a line that is perpendicular to the ceiling break lines and runs from exterior wall to exterior wall.



The resulting truss will automatically extend out to the eaves.

Tip: In Chief Architect X10 and newer, you can select the truss and change its length and it will retain the new extents

2. Select the roof truss and click the **Open Object**  edit button. On the **GENERAL** panel of the **Roof Truss Specification** dialog:

Roof Truss Specification

General

Line Style

Fill Style

Materials

Label

Member Sizing

Top Chord: 3 1/2"

Bottom Chord: 11 7/8"

Webbing: 3 1/2"

Thickness: 1 1/2"

Maximum Horizontal Span

Top Chord: 60"

Bottom Chord: 75"

Options

Require Kingpost

End Truss

Energy Heel

Drop Hip Truss

Reduced Gable

Attic Truss

Sloping Flat Truss

Force Truss Rebuild

Lock Truss Envelope And Webbing

No Special Snapping

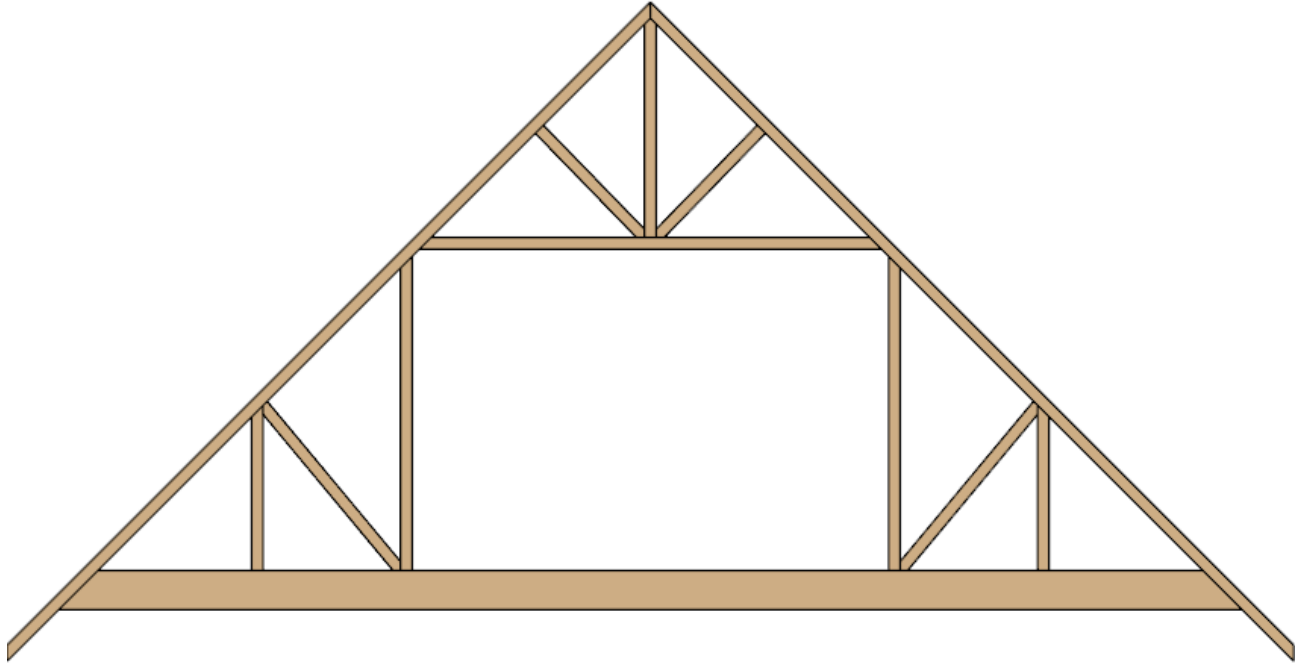
Number Style...



OK Cancel Help

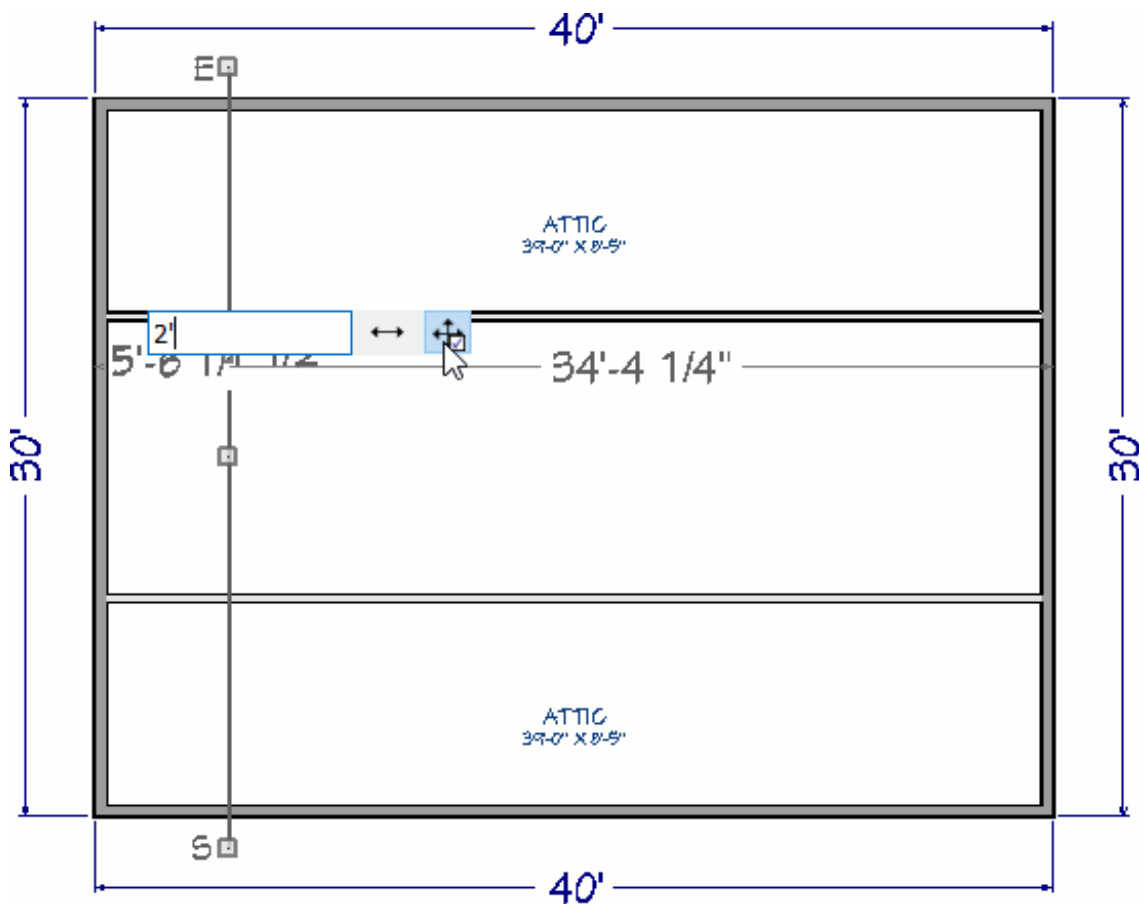
- Change the **Bottom Chord** depth to match your floor structure depth for **floor 2**. In this case, **11 7/8"** will be used.
- Check the box beside **Attic Truss**.
- Check the box beside **Force Truss Rebuild**.
- Click **OK** to close the dialog and apply your change.

Tip: At this stage, you could also use the **Lock Truss Envelope And Webbing** option as well to prevent the truss detail from changing if your roof is completed.


3. Create a **Framing Overview**  to see the results so far.

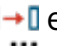



4. Select **File> Close View** to return to floor plan view.
5. Make sure **Temporary Dimensions**  are toggled on, click the **Select Objects**  button then click on the attic truss to select it.
6. Click on a temporary dimension that shows how far the truss is from either end wall, and type the distance that the first attic truss should be from the wall.



In this example, the truss is placed **2'** from the outside of the wall's framing.

7. With the truss still selected, click the **Multiple Copy**  edit button.

Note: Multiple Copy is not available in Home Designer Pro. Instead, use the **Transform/Replicate**  edit tool. As an example, if you wanted to create 6 copies all separated a certain distance from each other, you would check the **Copy** box, set the **Number of Copies** to **6**, then check the option for **Move** and set the **X Delta** to be **24"**. Negative values can also be set for each of the deltas if needed.

8. Click the **Multiple Copy Interval**  edit button to open the **Multiple Copy** dialog, specify the desired Primary Offset for All Trusses, then click **OK**.

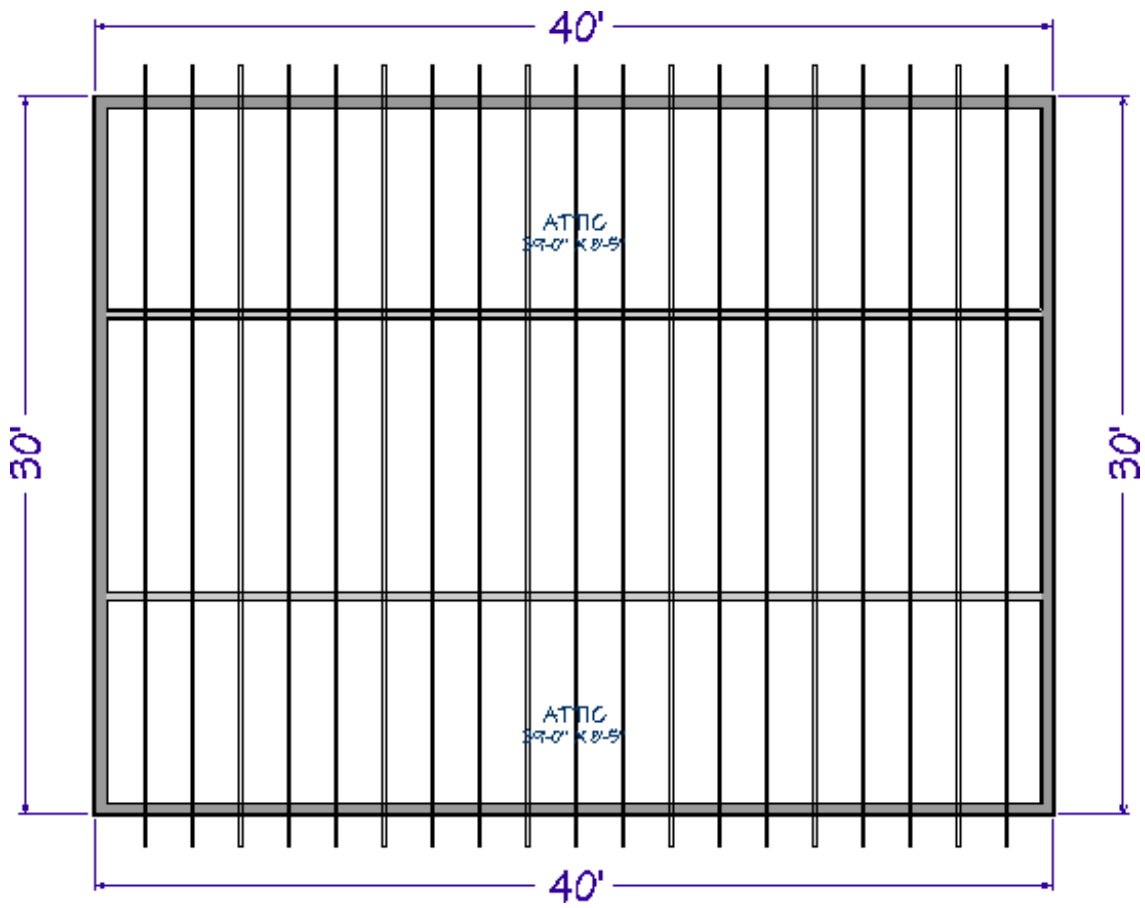
	Primary Offset	Secondary Offset (Alternate Behavior)
General Objects:	24"	24"
All Trusses:	24"	24"
Rafters:	24"	24"
Joists/Posts/Beams:	16"	16"
Wall Studs:	16"	16"
Rotation Of All Objects:	15.0°	

	Primary Number Of Copies	Secondary Copies (Alternate Behavior)
All Objects:	1	1

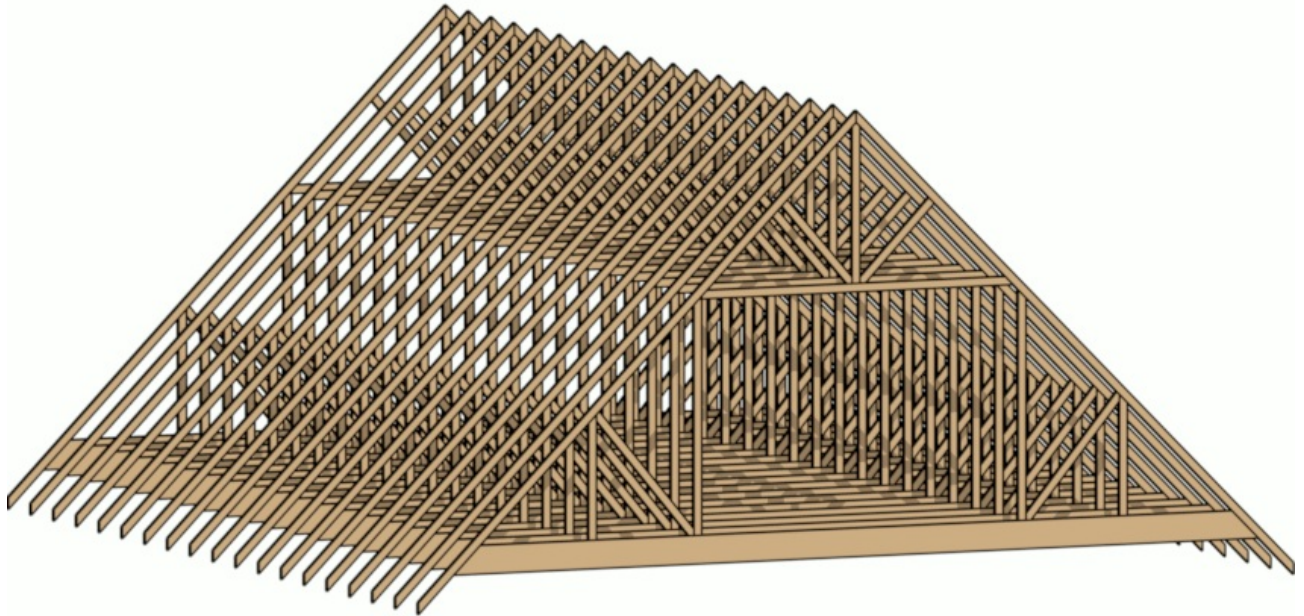
Buttons: OK, Cancel, Help

The **Primary Offset** is the interval at which trusses will be replicated when **Multiple Copy** is used. In this example, the default value of **24"** is used.

9. Click and drag the selected truss's **Move** edit handle across the structure, in the direction of the opposite end wall.
 - As you drag, the preview outlines of new trusses display at **24"** intervals.
 - When you release the mouse button, the new trusses are created.



10. Create a **Framing Overview**  to see the results.



Related Articles

 [Creating a Log Truss \(https://www.chiefarchitect.com/support/article/KB-](https://www.chiefarchitect.com/support/article/KB-)

[02781/creating-a-log-truss.html](https://www.chiefarchitect.com/support/article/KB-002781/creating-a-log-truss.html))

📌 [Creating a Vaulted Ceiling and Scissor Trusses \(/support/article/KB-00068/creating-a-vaulted-ceiling-and-scissor-trusses.html\)](https://www.chiefarchitect.com/support/article/KB-00068/creating-a-vaulted-ceiling-and-scissor-trusses.html)

📌 [Creating an Energy Heel Truss \(/support/article/KB-00032/creating-an-energy-heel-truss.html\)](https://www.chiefarchitect.com/support/article/KB-00032/creating-an-energy-heel-truss.html)

📌 [Creating Roof Trusses \(https://www.chiefarchitect.com/support/article/KB-00981/creating-roof-trusses.html\)](https://www.chiefarchitect.com/support/article/KB-00981/creating-roof-trusses.html)

📌 [General Framing Guidelines \(https://www.chiefarchitect.com/support/article/KB-00465/general-framing-guidelines.html\)](https://www.chiefarchitect.com/support/article/KB-00465/general-framing-guidelines.html)

©2019 Chief Architect, Inc. All rights reserved // [Terms of Use \(https://www.chiefarchitect.com/company/terms.html\)](https://www.chiefarchitect.com/company/terms.html) // [Privacy Policy](https://www.chiefarchitect.com/company/privacy.html)

[\(https://www.chiefarchitect.com/company/privacy.html\)](https://www.chiefarchitect.com/company/privacy.html)