

Dimensioning Cabinets in an Elevation

Reference Number: **KB-00927**

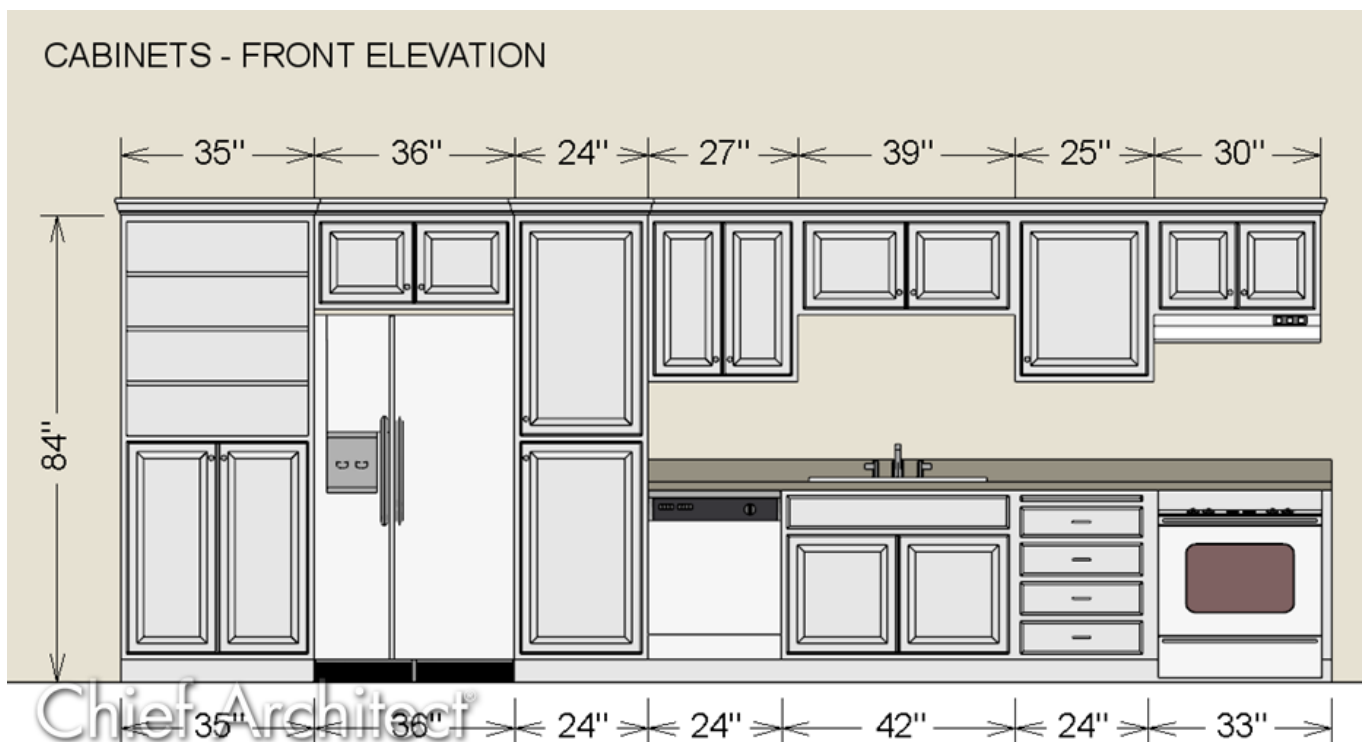
Last Modified: **September 13, 2023**

The information in this article applies to:



QUESTION

How can I create a detailed elevation view of my cabinets?



ANSWER

Create a cabinet elevation by using one of the elevation camera tools and then use manually generated dimensions.

To create an elevation


1. Select **3D> Create Camera View> Wall Elevation** , then click and drag towards your cabinets in your 2D plan view to generate an elevation of that wall.

In Home Designer Pro, navigate to **3D> Create Orthographic View> Wall Elevation**  instead.

You can also create a Cross Section/Elevation view that will span all floor levels of the plan if you wish. This can be done by navigating to **3D> Create Camera View> Cross Section/Elevation** in Home Designer Architectural 2021 and newer, or **3D> Create Orthographic View> Cross Section/Elevation** in Home Designer Pro.

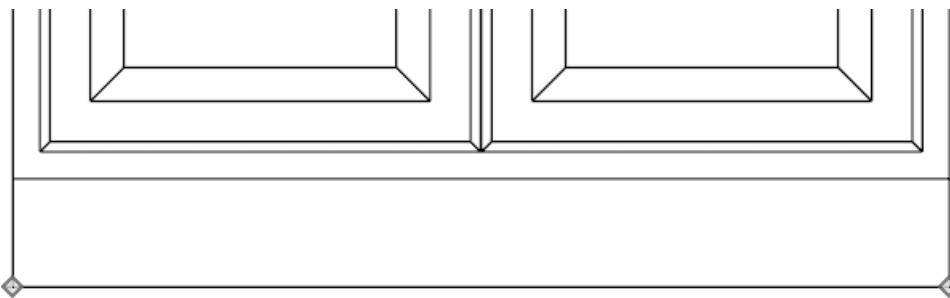
2. To save this elevation view with the plan, select **3D> Save Active Camera**  from the menu.

To dimension cabinets in an elevation

1. While in the elevation, navigate to **CAD> Dimensions> Manual Dimension** , then click and drag out a dimension line across the cabinets that you want dimensioned.

To learn more about the Dimension tools that are available in Home Designer, please see the "Using the Dimension Tools" resource in [Related Articles](#) section below.

2. You can now select the dimension line that was just generated and modify it further to your liking.




- The **Move** handle is square-shaped and is located where you clicked to select the dimension line. This handle is used to move the entire dimension line, including any subsections, perpendicular to itself.
- **Extension Line End** handles are diamond-shaped and are positioned at the point that each extension line

locates. Click and drag these handles to move or delete extension lines from a dimension line. Note that each extension line is numbered and will display as such when the dimension line is selected.

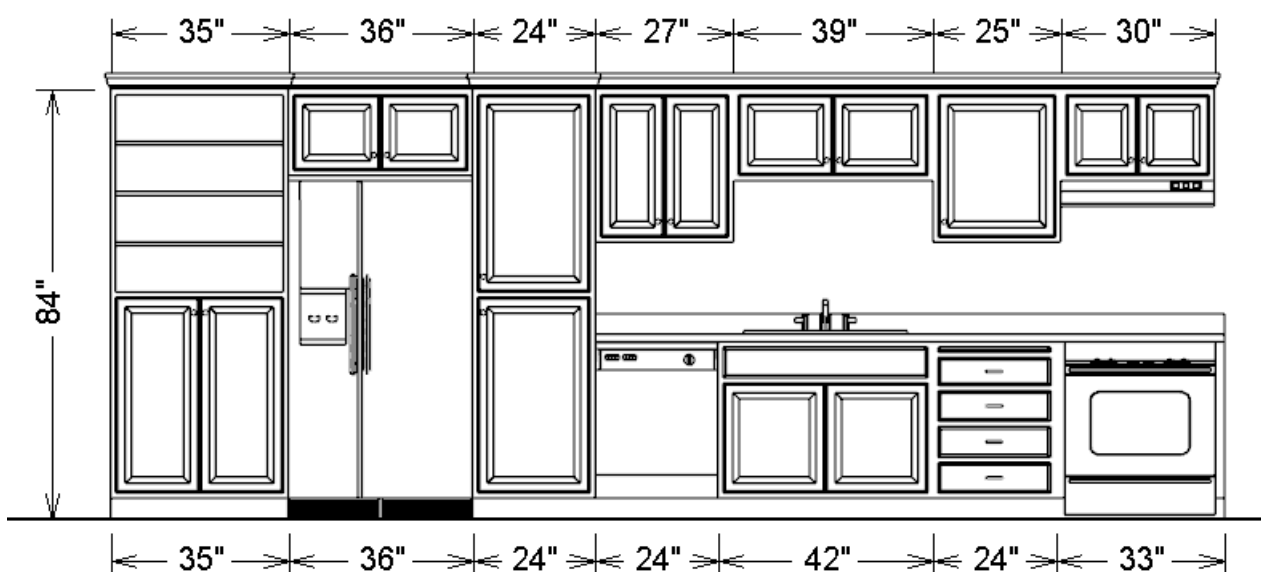
- The **Add Extension Line** handle is diamond-shaped and displays next to the Move handle. These handles are used to add extension lines to the selected dimension line. Extension lines added in this manner are able to locate marks that the dimension line might not locate as it was being drawn.
- In Home Designer Pro, each dimension number along the dimension string will have a smaller, square **Move** handle that allows you to move the number to your desired location. The pointer changes to a four-headed arrow when moved over this handle, allowing you to move the number in any direction.

Note: By default, you will likely notice that the value of this cabinet dimension is in feet and inches. If you would like to change the format of dimensions to be just inches, please see the "Displaying Dimensions in Inches" resource in the [Related Articles](#) (<https://kb.chiefarchitect.com/admin/index.php?/front/#Related>) section below.

If you're using Home Designer Pro, you can specify what objects manual dimensions locate within the Dimension Defaults. To learn more, please see the "Changing Your Dimension Settings" resource, which is also located in the [Related Articles](#) section.

3. Continue to add as many dimensions, as needed
4. You can also use the **Text T** tools to add notes in elevations.
5. If you would prefer to have a black and white elevation, you can select **View > Color**  from the menu to turn off the display of color in the view.

CABINETS - FRONT ELEVATION



6. Once you're finished, navigate to **3D > Save Active Camera**  once again.

Related Articles

- 📄 [Changing Your Dimension Settings \(/support/article/KB-00491/changing-your-dimension-settings.html\)](/support/article/KB-00491/changing-your-dimension-settings.html)
- 📄 [Creating a Cross Section Detail in Home Designer Pro \(/support/article/KB-00439/creating-a-cross-section-detail-in-home-designer-pro.html\)](/support/article/KB-00439/creating-a-cross-section-detail-in-home-designer-pro.html)
- 📄 [Creating an Elevation View of Wall Framing in Home Designer Pro \(/support/article/KB-01188/creating-an-elevation-view-of-wall-framing-in-home-designer-pro.html\)](/support/article/KB-01188/creating-an-elevation-view-of-wall-framing-in-home-designer-pro.html)
- 📄 [Displaying Dimensions in Inches \(/support/article/KB-01018/displaying-dimensions-in-inches.html\)](/support/article/KB-01018/displaying-dimensions-in-inches.html)
- 📄 [Using the Dimension Tools \(/support/article/KB-01002/using-the-dimension-tools.html\)](/support/article/KB-01002/using-the-dimension-tools.html)