

Adding a Belly Band

Reference Number: **KB-00891**

Last Modified: **April 1, 2016**

The information in this article applies to:



QUESTION



I want to create a simple belly band, mid-section trim, or circumferential siding trim around a structure that I am designing. How do I do that?

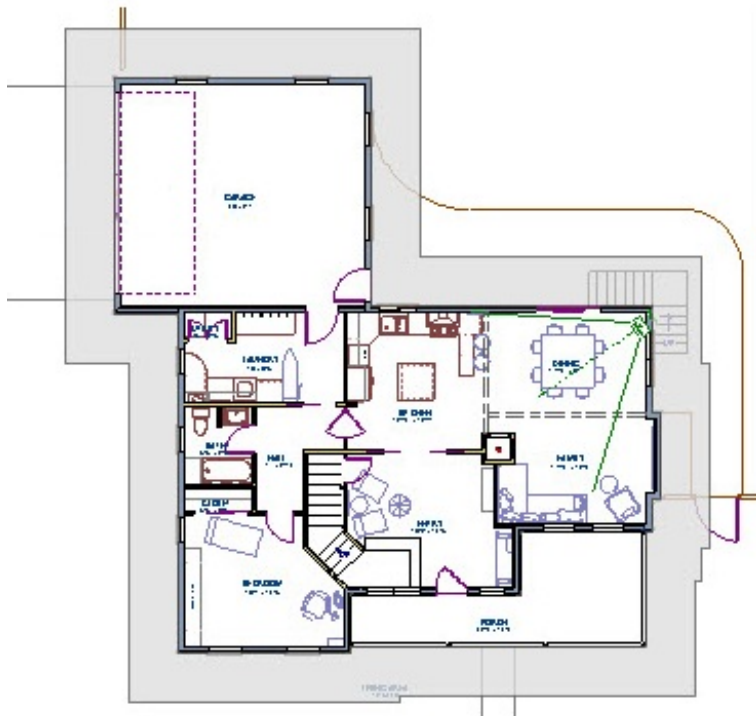



ANSWER

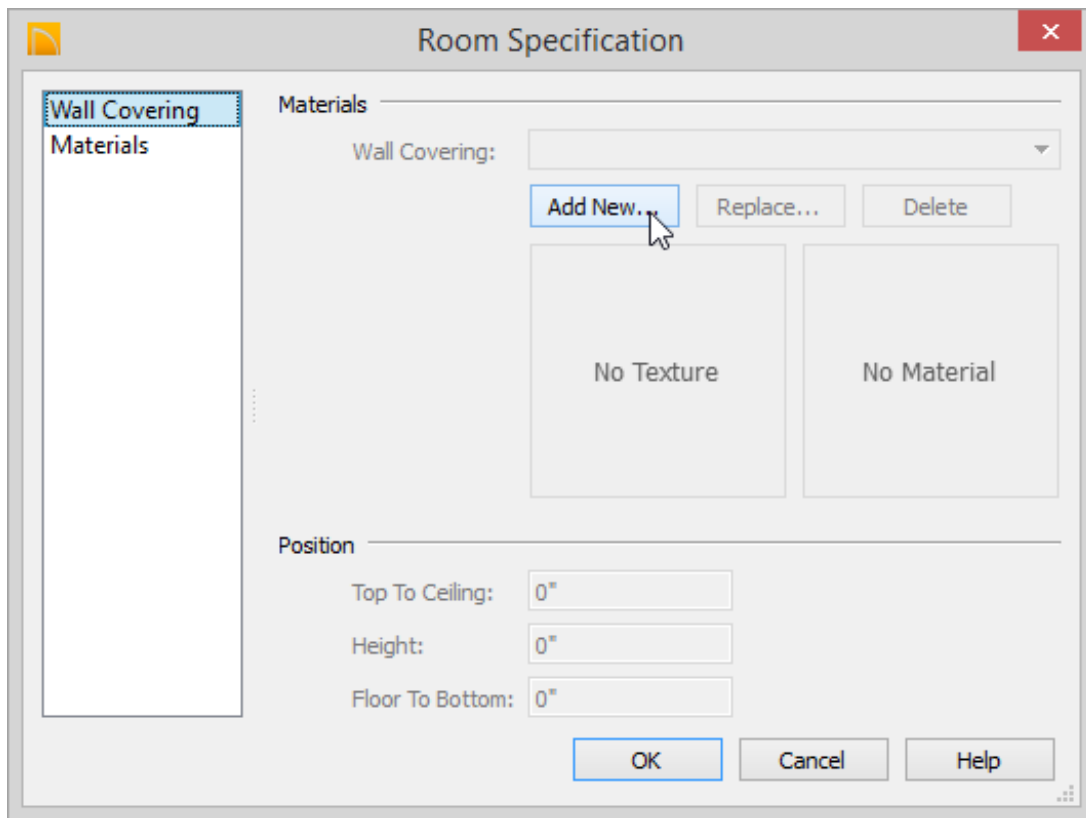
Creating a simple belly band is easy using the Wall Covering panel in the Exterior Room Specification dialog.


To create a basic Wall Covering belly band

1. First, launch Home Designer, then **Open**  the plan in which you want to create the belly band.
2. Using the **Select Objects**  tool, click just outside an exterior wall to select the Exterior room of the house.



- When the exterior room is selected, a highlighted band around the plan's exterior displays, and this band represents the selection area for the Exterior Room.
3. Click on the **Open Object**  edit tool to display the Exterior Room's **Room Specification** dialog and select the **WALL COVERING** panel.



- Click the **Add New** button to display the **Select Material** dialog.
 - Click the arrow ▶ sign next to **Home Designer Core Catalogs** and then once more on **Materials**.
 - Locate and click to select the material that you want to use for your belly band.
 - Click **OK** to close the **Select Material** dialog and Click **OK** to close the Room Specification Dialog to apply the chosen material as a wall covering.
 - Set the **Top to Ceiling**, **Width**, and **Floor to Bottom** values that you want for your belly band.
4. Once you have finished entering in these values, click **OK** to apply the wall covering.
5. Finally, take a 3D **Camera**  view to see the results.

[📄 Applying Exterior Decorative Details \(/support/article/KB-00902/applying-exterior-decorative-details.html\)](/support/article/KB-00902/applying-exterior-decorative-details.html)

[208-292-3400 \(tel:+1-208-292-3400\)](tel:+1-208-292-3400) © 2003–2017 Chief Architect, Inc.

[Terms of Use \(https://www.chiefarchitect.com/company/terms.html\)](https://www.chiefarchitect.com/company/terms.html)

[Privacy Policy \(https://www.chiefarchitect.com/company/privacy.html\)](https://www.chiefarchitect.com/company/privacy.html)