

Creating a Screen Porch

Reference Number: **KB-00748**

Last Modified: **July 14, 2021**

The information in this article applies to:





QUESTION

I would like to add a screened-in porch to my plan. How can I do this?

ANSWER

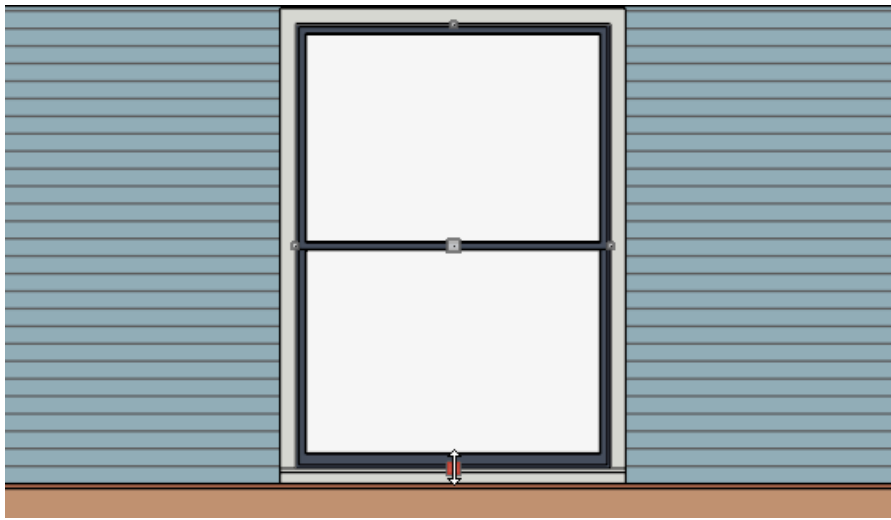
Screened panels can be created by applying a custom material to the glass in a window and then using copies of this window to form a porch.



To create a screen porch

1. Select **Build> Window> Window**  and place a window into one of the walls of your porch.
2. Select **3D> Create Camera View> Cross Section/Elevation**  and take an elevation of the screen porch wall.

In Home Designer Pro, navigate to **3D> Create Orthographic View> Cross Section/Elevation**  instead.

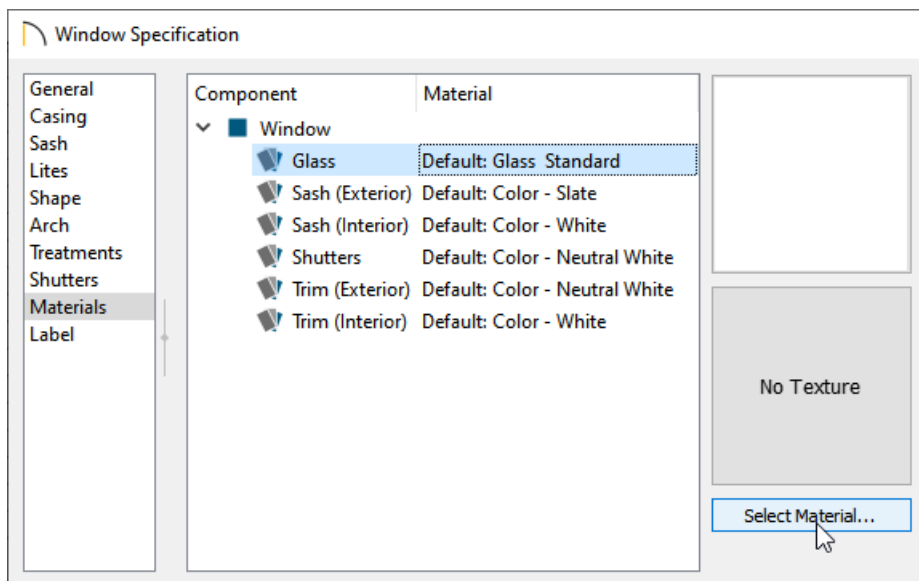
3. In the newly generated view, select your window and using the edit handles:
 - Adjust the top height of the window to match the top of your wall.
 - Adjust the bottom height of the window to the height where you want the bottom of your screen to start.



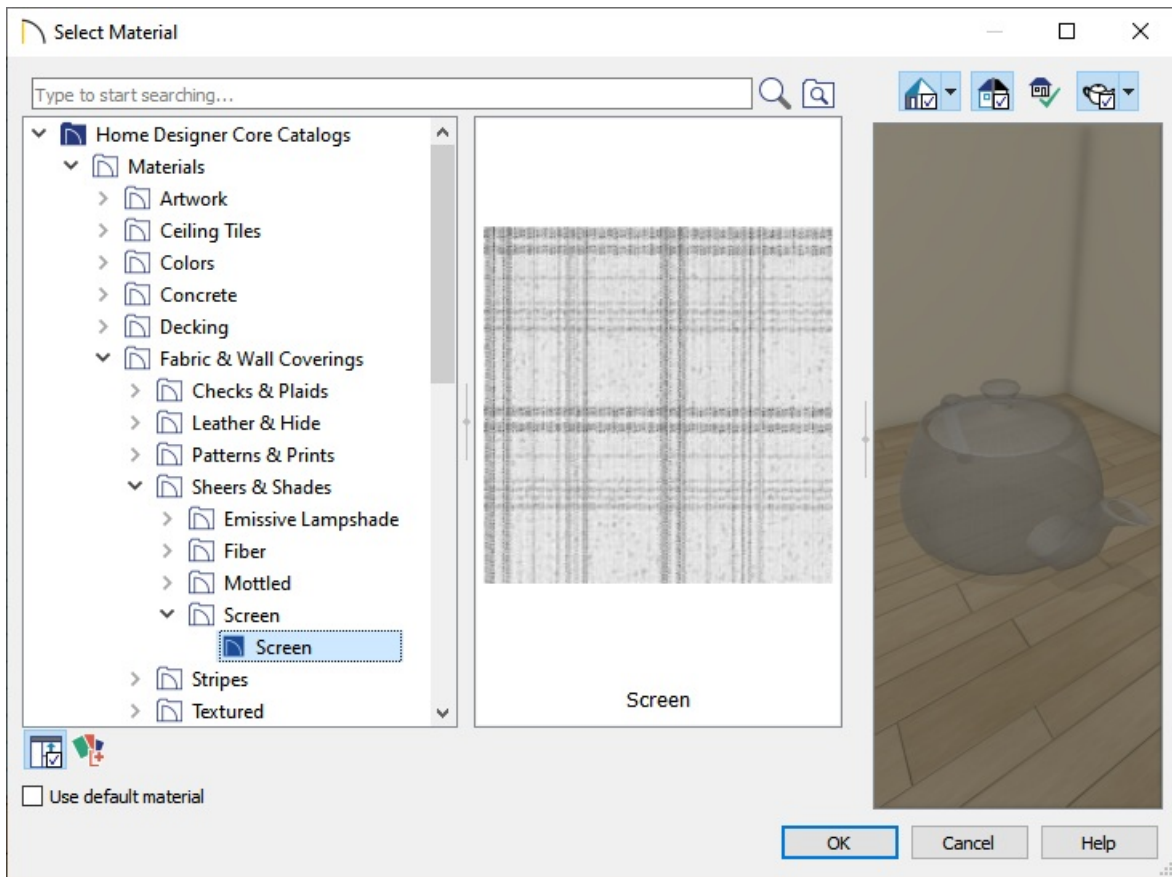
4. Using the **Select Objects**  tool, select the window and click the **Open Object**  edit button.
5. On the **GENERAL** panel of the **Window Specification** dialog that opens, change the Window Type to **Fixed Glass**.
6. Access the **CASING** and **SASH** panels to adjust the casing, sill, apron, frame, and sash properties for the window.

In Home Designer Pro, access the dedicated **SILL** and **FRAME** panels to modify the sill, apron, and frame properties.


7. Select the **MATERIALS** panel, select the **Glass** component, then click on the **Select Material** button.



8. In the **Select Material** dialog that opens, navigate to **Home Designer Core Catalogs> Materials> Fabric & Wall Coverings> Sheers & Shades> Screen> Screen**, select it, then click **OK**.



9. Make any other adjustments to the window, such as to the LITES, then click **OK** once more to close the dialog.

You can now create as many copies of this window as needed using the **Copy/Paste**  edit button.