



# Creating a Screen Porch in Home Designer

Reference Number: **KB-00748**

Last Modified: **August 22, 2025**

This article also applies to the following legacy products:

Pro | Architectural | Suite

## QUESTION


I would like to add a screened-in porch to my plan. How can I do this?





## ANSWER

Screened panels can be created by applying a mesh material to the glass component in a window and then using copies of this window to form a porch.

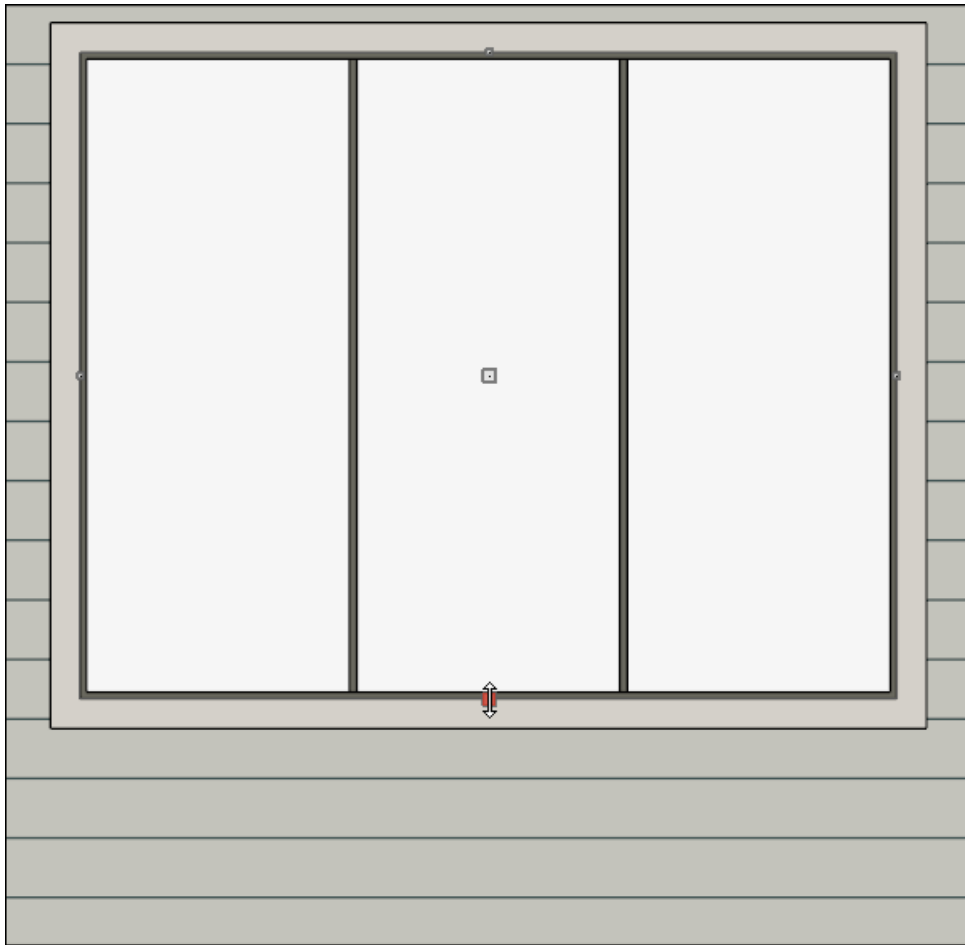
### To create a screen porch



1. Select **Build> Window> Window**  and place a window into one of the walls of your porch.

2. Navigate to **3D> Create Orthographic View> Cross Section/Elevation**  and create a cross section/elevation view of the screen porch wall.

In legacy Home Designer versions, navigate to **3D> Create Camera View> Cross Section/Elevation**  instead.

3. In the newly generated view, select your window and using the edit handles:
  - Adjust the top height of the window to match the top of your wall.
  - Adjust the bottom height of the window to the height where you want the bottom of your screen to start.

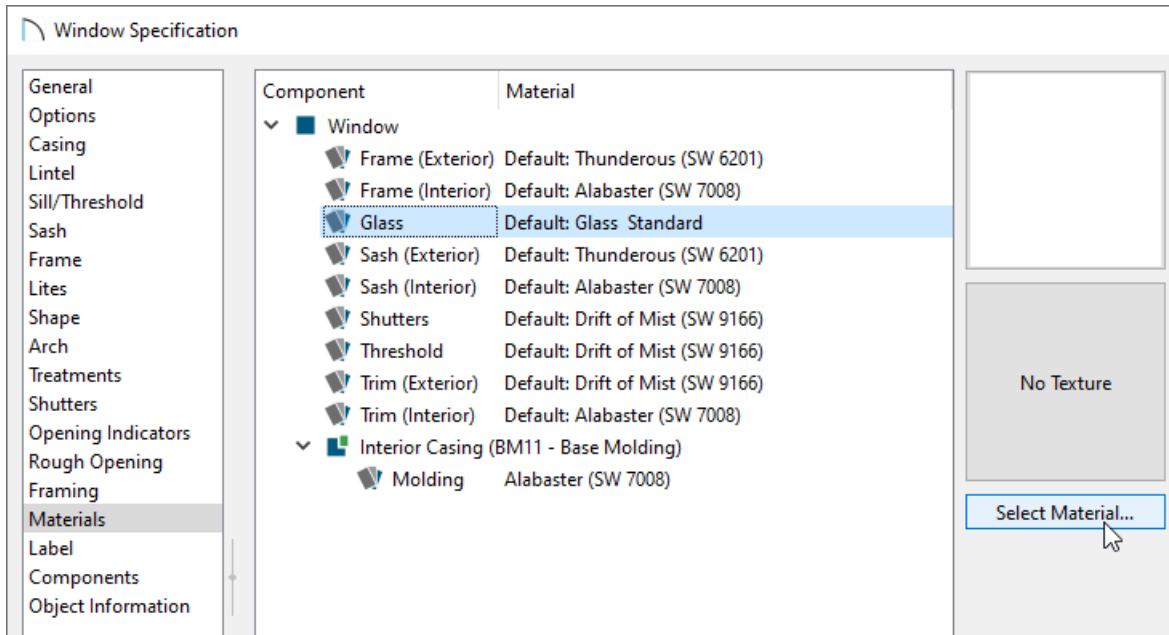


4. Using the **Select Objects**  tool, select the window and click the **Open Object**  edit button.
5. On the **GENERAL** panel of the **Window Specification** dialog that opens, change the Window Type to **Fixed Glass**.
6. Access the **CASING**, **LINTEL\***, **SILL/THRESHOLD\***, **SASH**, **FRAME\***, and **LITES** panels to adjust these various components associated with the window.

*\*Available in Home Designer Pro and Home Designer 2026 and newer. A limited selection of sill and threshold*

settings are located on the *CASING* panel in legacy versions.

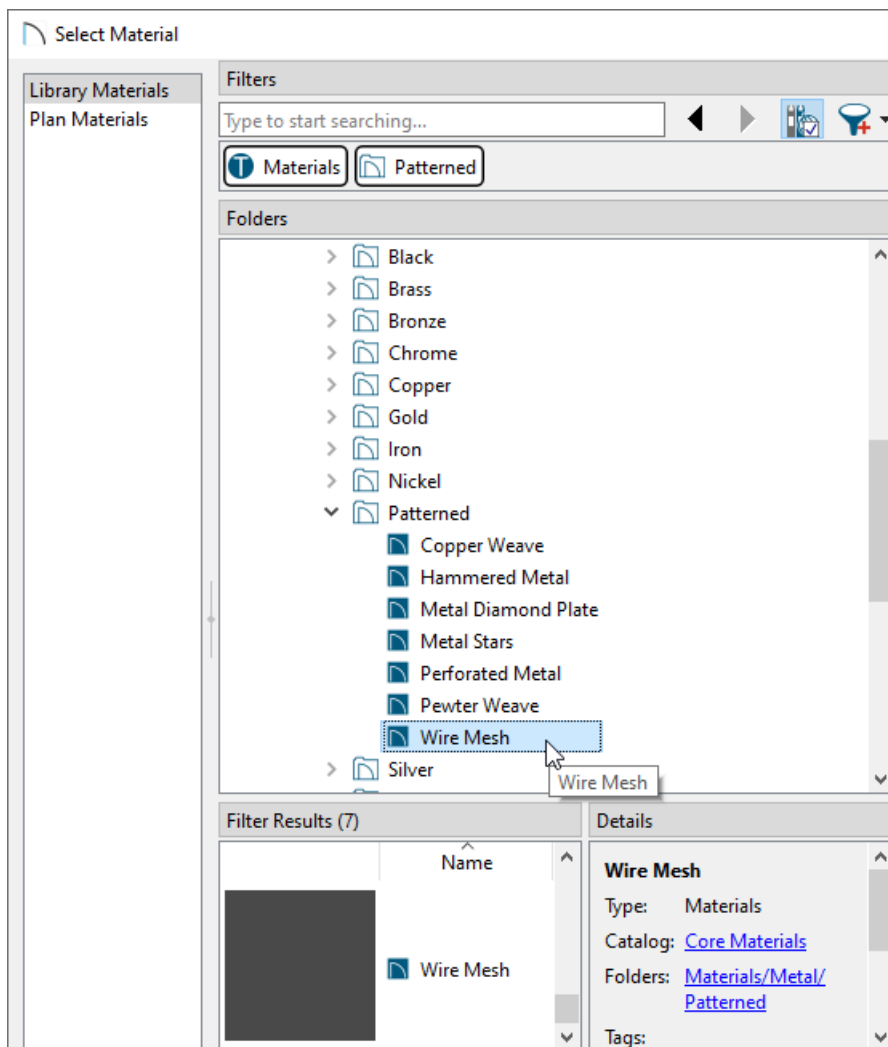
7. Select the **MATERIALS** panel, select the **Glass** component, then click on the **Select Material** button.



8. In the **Select Material** dialog that opens, navigate to **Core Catalogs> Materials> Metal> Patterned> Wire Mesh**, select it, then click **OK**.

In Home Designer 2025 and prior versions, navigate to **Home Designer Core Catalogs> Materials> Fabric & Wall Coverings> Sheers & Shades> Screen> Screen** instead.

Additional mesh materials, such as Square Mesh, can be located in the [Materials Wire and Lattice](https://www.chiefarchitect.com/3d-library/index.php?r=site/detail/961) (<https://www.chiefarchitect.com/3d-library/index.php?r=site/detail/961>) bonus catalog. For more information on obtaining additional catalogs, please see the [Related Articles](#) section below.



9. Make any other adjustments to the window, then click **OK** once more to close the dialog.

You can now create as many copies of this window as needed using the various edit tools.

Additional catalogs can be found in the [3D Library \(https://www.chiefarchitect.com/3d-library/index.php?r=site/library&reset=true\)](https://www.chiefarchitect.com/3d-library/index.php?r=site/library&reset=true) for furnishing your porch room. For more information on obtaining bonus library content ,please see the [Related Articles](#) section.

#### Related Articles

- 📄 [Creating a Mulled Window \(/support/article/KB-00759/creating-a-mulled-window.html\)](/support/article/KB-00759/creating-a-mulled-window.html)
- 📄 [Downloading and Updating Library Catalogs \(/support/article/KB-00048/downloading-and-updating-library-catalogs.html\)](/support/article/KB-00048/downloading-and-updating-library-catalogs.html)
- 📄 [Editing the Shape of a Window \(/support/article/KB-01024/editing-the-shape-of-a-window.html\)](/support/article/KB-01024/editing-the-shape-of-a-window.html)

