



Displaying Door and Window Opening Indicators in Home Designer

Reference Number: **KB-00537**

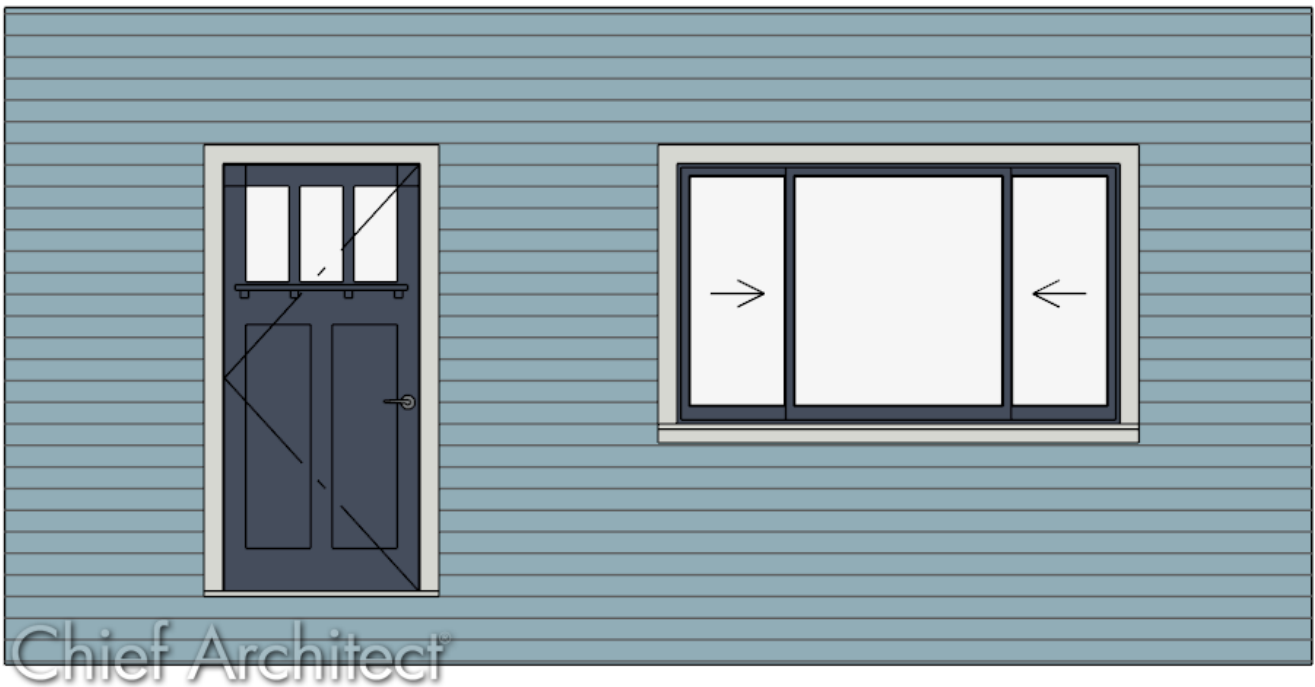
Last Modified: **October 16, 2025**

This article also applies to the following legacy products:

Pro

QUESTION

How do I display door and window opening indicators in an elevation view?






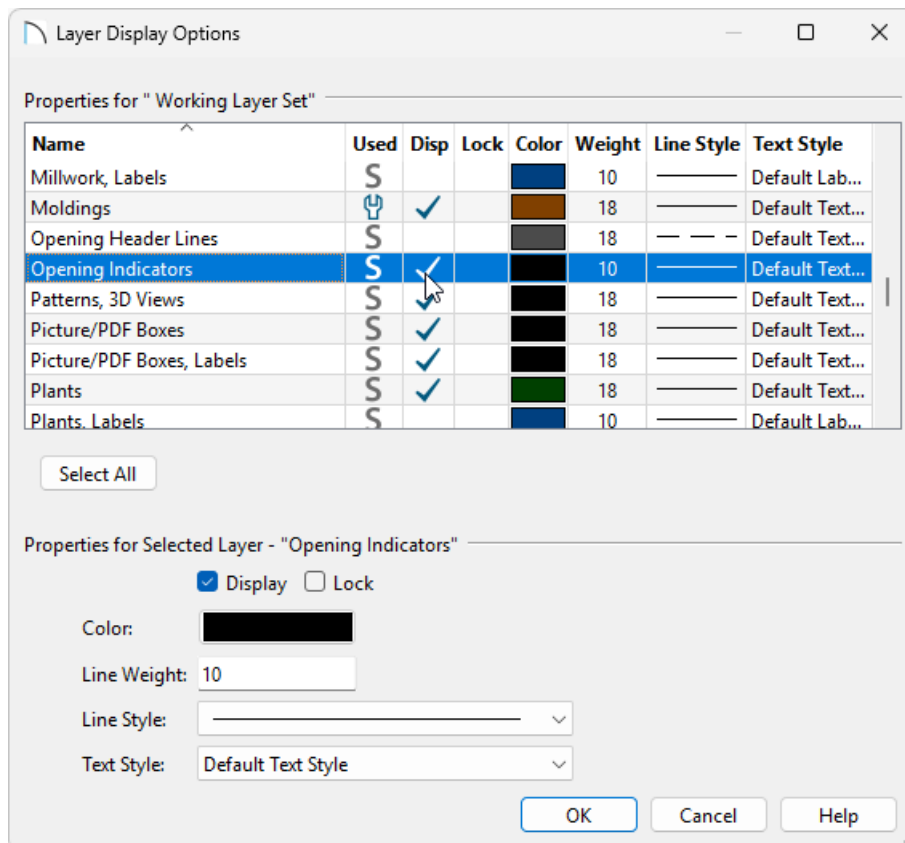
ANSWER



In Home Designer Pro, as well as Home Designer 2026 and newer, opening indicators can be displayed when using the Vector View rendering technique by toggling the "Opening Indicators" layer on in the Layer Display Options.

Options relating to opening indicators can be defined on the Opening Indicators panel of the Window or Door Specification dialog.

To display opening indicators for doors and windows

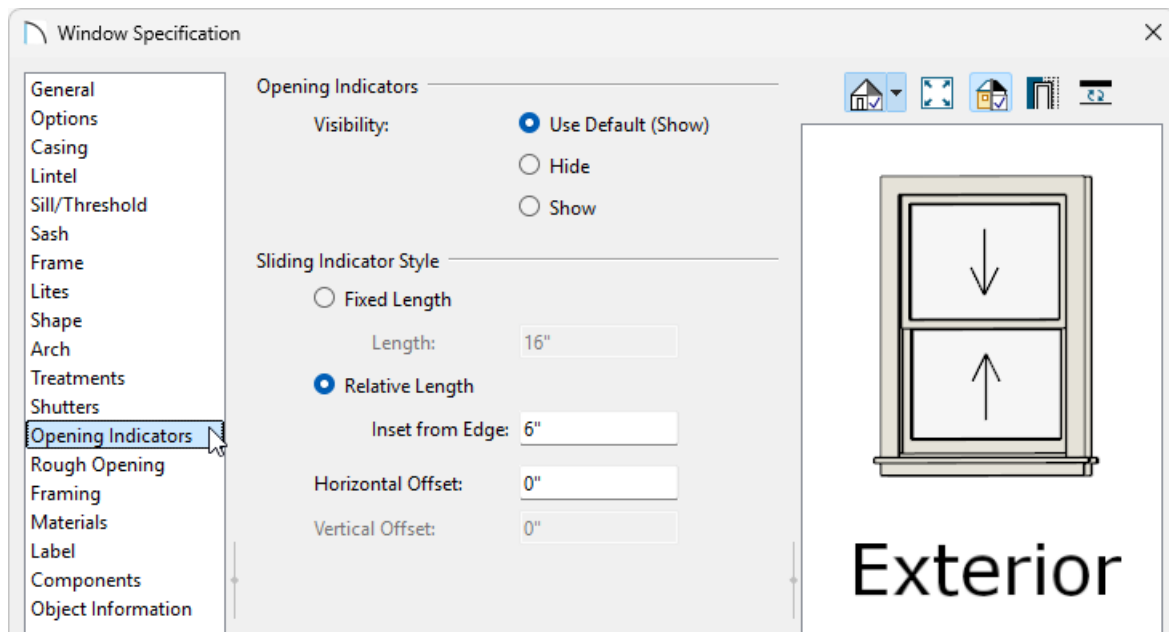
1. From the menu, select **3D> Create Orthographic View** , select an appropriate tool, such as the **Cross Section/Elevation** , then click-and-drag towards a wall containing windows and/or doors.
2. In the view that generates, navigate to **Tools> Display Options**  to display the **Layer Display Options** dialog for this particular view.
3. Locate the the "Opening Indicators" layer, place a check in the **Disp** column or **Display** checkbox, change the **Color** of the layer, if desired, then click **OK**.



- For additional control in Home Designer Pro, Home Designer 2026 and newer versions, select a window or door using the **Select Objects**  tool, then click the **Open Object**  edit tool.

You can also make the following modifications within the Default Settings for all windows in a given plan, or for specific door types.

- On the **OPENING INDICATORS** panel of the **Window** or **Door Specification** dialog that displays:



- Adjust the Visibility of the opening indicator. Choose between **Use Default**, **Hide**, or **Show**.
- Choose between **Fixed Length** or **Relative Length** for the Sliding Indicator Style.

The style options are available for sliding, pocket, barn, and garage doors, as well as single hung, double hung, and sliding windows. Sliding indicator arrows display centered over all movable door panel(s) or window component(s).


To learn more about the options underneath each style option, select the Help button at the bottom of the dialog to open your program's documentation.


- Once all of your desired changes have been made, click **OK**.

By default, opening indicators for hinged openings will point to the hinge side. To change this, you can uncheck the "Openings Indicators Point to

Hinge Side" checkbox located in the General Plan Defaults in Home Designer Pro, Home Designer 2026 or newer. This checkbox can also be found on the Architectural panel of the Preferences dialog.

Related Articles

 [Changing the Display of Object Labels \(/support/article/KB-00504/changing-the-display-of-object-labels.html\)](/support/article/KB-00504/changing-the-display-of-object-labels.html)

 [Changing the Hinge Side or Swing Direction of Doors \(/support/article/KB-00294/changing-the-hinge-side-or-swing-direction-of-doors.html\)](/support/article/KB-00294/changing-the-hinge-side-or-swing-direction-of-doors.html)