

Changing the Display of Object Labels

Reference Number: **KB-00504**

Last Modified: **October 6, 2021**

The information in this article applies to:




QUESTION

My object labels are not visible. How can I display these labels, and once visible, how can I change the font, size, and color of the label text?

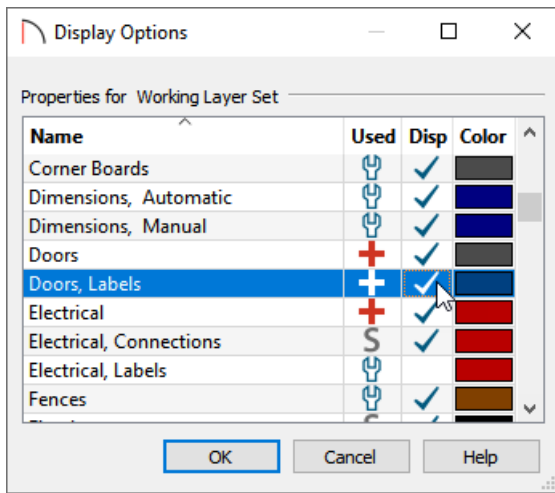
ANSWER

Labels can be toggled on and off using the Display Options. To adjust the font, size, color, and other properties associated with object labels, access the Default Settings.

To toggle the display of object labels

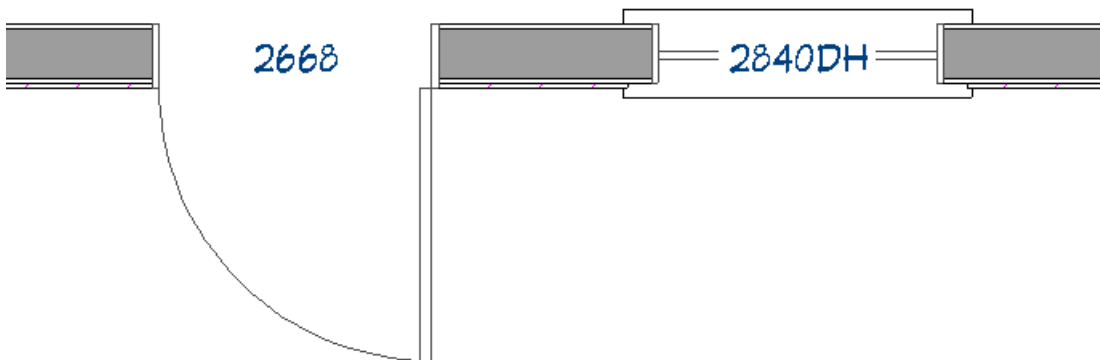
1. While in the 2D floor plan view, select **Tools > Display Options** .
2. Locate the layers that contain the word "Labels" in the name, then put a check in the **Disp** column to show these layers in the current view.

In this example, we have displayed the "Doors, Labels" and "Windows, Labels" layers.



3. Click **OK** to confirm the changes.

4. Labels for any layers that you've set to be displayed will now be visible in the view.



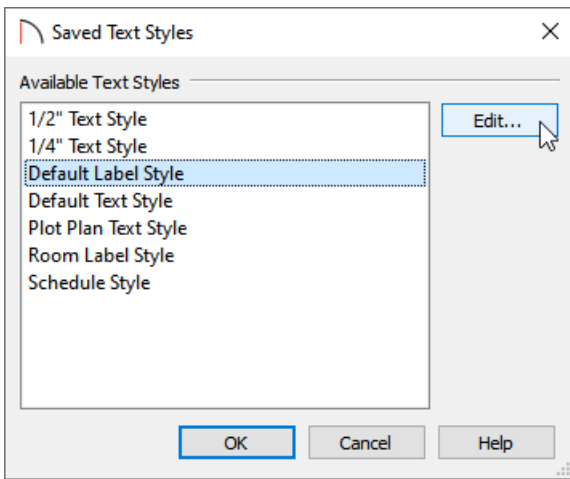
To adjust the font, size, and color of labels

1. Select **Edit > Default Settings** .

2. In the **Default Settings** dialog, click on the **Text Styles** option, then click the **Edit** button.

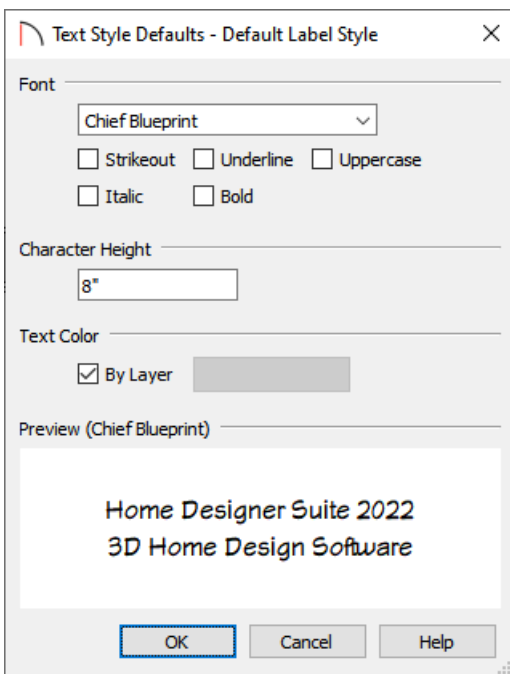
In Home Designer Pro, expand the **Text, Callouts and Markers** category located in the Default Settings to access **Text Styles**.

3. In the **Saved Text Style Defaults** dialog, select the **Default Label Style**, then click the **Edit** button.



4. In the **Text Style Defaults - Default Label Style** dialog, you can adjust the display of text labels, including the **Font, Character Height,** and **Text Color.**

In this example, we have increased the Character Height to 8".



5. Click **OK** to apply this change, then click **OK** again, then **Done** to exit out of all of the dialogs.
6. All labels in the plan will update according to the changes that were made.