

Creating a Two Story Entry

Reference Number: **KB-00502**

Last Modified: **September 6, 2022**

The information in this article applies to:



QUESTION

What is the best way to draw a two-story grand entry, or foyer?




Chief Architect®

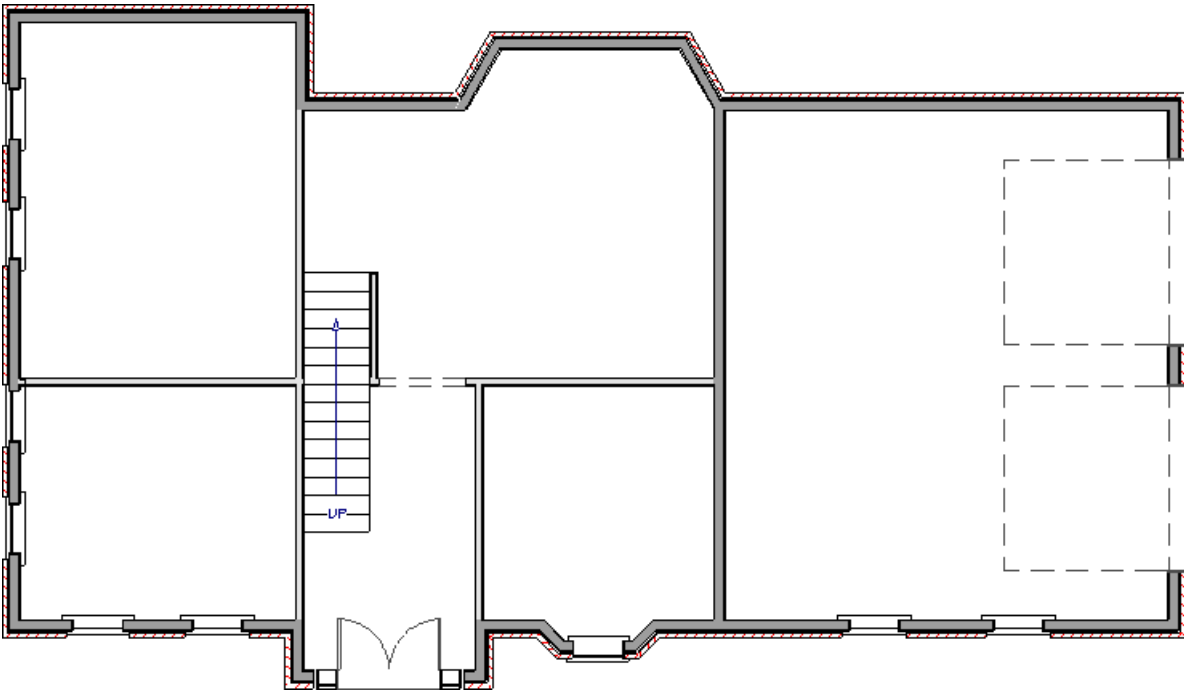
ANSWER


In Home Designer, a two story entry can easily be created using a couple of different techniques.

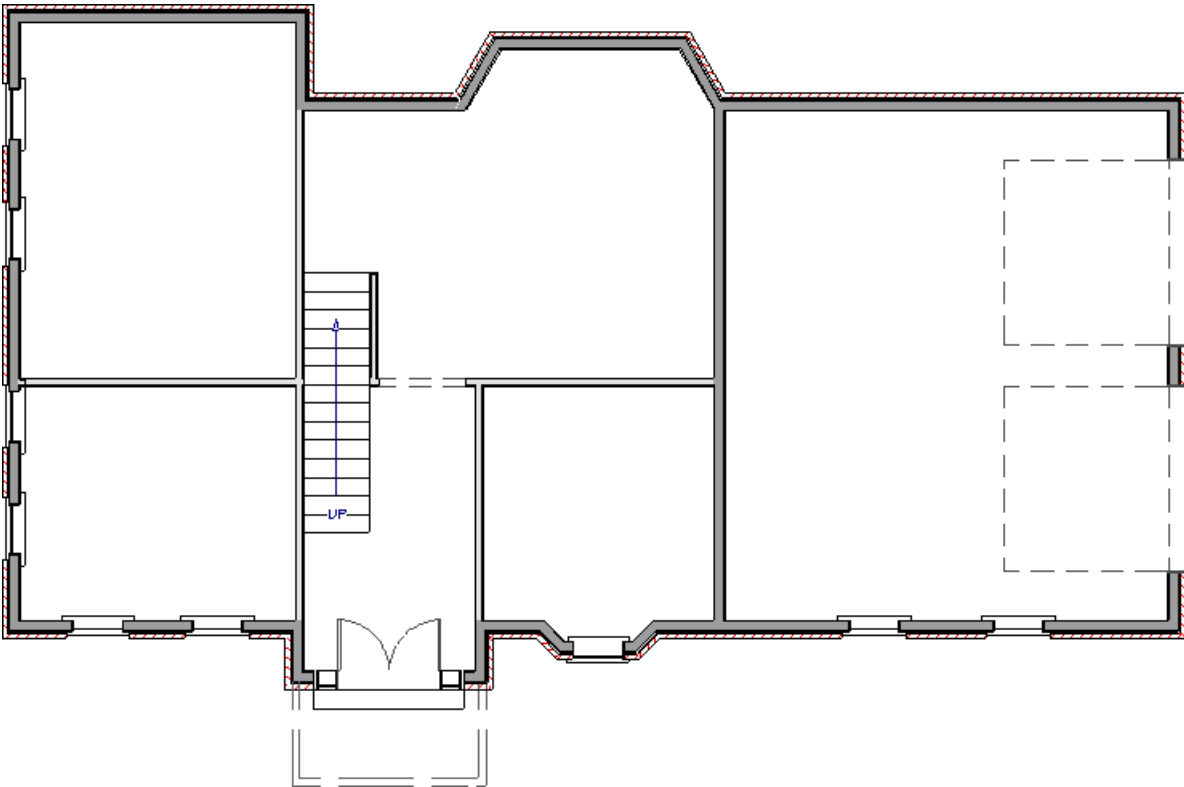
To create a two-story covered entry



1. **Open**  the Home Designer plan in which you would like to create a two-story entry area.

In this example, the entry area is also a bumpout.




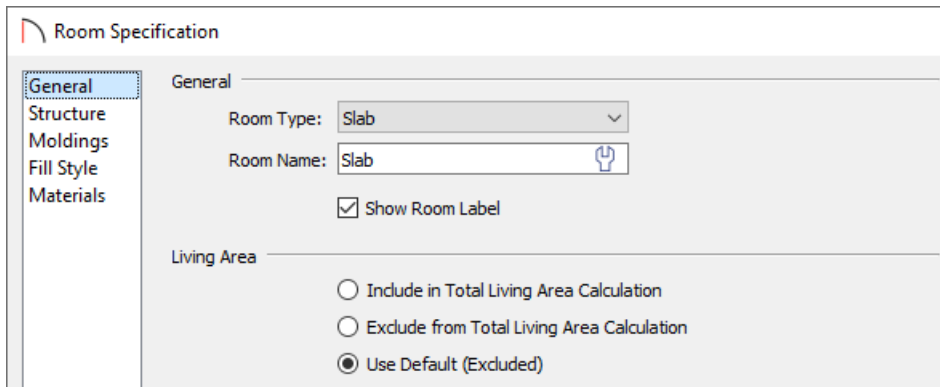
2. Select **Build> Wall> Room Divider**  from the menu, then click and drag to enclose a small stoop area outside of the front door.



3. If you would like a gable roof over your entry, select the room divider wall using the **Select Objects**  tool, then click the **Change to Gable Wall(s)**  edit button to convert the hip wall to a gable.

You can also select the **Full Gable Wall** setting on the **ROOF** panel of the **Railing Specification** dialog.

4. Click in the room defined by the room divider walls and click the **Open Object**  edit button to open the **Room Specification** dialog.



- On the **GENERAL** panel, select Slab from the **Room Type** drop-down list.
- On the **STRUCTURE** panel, increase the **Ceiling** height.

In this example, the same Ceiling height used by the rooms on Floor 2 of the plan is used.

- Also on the **STRUCTURE** panel, specify a lowered **Floor** height, if desired.


In this example, -12" is used.

- Click **OK** to close the dialog and apply your changes.

5. Select **Build> Roof> Build Roof**  from the menu and in the **Build Roof** dialog:

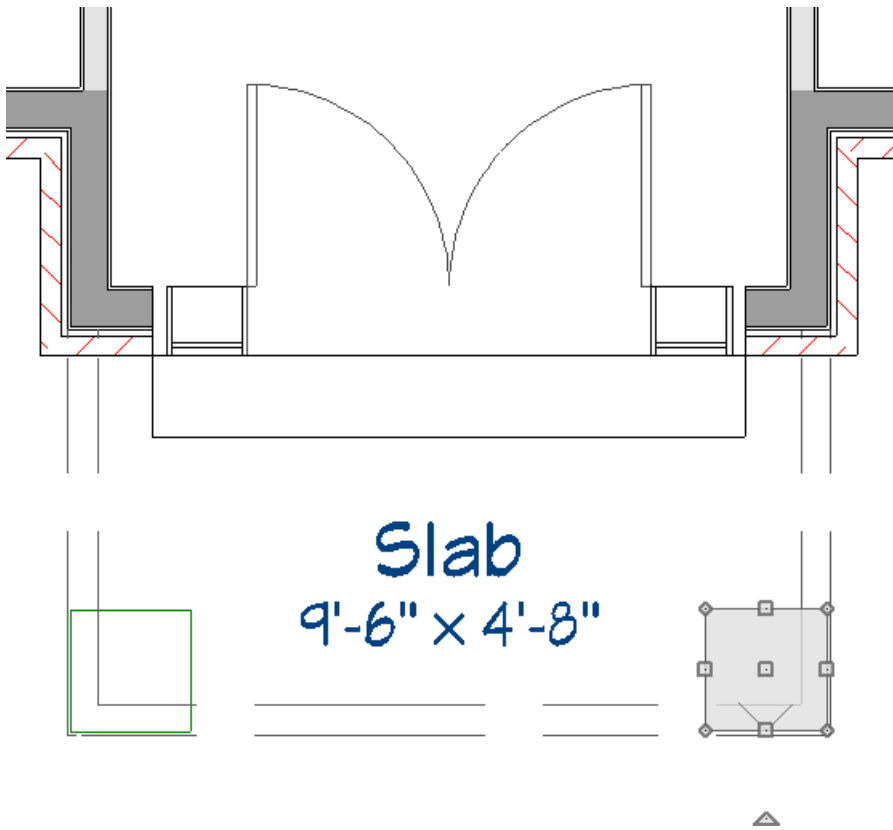
- Specify the desired **Pitch (in 12)** and any other roof characteristics you want.
- Click **OK** to close the dialog and generate a roof.


In Home Designer Pro, check the **Build Roof Planes** box prior to clicking **OK**.

6. The roof can now be supported by columns from the library. If it's not already open, select **View> Library Browser**  from the menu, then type the word "column" in the Search field, or browse to Home Designer Core Catalogs> Architectural> Millwork.

In this example, two Round Columns are used.

7. Click to place columns near the front corners of the stoop area, then select each of them one at a time and move them into position.






- Finally, **Open**  the columns up to specification and increase their **Height** until they meet the roof.

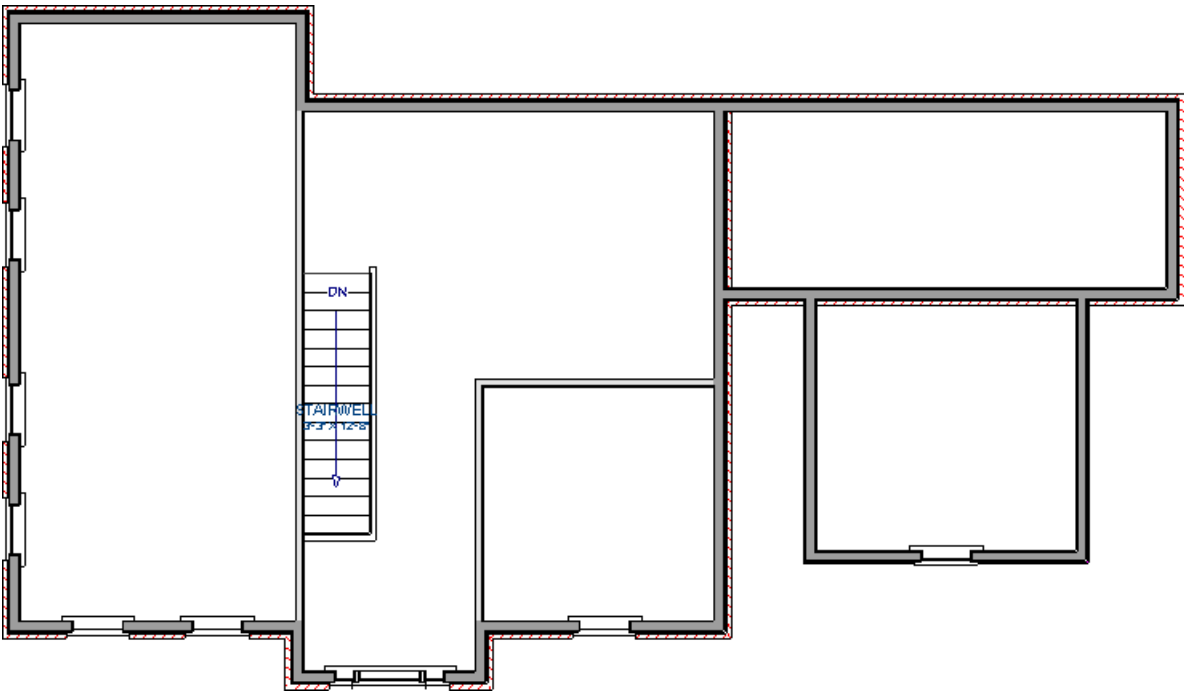
Note: You can also adjust the height of the columns in a 3D camera view.

A different approach to creating a two story space can be applied on the inside of the structure.

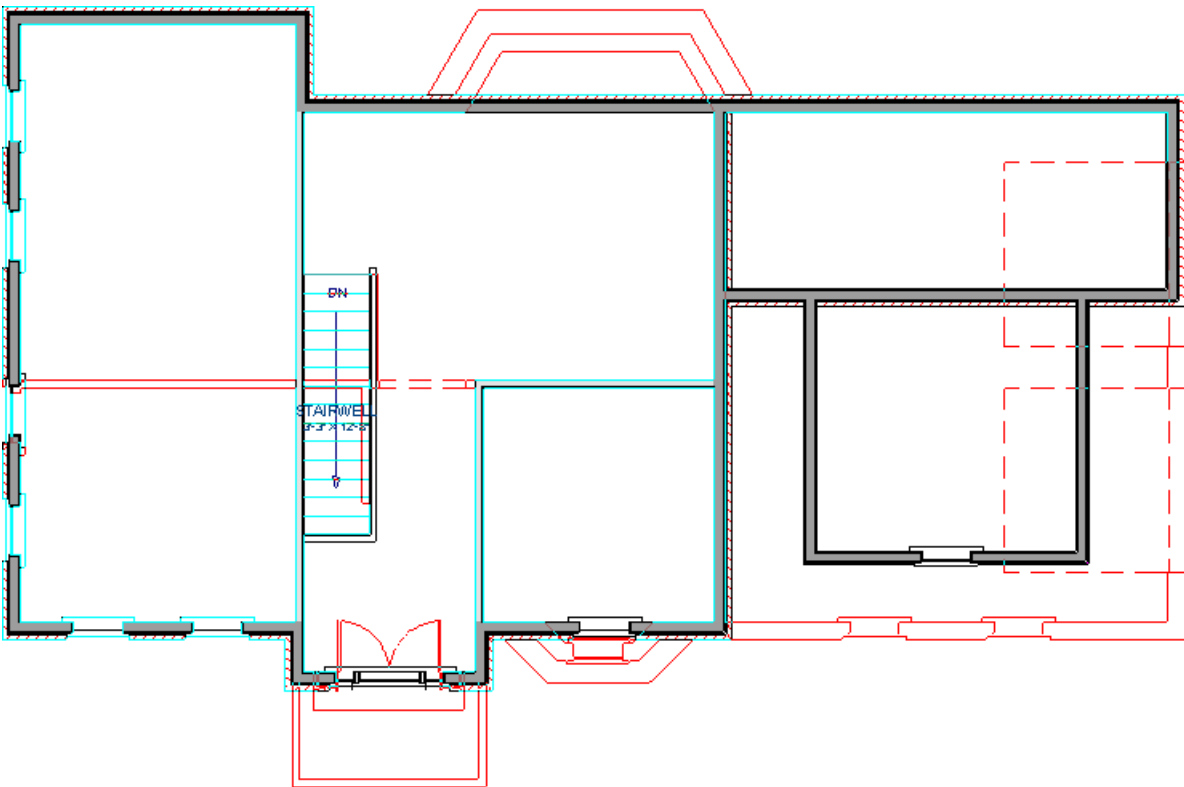
To create a two story foyer


- If an entry staircase is present, click on it using the **Select Objects**  tool to select it, then click the **Auto Stairwell**  edit button.
- Click on the **Up One Floor**  tool to go up to the floor above and notice that a Stairwell room has been created over the stairs.


Note: Stairwell rooms use the "Open Below" room type and do not have floor platforms.





3. Select **Tools> Floor/Reference Display> Reference Floor Display**  from the menu to see the position of the walls that are placed on the floor below.

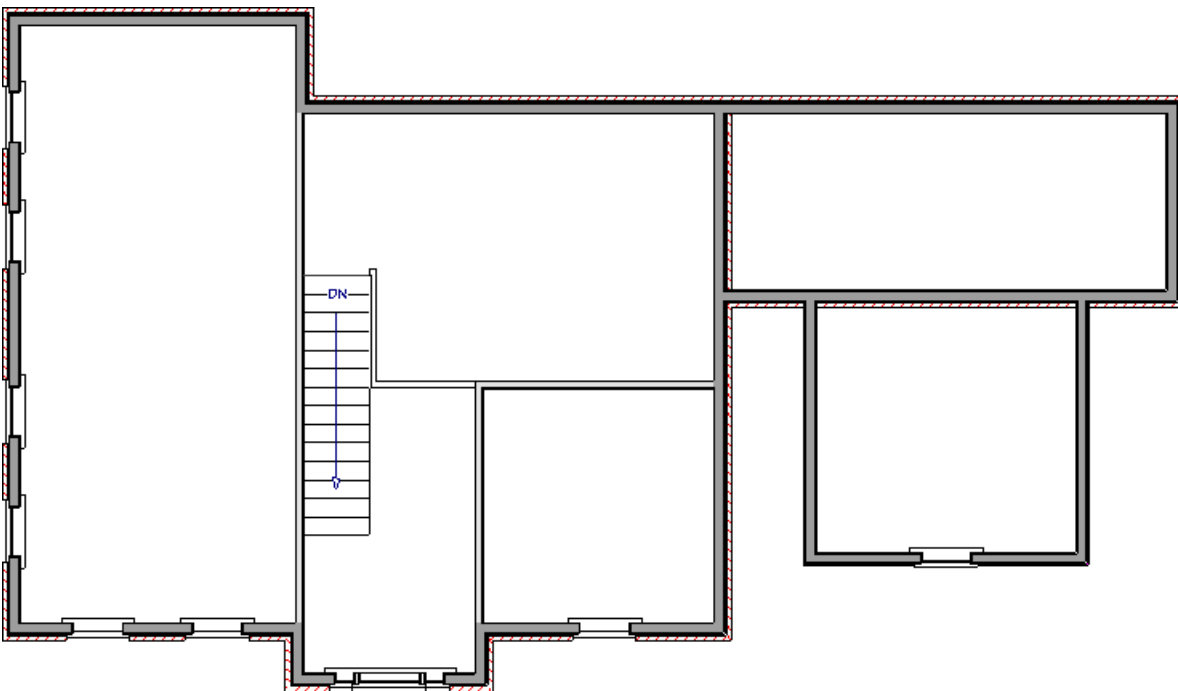




4. Select **Build> Wall> Interior Wall**  from the menu, then click and drag to draw walls to define the upper part of the two-story foyer space.

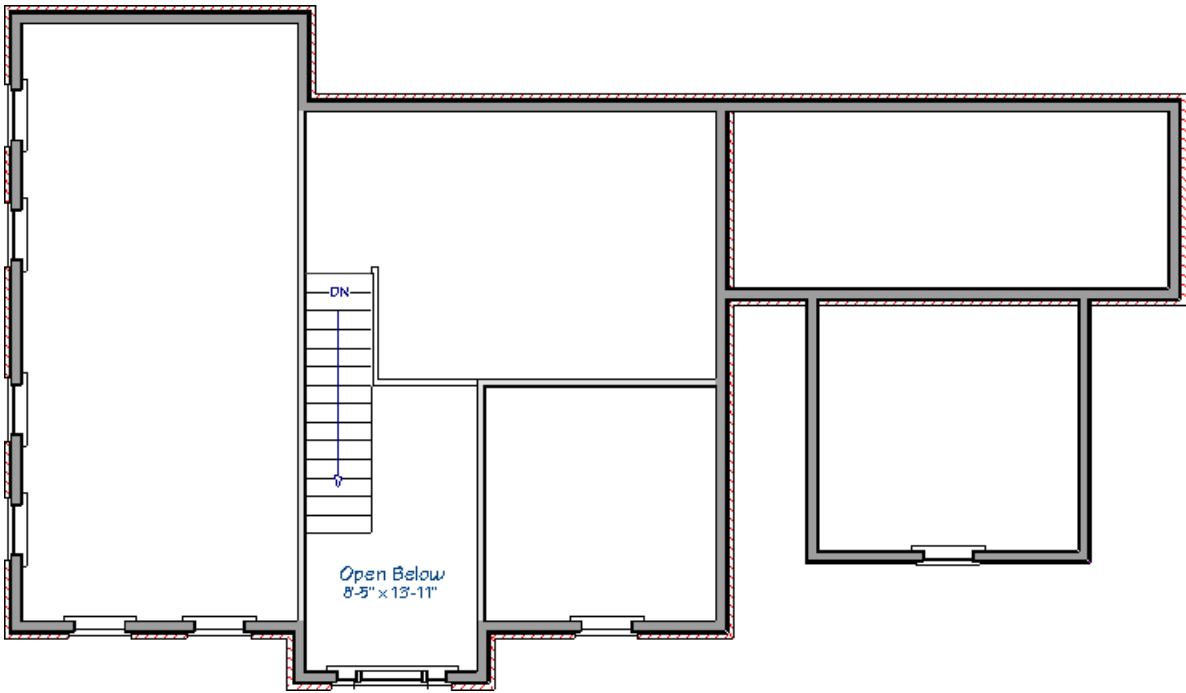
If you would like a balcony, draw one or more of the walls defining the foyer area using **Railings**  instead.

5. Walls or railings drawn over other walls shown in the Reference Display will snap into position and be aligned with the reference walls. To confirm that they are aligned:

- Select each wall or railing on Floor 2 and look for the **Align With Wall Below**  button on the Edit toolbar.
 - If the button is available, click it; if it is not, then the wall or railing is already aligned or is too far from walls/railings on the floor below.
6. When you are finished, you can select **Tools > Floor/Reference Display > Reference Floor Display**  again to turn the Reference Display off.
 7. Select and resize, or delete the railings defining the original Stairwell room, as needed, to define the foyer area to your liking.



8. Using the **Select Objects**  tool, click in the room defining the foyer area to select it and click on the **Open Object**  edit button.
9. On the **GENERAL** panel of the **Room Specification** dialog that displays, select "Open Below" from the **Room Type** drop-down list if it's not already specified, then click **OK**.



10. Finally, create a **Camera**  view of the interior to see the results.