

Restoring a Missing Living Area Label

Reference Number: **KB-00390**

Last Modified: **July 29, 2021**

The information in this article applies to:

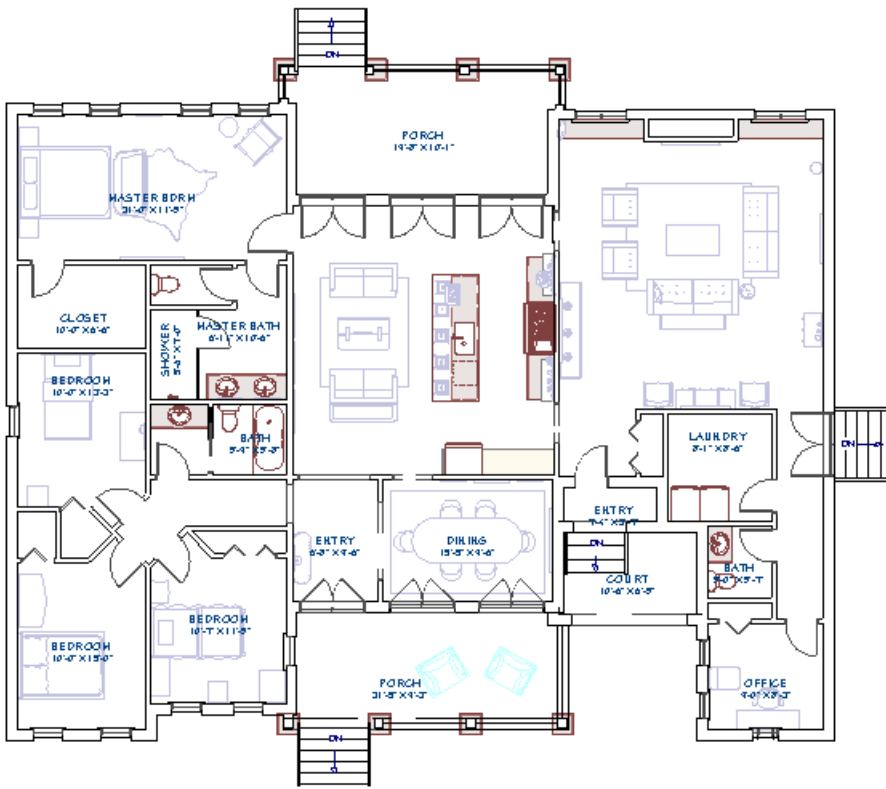


QUESTION

The Living Area label is no longer appearing on my plan. What procedure should I use to make the Living Area reappear?


ANSWER

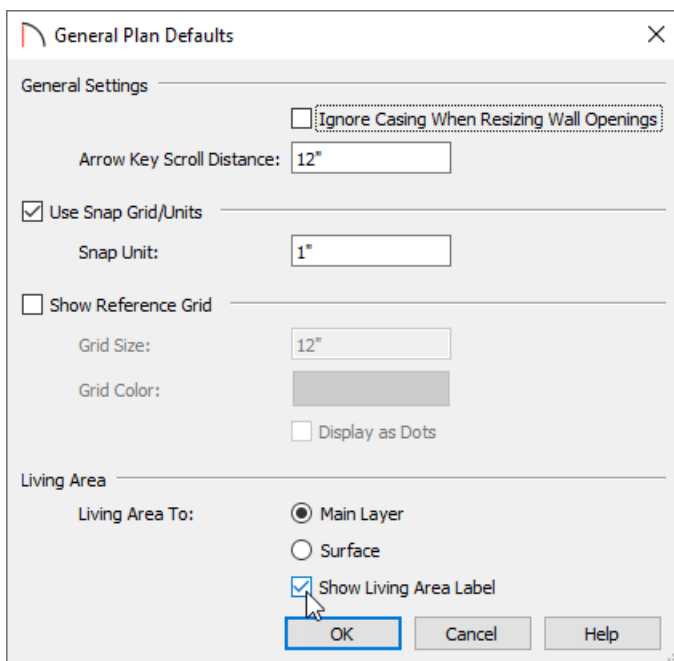
The Living Area label displays the area of the floor platform for living areas in a plan. It is found near the bottom center of the plan as soon as a room area is defined by walls and/or railings.



LIVING AREA 2576 SQ FT





To restore the Living Area label

1. Select **Edit > Default Settings**  from the menu.
2. In the **Default Settings** dialog, select **Plan** from the list, then click **Edit**.
3. In the **General Plan Defaults** dialog that displays, place a check in the box beside **Show Living Area Label**.




4. Click the **OK** and **Done** to confirm the changes and close the dialogs.

If the Living Area label still does not display after enabling the setting above, please try the following:

- Select **Tools> Checks> Plan Check**  from the menu. In the **Plan Check** dialog, click the **Done** button. When the dialog closes, check to see if the Living Area label displays.
- Next, ensure that the "Room Labels" layer is displayed in the **Layer Display Options**  dialog. This is the default layer for the Living Area label.
- In Home Designer Pro if the Living Area label still doesn't appear, click on an exterior wall within a floor plan view, and use one of the resize edit handles at either end of the wall to detach it from one of the other exterior walls that it's connected to. By opening the enclosed room area, the living area calculation will be forced to update. Navigate to **Build> Floor> Rebuild Walls/Floors/Ceilings** . Reconnect the walls to restore the enclosed room area, then navigate to **Build> Floor> Rebuild Walls/Floors/Ceilings**  once again.

Related Articles

 [Calculating the Living Area or Square Footage of a Plan \(/support/article/KB-00309/calculating-the-living-area-or-square-footage-of-a-plan.html\)](/support/article/KB-00309/calculating-the-living-area-or-square-footage-of-a-plan.html)