

# Toggling Off Color in Floor Plan View

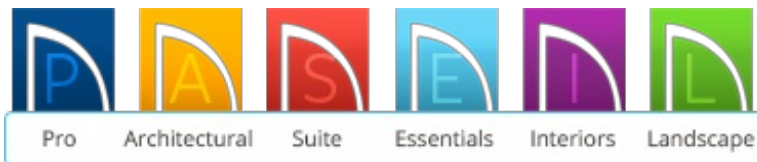
---

Reference Number: **KB-00372**

Last Modified: **July 16, 2015**

---


The information in this article applies to:



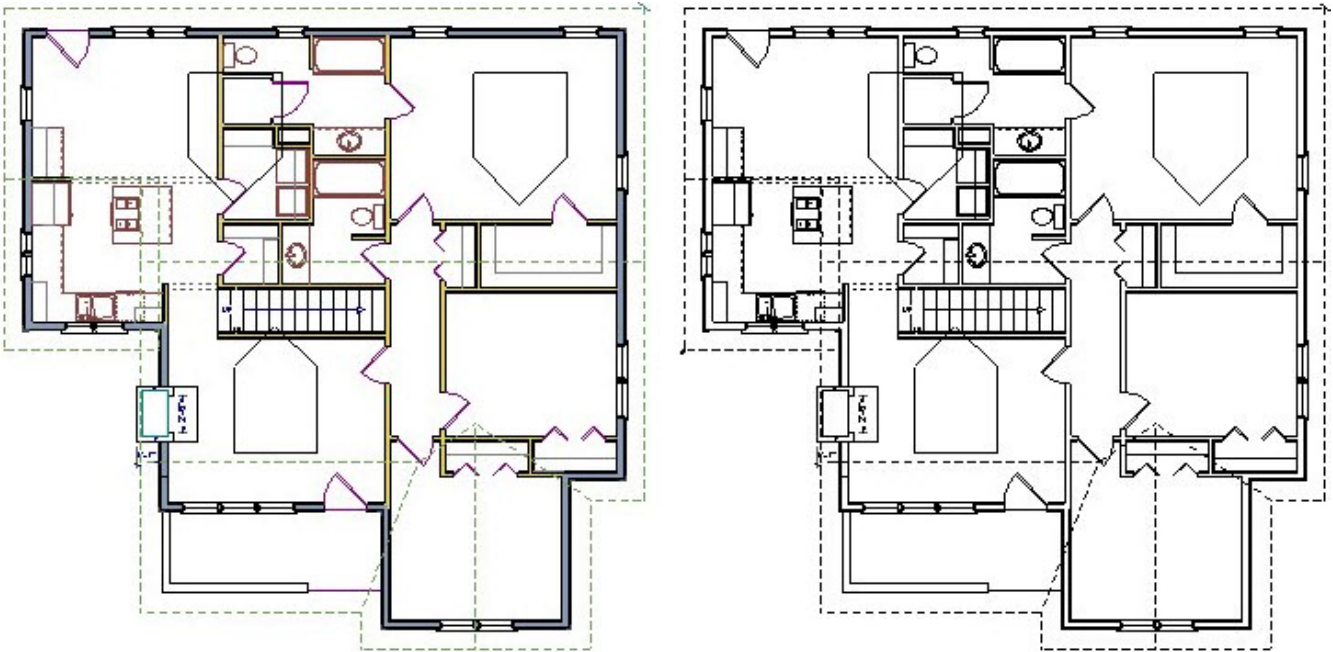
## QUESTION

How do I turn off the color in floor plan view so that my walls and other objects display in black and white?

## ANSWER

The display of color on-screen can be toggled on and off in 3D by selecting **View> Color** .

In Home Designer 2014 and prior versions this tool was found in **Tools> Display Settings> Color On/Off**.



You can also print in color, or gray scale, using the Print dialog. Check the **Print in Color** box to print in color or clear the check box to print in grey scale.

Most black and white printers will print a grey scale approximation of the colors if Print in Color is selected.

[208-292-3400 \(tel:+1-208-292-3400\)](tel:+1-208-292-3400) © 2003–2017 Chief Architect, Inc.

[Terms of Use \(https://www.chiefarchitect.com/company/terms.html\)](https://www.chiefarchitect.com/company/terms.html)

[Privacy Policy \(https://www.chiefarchitect.com/company/privacy.html\)](https://www.chiefarchitect.com/company/privacy.html)