

Changing the Line Colors Used in the 2D Plan View for Objects

Reference Number: **KB-00304**

Last Modified: **July 26, 2016**

The information in this article applies to:



QUESTION

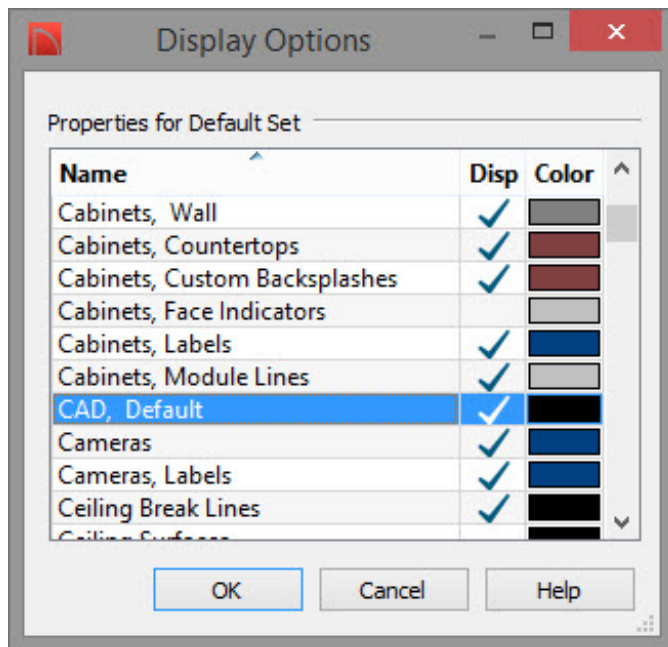
I would like to change the line colors used in plan view for a variety of objects. Some of these include walls, doors, electrical items and dimension lines. How do I make these changes, but only have them apply to one plan I am working on right now?

ANSWER

Home Designer offers the option to change the color used in the Plan view for walls, floors, furniture and other objects. The colors used for objects in a particular plan can be changed at any time. These changes will be retained when the plan is saved, and apply only to the plan that is in use when the changes are made.

To change the colors used for objects in the Plan View

1. From the menu select **Tools> Display Options** .



2. To change the line color of an object, simply select the layer that it is located on. CAD objects, such as lines, splines, rectangular polylines, etc, for example, are located on the **CAD, Default** layer.
3. Once the layer has been selected, you can check or un-check the **Disp** column to control whether or not the objects on this layer will be displayed in the currently active plan view, or change the default line color for these objects.
4. Once you have made the appropriate changes to the layers of your choice, click the **OK** button to return to plan view.