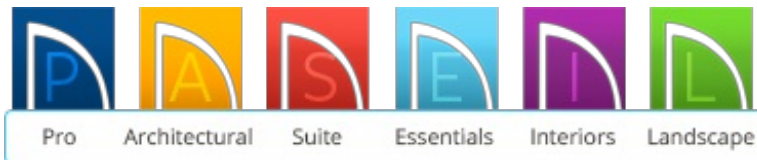


Allowing Windows to Span across Multiple Floors

Reference Number: **KB-00205**

Last Modified: **July 16, 2015**

The information in this article applies to:



QUESTION

I need to be able to span windows across more than one floor, but when I go to adjust them in a 3D camera view, they stop. How can I span windows across more than a single floor?




ANSWER

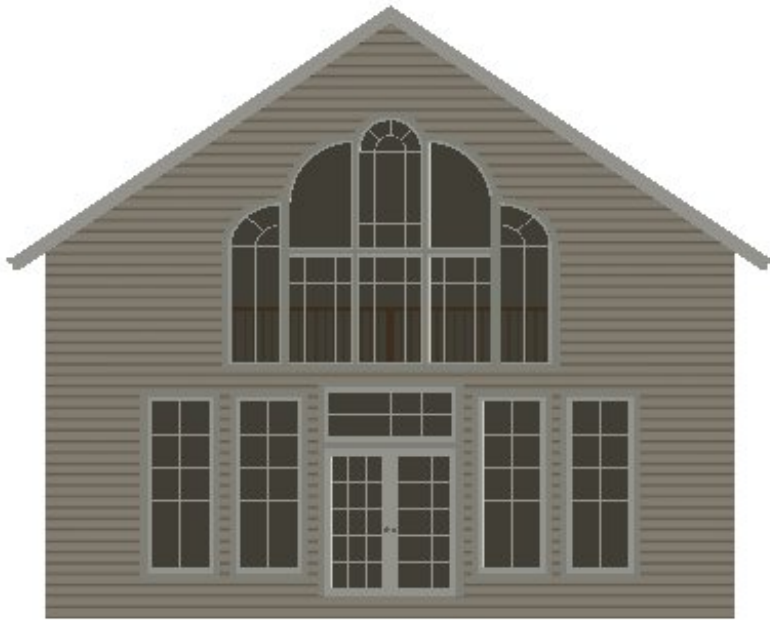
Many objects have restrictions placed on their movement by their own properties or Moving Objects specification settings. Other move restrictions are activated by the Snap Settings. Architectural objects, for example, bump into other 3D objects as they are being moved when Bumping/Pushing* is enabled and CAD-based objects may be set to stop at other CAD objects or at walls.

The ability to turn off the Bumping/Pushing feature independently is only available in the Home Designer Pro and Chief Architect versions of the software.

These restrictions can be overridden when necessary by holding down the Ctrl key while dragging to move an object.

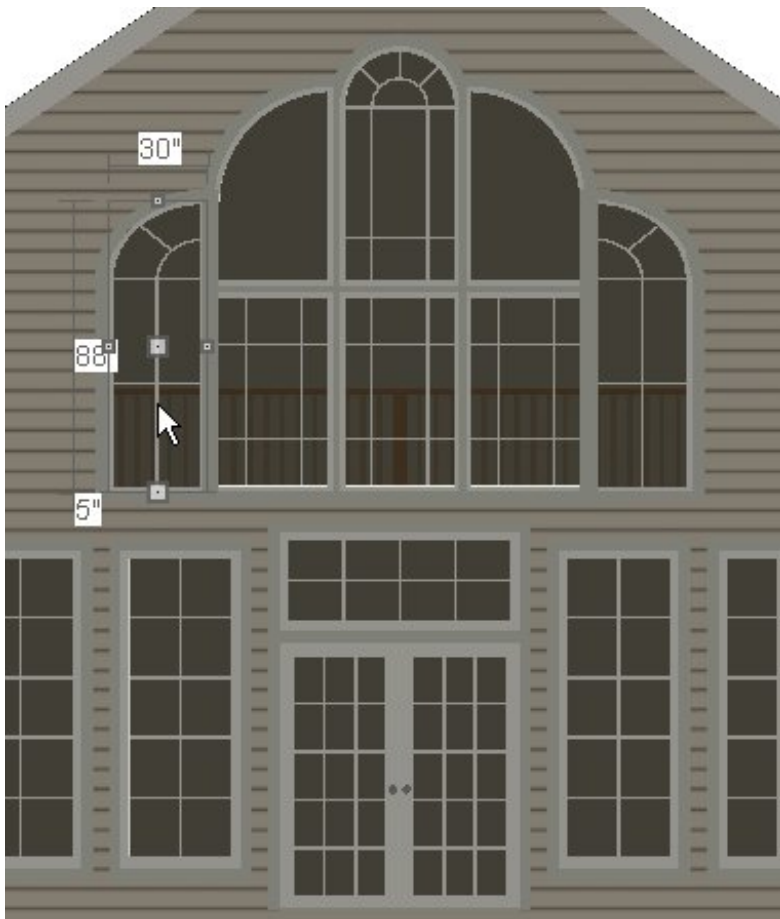
To move an object freely

1. For the purposes of our example, we will take a **Cross Section Elevation**  view of the structure to allow us to more easily adjust the window.



You do not need to use a Cross Section/Elevation view for adjusting 3D views, you could also use a normal **3D Camera**  for this same purpose.

2. Using the **Select Objects**  tool, select the object.



3. Hold down the **Ctrl** key on your keyboard

4. Click the **Move** edit handle and drag it to the new location.

[208-292-3400 \(tel:+1-208-292-3400\)](tel:+1-208-292-3400) © 2003–2017 Chief Architect, Inc.

[Terms of Use \(https://www.chiefarchitect.com/company/terms.html\)](https://www.chiefarchitect.com/company/terms.html)

[Privacy Policy \(https://www.chiefarchitect.com/company/privacy.html\)](https://www.chiefarchitect.com/company/privacy.html)