

Restoring the Size/Position of the Side Windows in Home Designer

Reference Number: **KB-00179**

Last Modified: **January 7, 2022**

The information in this article applies to:





QUESTION

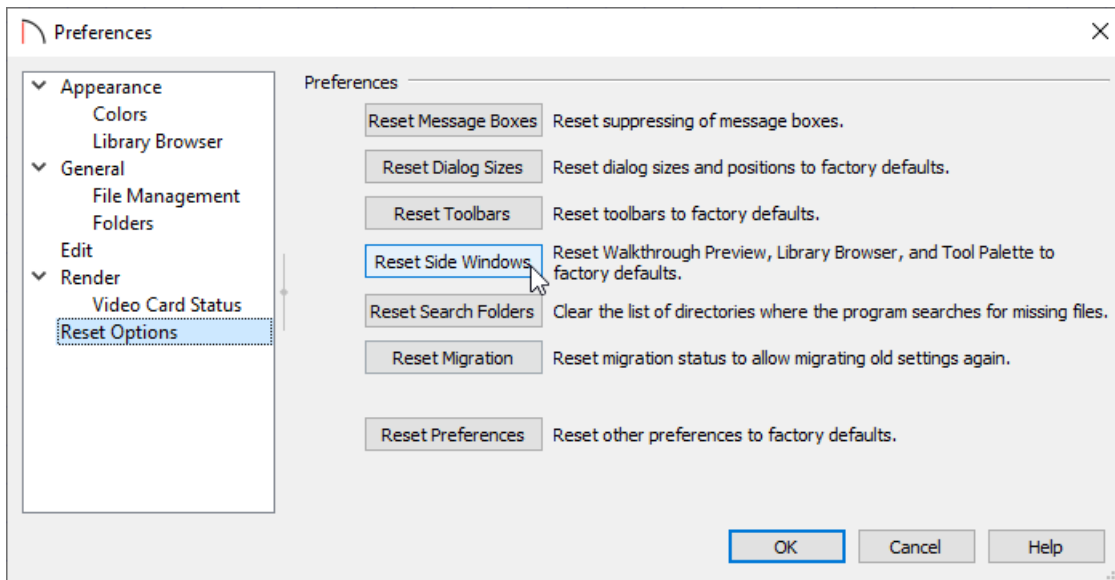
I have moved my Library Browser and Tool Palette onto a secondary monitor which is no longer there or otherwise cannot locate it when I go to activate this tool. How can I reset it to its default position within Home Designer?


ANSWER

Restoring the size and position of any of these side windows in Home Designer is easy using Reset Options within Preferences.

To restore the Side Windows

1. Select **Edit > Preferences**  from the menu if you're on a Windows PC or **Home Designer > Preferences**  if you're on a Mac.
2. On the **RESET OPTIONS** panel of the **Preferences** dialog, click the **Reset Side Windows** button.



3. You will be prompted with a warning that states, "All side windows will be reset to the default size and position when you re-launch the program." Click **OK**.
4. Click **OK** again to close the dialog.
5. **Save**  any work you have open, re-launch the Home Designer software, and notice that the size and position of all of your side windows have been restored.