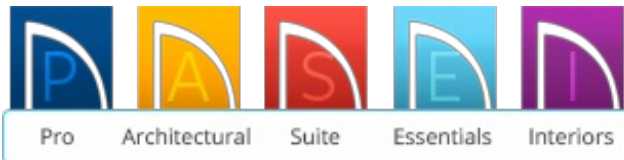


Using the Space Planning Assistant

Reference Number: **KB-00121**

Last Modified: **June 23, 2017**

The information in this article applies to:




QUESTION

How do I use the Space Planning Assistant to plan the layout of a new home?

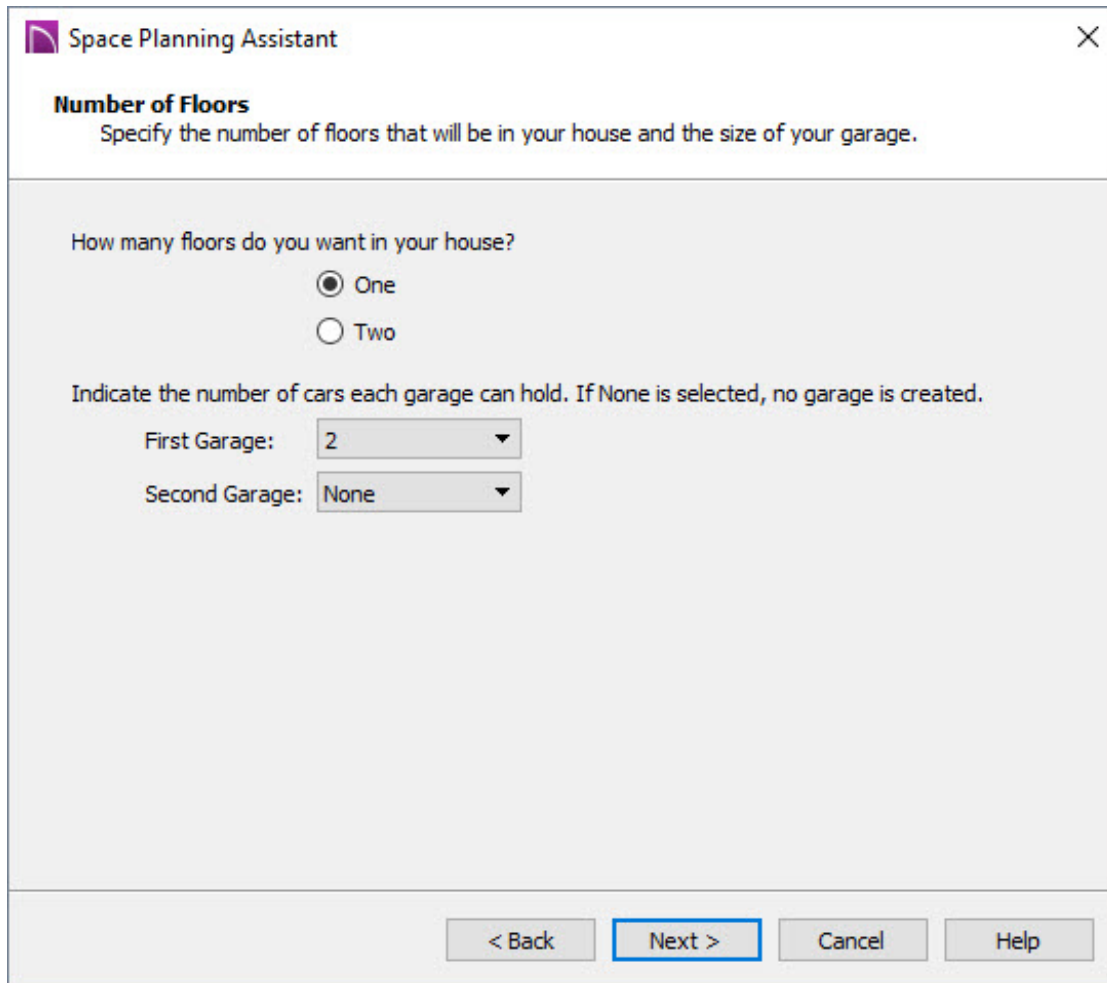
ANSWER

The Space Planning Assistant, or House Wizard in earlier versions, is a feature that offers a convenient way to design a new floor plan by arranging room boxes rather than by drawing walls.

To use the Space Planning Assistant

1. Start with a new plan and select **Tools > Space Planning > Space Planning**  from the menu to open the **Space Planning Assistant**.
2. The Assistant will ask you a number of questions about the home you want to design. As prompted, answer all of the questions, and click **Next** to continue from window to window.

3. Click **Next** to select the Number of Floors that will be in your house, as well as the size of your garage.



The screenshot shows a dialog box titled "Space Planning Assistant" with a close button (X) in the top right corner. The main heading is "Number of Floors" with a subtitle "Specify the number of floors that will be in your house and the size of your garage." Below this, the question "How many floors do you want in your house?" is followed by two radio button options: "One" (which is selected) and "Two". A second instruction reads "Indicate the number of cars each garage can hold. If None is selected, no garage is created." This is followed by two dropdown menus: "First Garage:" with the value "2" and "Second Garage:" with the value "None". At the bottom of the dialog, there are four buttons: "< Back", "Next >" (which is highlighted with a blue border), "Cancel", and "Help".

4. Click the **Next** button again to display the First Floor Main Rooms to set the number of bedrooms and bathrooms that you want. Remove check marks from the type of rooms that you do not want in your design.

Space Planning Assistant ×

First Floor Main Rooms
Indicate the number and kind of rooms that you wish to have on the first floor of your house.

How many bedrooms and baths do you want on Floor 1?

Bedrooms: ▼

Full Bathrooms: ▼

Half Bathrooms: ▼

Select any of the following room types:

- Office/Den
- Formal Dining Room
- Family Room
- Living Room
- Kitchen

5. Remove any check marks from the Misc Rooms that you do not want to display, and select the number of closets.

Space Planning Assistant

First Floor Additional Rooms
Specify closets and additional room types for the first floor of your house.

How many closets do you want on Floor 1?
Closets: 2


Select any of the following room types:

- Front Porch
- Laundry Room
- Entryway
- Hallway

< Back Next > Cancel Help


6. Click **Finish** to close the Space Planning Assistant and room boxes will display on your screen.
7. Arrange the room boxes as desired, and once all of the rooms you need for your home are on the plan, they can be moved and resized as needed.

To move a room

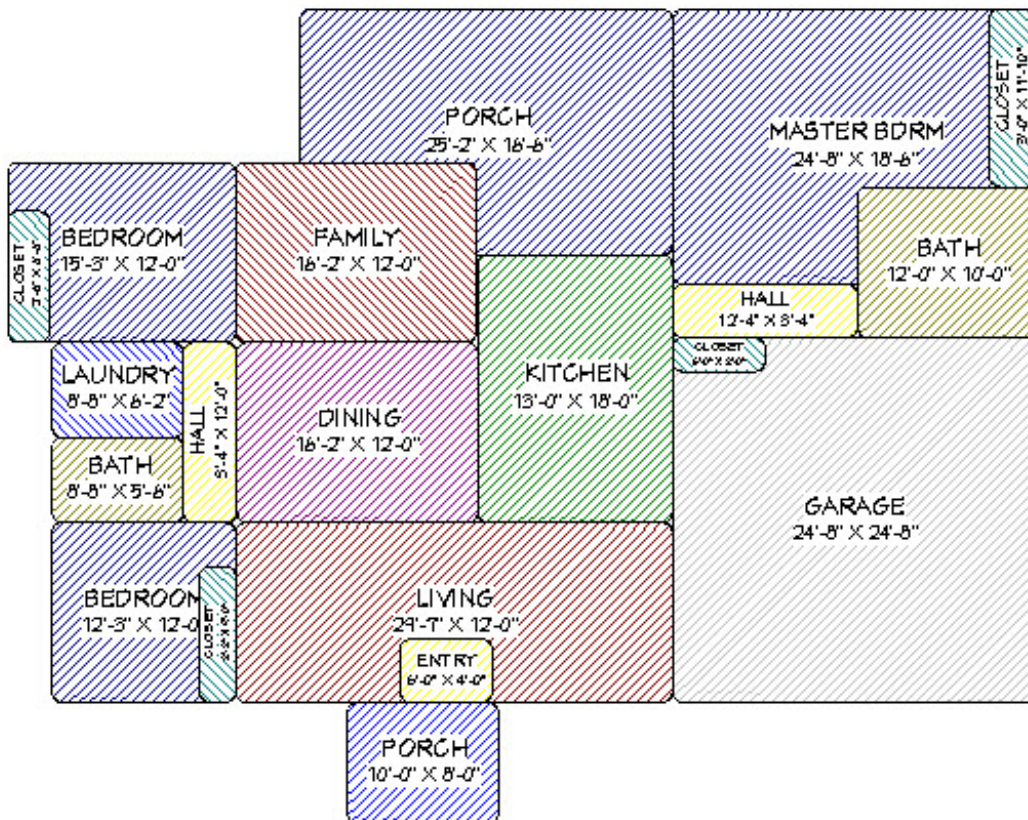
1. Click on a room to select it.
2. Place your pointer over the center, square **Move**  edit handle. When correctly positioned, the mouse pointer will change to a four-headed arrow.
3. Click and drag the room to the desired position and release the button

To resize a room

1. Click on a room to select it.
2. Use the edit handles to resize the rooms as needed.

You can also click on a room to select it and use the **Open Object**  edit tool to open the **Room Box Specification** dialog. Here, you can set specific dimension values, as well as change the room name and several other properties.

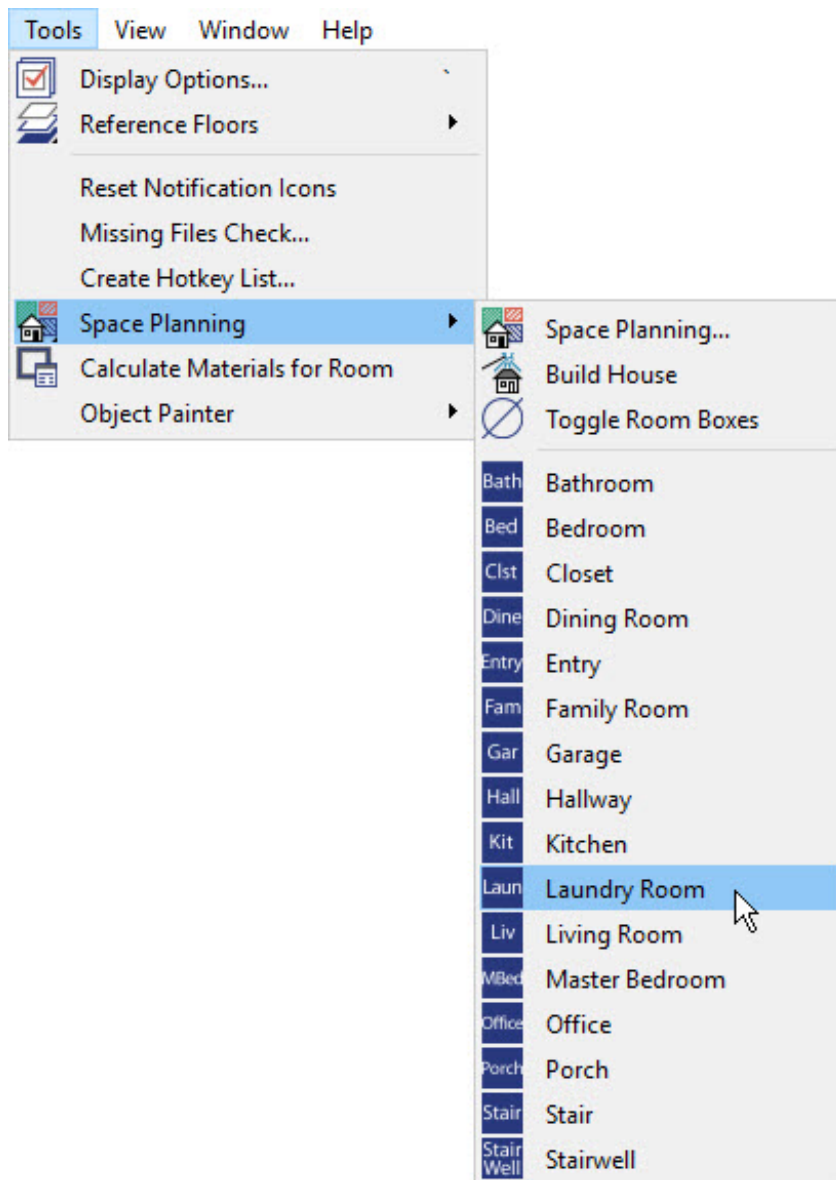
Try and place the rooms so their sides just touch and keep in mind that small gaps or overlaps are OK. Placing a smaller room completely inside of a larger room is also acceptable. If two rooms overlap, the smaller will take its space from the larger.



To generate individual rooms

After using the wizard to create your initial structure, you can add individual room

boxes. Select **Tools> Space Planning** from the menu and click on the type of room you want to add to the plan.




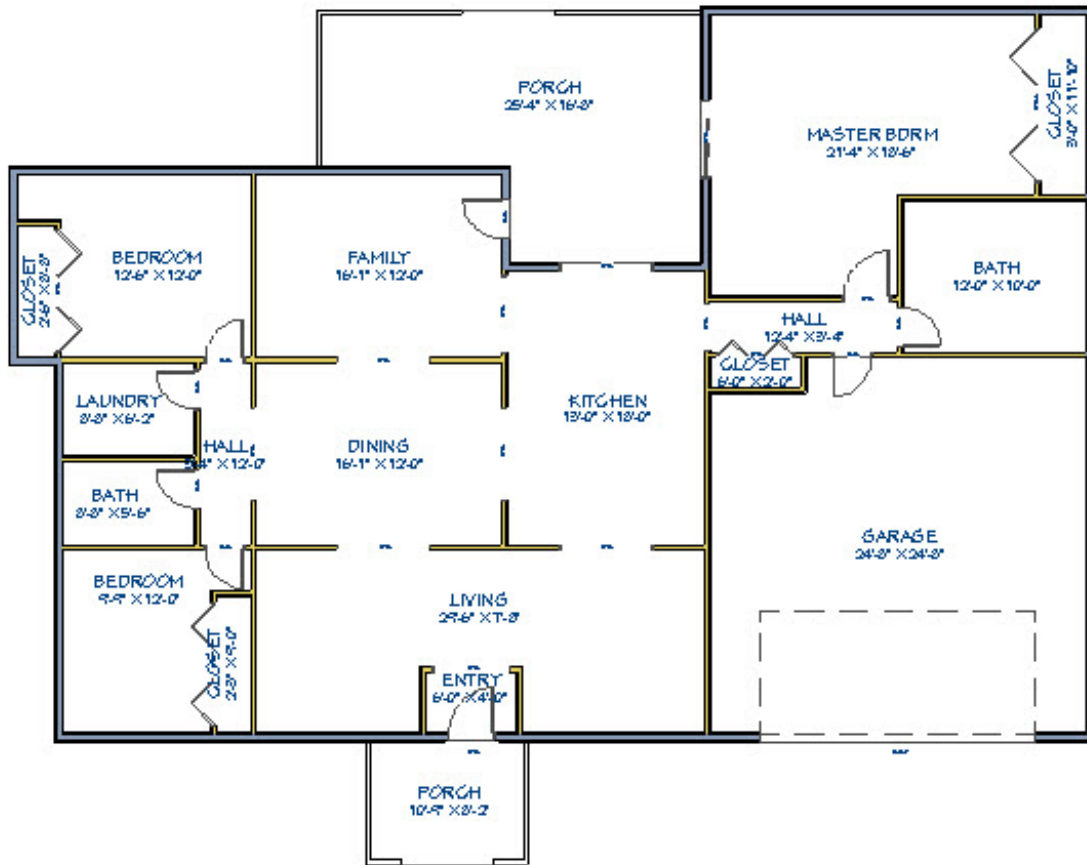
By clicking on the plan, you will be able to create additional rooms of your choice at that location, which can then be moved and resized like the ones created using the wizard.


To delete a room

1. Click once on the room to select it.
2. Press the **Delete** button on your keyboard.

To convert all of the room boxes into a working plan

1. After you have finished arranging and resizing the rooms, select **Tools> Space Planning> Build House**  from the menu to convert the room boxes into fully editable walls and rooms.



2. Repeat this process for any other floors in the plan, as the room boxes on each floor must be converted separately.
3. Finally, take a 3D Camera Dollhouse View to see the results by selecting **3D> Create Perspective View> Doll House View** .



4. You can now return to floor plan view and add or edit objects such as the walls, doors and windows, furniture and appliances, room materials and floor coverings, etc.

[208-292-3400 \(tel:+1-208-292-3400\)](tel:+1-208-292-3400) © 2003–2017 Chief Architect, Inc.

[Terms of Use \(https://www.chiefarchitect.com/company/terms.html\)](https://www.chiefarchitect.com/company/terms.html)

[Privacy Policy \(https://www.chiefarchitect.com/company/privacy.html\)](https://www.chiefarchitect.com/company/privacy.html)